

PROFI CARE®

Supreme quality meets innovative design



Product catalogue 2023



Hair care

**PC-HT 3044****Hair dryer**

1800 watt max.

2 temperature/power settings

Extra-long spiral cable



- > Compact hair dryer with 1800 watt max.
- > Incl. wall mount with safety shutdown for space-saving storage and fast availability
- > Automatic shut-off when attached to base
- > Extra-long spiral cable: space-saving, yet with maximum flexibility in use
- > 2 temperature/power settings
- > Cool Shot
- > Overheating protection
- > Wall mount incl. mounting material
- > Hanging loop
- > 220–240 V, 50/60 Hz, 1600–1800 W



Incl. wall mount with safety shutdown
+ extra-long spiral cable

Art. no.:	Art. EAN:	20" / 40" / HQ container
330 440	4 006 160 304 404	3426 / 7098 / 8322
Colour:	PU:	Device (W x H x D):
White	6	240 x 260 x 100 mm



**PC-HT 3009****Hair dryer**

1400 watt

2 temperature/power settings

Cold setting for style fix



- > Compact hair dryer with 1400 watt
- > Space-saving storage with folding handle
- > 2 temperature/power settings
- > Cold setting for style fix and hairstyle finish
- > Shaping nozzle 360° rotatable (removable)
- > Overheating protection
- > Hanging loop
- > 220–240 V, 50/60 Hz, 1400 W

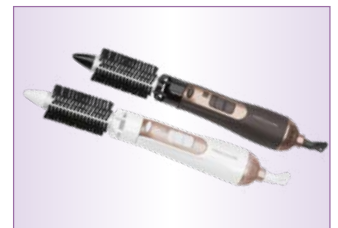


Space-saving storage with folding handle

Fitting accessories
(not included):

PC-HAS 3011
Hot air styler

Art. no.: 330 110 (White/champagne)
Art. no.: 330 111 (Brown/bronze)



Art. no.:	Art. EAN:	20" / 40" / HQ container
330 090	4 006 160 300 901	6774 / 13554 / 16458
Colour: White/ champagne	PU:	Device (W x H x D):
	6	160 x 250 x 70 mm



4 006160 300901



Art. no.:	Art. EAN:	20" / 40" / HQ container
330 091	4 006 160 300 918	6774 / 13554 / 16458
Colour:	PU:	Device (W x H x D):
Brown/Bronze	6	160 x 250 x 70 mm



4 006160 300918





PC-HT 3073	Hair dryer	
1600 watt max.		
Ion technology function		
Soft touch housing		

- > Compact hair dryer with 1600 watt max.
- > Ion technology function – improved possibilities of hairstyling thanks to antistatic effect, the hair is not dried out and becomes sleek and shiny
- > 3 temperature/power settings
- > Cool Shot
- > Space-saving storage with folding handle
- > Transparent, centred shaping nozzle for fast and precise drying – 360° rotatable (removable)
- > Soft touch housing
- > Overheating protection
- > Hanging loop
- > 220–240 V, 50/60 Hz, 1400–1600 W



Space-saving storage with folding handle



Shaping nozzle 360° rotatable (removable)



Fitting accessories (not included):
PC-HC 3072
Hair straightener
 Art. no.: 330 721 (pink)

Art. no.:	Art. EAN:	20" / 40" / HQ container
330 730	4 006 160 307 306	6748 / 14240 / 16748
Colour:	PU:	Device (W x H x D):
Anthracite/Blue	4	200 x 265 x 70 mm



4 006160 307306



Art. no.:	Art. EAN:	20" / 40" / HQ container
330 731	4 006 160 307 313	6748 / 14240 / 16748
Colour:	PU:	Device (W x H x D):
Anthracite/Pink	4	200 x 265 x 70 mm



4 006160 307313





PC-HT 3082	Hair dryer	
1800 watt		
3 temperature/power settings		
Soft touch housing		

- > Modern hair dryer with 1800 watt
- > Ion technology function – improved possibilities of hairstyling thanks to antistatic effect, the hair is not dried out and becomes sleek and shiny
- > Stylish LED lighting
- > 3 temperature/power settings
- > Cool Shot (lockable)
- > Easy Click – shaping nozzle 360° rotatable (magnetic)
- > Soft touch housing
- > High-quality stainless steel insert
- > Air intake filter (removable)
- > Overheating protection
- > Hanging loop
- > 220–240 V, 50/60 Hz, 1800 W



Stylish LED lighting

Easy Click – shaping nozzle
360° rotatable (magnetic)Air intake filter with stainless steel insert
(removable)

Art. no.:	Art. EAN:	20" / 40" / HQ container
330 820	4 006 160 308 204	5800 / 12080 / 14240
Colour:	PU:	Device (W x H x D):
Anthracite/ Blue	4	140 x 260 x 80 mm



4 006160 308204



**PC-HT 3045****Professional hair dryer**

Powerful 2200 watt max.

3 temperature/power settings

Soft touch housing



- > Professional hair dryer with powerful 2200 watt max.
- > 3 temperature/power settings
- > 2 blower stages
- > Cool Shot
- > Shaping nozzle 360° rotatable (removable)
- > Soft touch housing
- > Air intake filter (removable)
- > Incl. 2 spare filters
- > Overheating protection
- > Hanging loop
- > 220–240 V, 50/60 Hz, 1800–2200 W



Shaping nozzle 360° rotatable
(removable)

Art. no.:	Art. EAN:	20" / 40" / HQ container
330 451	4 006 160 304 510	3816 / 7890 / 9264
Colour:	PU:	Device (W x H x D):
Purple/Silver	6	240 x 250 x 90 mm



Art. no.:	Art. EAN:	20" / 40" / HQ container
330 450	4 006 160 304 503	3816 / 7890 / 9264
Colour:	PU:	Device (W x H x D):
Anthracite/Silver	6	240 x 250 x 90 mm



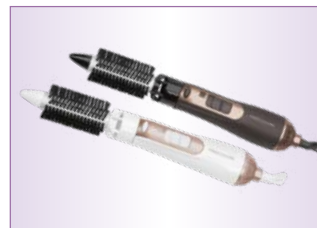
ETM TESTMAGAZIN • URTEIL	
ProfiCare PC-HT 3010	
GUT	85,0 %
Im Test: 14 Haartrockner Testurteile: 1× sehr gut, 12× gut, 1× befriedigend www.etm-testmagazin.de	Heft 11/2018



PC-HT 3010	Professional hair dryer
Powerful 2200 watt max.	
Ion technology function	
3 temperature/power settings	



- > Professional hair dryer with powerful 2200 watt max.
- > Ion technology function – improved possibilities of hairstyling thanks to antistatic effect, the hair is not dried out and becomes sleek and shiny
- > 3 temperature/power settings
- > 2 blower stages
- > Cool Shot
- > Shaping nozzle 360° rotatable (removable)
- > Air intake filter (removable)
- > Overheating protection
- > Hanging loop
- > 220–240 V, 50/60 Hz, 1800–2200 W



Fitting accessories
(not included):

**PC-HAS 3011
Hot air styler**

Art. no.: 330 110 (White/Champagne)
Art. no.: 330 111 (Brown/Bronze)

Art. no.:	Art. EAN:	20" / 40" / HQ container
330 100	4 006 160 301 007	4002 / 8160 / 9600
Colour:	PU:	Device (W x H x D):
White/ Champagne	6	274 x 275 x 94 mm



4 006160 301007



Art. no.:	Art. EAN:	20" / 40" / HQ container
330 101	4 006 160 301 014	4002 / 8160 / 9600
Colour:	PU:	Device (W x H x D):
Brown/Bronze	6	274 x 275 x 94 mm



4 006160 301014





PC-HTD 3113

Professional hair dryer

Powerful 2200 watt

Ion technology function

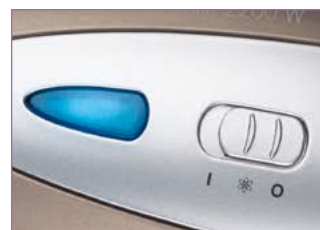
3 temperature/power settings



- > Professional hair dryer with powerful 2200 watt
- > Ion technology function – improved possibilities of hairstyling thanks to antistatic effect, the hair is not dried out and becomes sleek and shiny (switchable)
- > 3 temperature/power settings
- > 2 blower stages
- > Cool Shot
- > Incl. professional volume diffuser and shaping nozzle (360° rotatable and removable)
- > Soft touch housing
- > Air intake filter (removable)
- > Overheating protection
- > Hanging loop
- > 230 V, 50/60 Hz, 2200 W



3 temperature/power settings



Ion technology function (shiftable)

Art. no.:	Art. EAN:	20" / 40" / HQ container
331 131	4 006 160 311 310	3312 / 6620 / 7968
Colour:	PU:	Device (W x H x D):
Brown-metallic	4	220 x 270 x 95 mm



4 006160 311310



Art. no.:	Art. EAN:	20" / 40" / HQ container
331 130	4 006 160 311 303	3312 / 6620 / 7968
Farbe:	VE:	Gerät (B x H x T):
Black-metallic	4	220 x 270 x 95 mm



4 006160 311303



**PC-HT 3046****Professional hair dryer**

Powerful 2200 watt max.

Ion technology function

3 temperature /power settings



- > Professional hair dryer with powerful 2200 watt max.
- > Ion technology function – improved possibilities of hairstyling thanks to antistatic effect, the hair is not dried out and becomes sleek and shiny
- > 3 temperature/power settings
- > 2 blower stages
- > Cool Shot
- > Space-saving storage with folding handle
- > Shaping nozzle 360° rotatable (removable)
- > Soft touch housing
- > Air intake filter (removable)
- > Overheating protection
- > Hanging loop
- > 220–240 V, 50/60 Hz, 1800–2200 W



Space-saving storage with folding handle

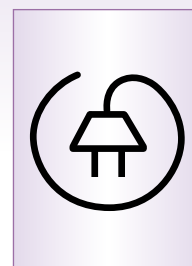
Art. no.:	Art. EAN:	20" / 40" / HQ container
330 460	4 006 160 304 602	3600 / 7638 / 8880
Colour:	PU:	Device (W x H x D):
Black/Titan	4	225 x 280 x 85 mm





PC-HT 3020	Professional hair dryer	
2000 watt max.		
Ion technology function		
Automatic retractable cord		

- > Professional hair dryer with 2000 watt max.
- > Space-saving storage by automatic retractable cord (cord approx. 180 cm) by pressing a button
- > Ion technology function – improved possibilities of hairstyling thanks to antistatic effect, the hair is not dried out and becomes sleek and shiny
- > 3 temperature/power settings
- > 2 blower stages
- > Cool Shot
- > Shaping nozzle 360° rotatable (removable)
- > Soft touch housing
- > Air intake filter (removable)
- > Overheating protection
- > Hanging loop
- > 220–240 V, 50/60 Hz, 1600–2000 W



Automatic retractable cord by pressing a button



Space-saving – push-button retraction of the cord (approx. 180 cm)

Art. no.:	Art. EAN:	20" / 40" / HQ container
330 201	4 006 160 302 011	3906 / 7950 / 9174
Colour:	PU:	Device (W x H x D):
Anthracite/Blue	6	220 x 220 x 95 mm




4 006160 302011





AC professional motor



PC-HT 3017	Professional hair dryer	
Powerful 2200 watt max.		
Ion technology function		
AC professional motor		

- > AC professional hair dryer with powerful 2200 watt max.
- > Powerful AC professional motor, also for salon requirements: up to 70% longer lifespan, especially strong airflow for fast and effective drying, also for long drying times
- > Ion technology function – improved possibilities of hairstyling thanks to antistatic effect, the hair is not dried out and becomes sleek and shiny
- > 3 temperature/power settings
- > 2 blower stages
- > Great freedom of movement due to an extra-long cord (approx. 2m)
- > Cool Shot
- > Extra narrow shaping nozzle for precise styling (360° rotatable and removable)
- > Air intake filter (removable)
- > Soft touch housing
- > Overheating protection
- > Hanging loop
- > 220–240 V, 50/60 Hz, 1800–2200 W



Art. no.:	Art. EAN:	20" / 40" / HQ container
330 170	4 006 160 301 700	3628 / 7388 / 8684
Colour:	PU:	Device (W x H x D):
Black	4	240 x 265 x 90 mm





Inkl. professional
volume diffuser



PC-HTD 3030	Professional hair dryer	 
Powerful 2200 watt max.		
Ion technology function		
Sensor touch operation		

- > Professional hair dryer with powerful 2200 watt max.
- > Sensor touch operation – intelligent hair drying by touch sensor. The hair dryer is switched off automatically when placed out of hand.
- > Ion technology function – improved possibilities of hairstyling thanks to antistatic effect, the hair is not dried out and becomes sleek and shiny
- > 3 temperature/power settings
- > 2 blower stages
- > Cool Shot
- > LED indicator light
- > Incl. professional volume diffuser
- > Shaping nozzle 360° rotatable (removable)
- > Rubberized pads for non-slip storage
- > Air intake filter (removable)
- > Overheating protection
- > Hanging loop
- > 220–240 V, 50 Hz, 1800–2200 W



Sensor touch operation – Intelligent hair drying by touch sensor. The hair dryer is switched off automatically when placed out of hand.

Art. no.:	Art. EAN:	20" / 40" / HQ container
330 300	4 006 160 303 001	3352 / 6820 / 8000
Colour:	PU:	Device (W x H x D):
blue	4	210 x 280 x 90 mm





PC-HAS 3011	Hot air styler
2 temperature/power settings	
Cold setting for style fix	
800 watt	



- > Hot air styler for even and gentle heat distribution
- > 2 exchangeable brush attachments (individual for all hair lengths and requirements) for gentle hair styling:
 - 1 round brush with coarse bristles (Ø approx. 25 mm)
 - 1 round brush with smooth bristles (Ø approx. 35 mm)
- > 2 temperature/power settings
- > Cold setting for style fix and hairstyle finish
- > Ergonomically shaped handle
- > Cable feed via 360° rotatable joint
- > Overheating protection
- > Hanging loop
- > 220–240 V, 50/60 Hz, 800 W



1 round brush (Ø approx. 35 mm)



1 round brush (Ø approx. 25 mm)



Fitting accessories
(not included):

PC-HT 3010 Professional hair dryer

Art. no.: 330 100 (White/Champagne)
Art. no.: 330 101 (Brown/Bronze)

Art. no.:	Art. EAN:	20" / 40" / HQ container
330 110	4 006 160 301 106	7740 / 15480 / 18822
Colour:	PU:	Device (W x H x D):
White/ Champagne	6	260 x 60 x 60 mm



4 006160 301106



Art. no.:	Art. EAN:	20" / 40" / HQ container
330 111	4 006 160 301 113	7740 / 15480 / 18822
Colour:	PU:	Device (W x H x D):
Brown/Bronze	6	260 x 60 x 60 mm



4 006160 301113



**PC-HC 3049****Conical curling iron**

Ion technology function by additional tourmaline coating

Ideal for fashionable hairstyles e.g. corkscrew curls

Heat-insulated tip



- > Conically shaped curling iron (Ø 13 to 25 mm) for variable curl sizes
- > Ion technology function by additional tourmaline coating – improved possibilities of hairstyling thanks to antistatic effect, the hair is not dried out and becomes sleek and shiny
- > Flexibility – can also be used on coloured hair or with styling products
- > For equal, gentle distribution of heat
- > Quick to heat up
- > Heat-insulated tip
- > Integrated feet
- > Heat-proof cable
- > Cable feed via 360° rotatable joint
- > Handy design
- > On/off switch
- > Indicator light
- > 220–240 V, 50/60 Hz, 25 W



Conically shaped curling iron
(Ø 13 to 25 mm) for variable curl sizes



Ideal for fashionable hairstyles
e.g. corkscrew curls

Art. no.:	Art. EAN:	20" / 40" / HQ container
330 490	4 006 160 304 909	15420 / 31950 / 37278
Colour:	PU:	Device (W x H x D):
White/Gold	6	38 x 40 x 350 mm



**PC-GB 3021****Straightening brush**

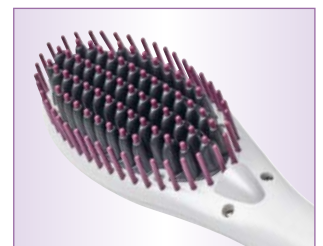
Electric hair/straightening brush with „superglide“ ceramic bristles

Ion technology function

Electronic switch



- > Electric hair/straightening brush with „superglide“ ceramic bristles, suitable for all hair types
- > Styles hair during brushing
- > Ion technology function – improved possibilities of hairstyling thanks to antistatic effect, the hair is not dried out and becomes sleek and shiny
- > Short heating period
- > Electronic switch
- > On/off switch
- > LED indicator light
- > Handy design
- > Heat-resistant cable
- > Cable feed via 360° rotatable joint
- > Hanging loop
- > 110–240 V, 50/60 Hz, 35–37 W



„Superglide“ ceramic bristles

Art. no.:	Art. EAN:	20" / 40" / HQ container
330 210	4 006 160 302 103	12498 / 25890 / 30354
Colour:	PU:	Device (W x H x D):
Nacre	6	260 x 45 x 65 mm





PC-LW 3028	Curler Set
Incl. 20 curlers in 3 different sizes	
Ion technology function by tourmaline coating	
Short heating period	



Ion technology function –
long-lasting, perfect,
voluminous curls

- > Heatable curler set for long-lasting voluminous curls
- > Ion technology function by additional tourmaline coating – perfect curls thanks to antistatic effect, the hair is not dried out and becomes sleek and shiny
- > 20 curlers / 3 different curler sizes:
 - 6x small for close curls (approx. Ø 19 mm)
 - 6x medium for waves and soft curls (approx. Ø 25 mm)
 - 8x large for maximum volume (approx. Ø 32 mm)
- > Incl. metal clips for easy fixing of the rollers
- > Accessory compartment for metal clips
- > Overheating protection
- > Transparent lid
- > Short heating period
- > On/off switch
- > LED indicator light
- > 220–240 V, 50/60 Hz, 350 W



small
Ø approx.
19 mm

medium
Ø approx.
25 mm

large
Ø approx.
32 mm



20 curlers / 3 different curler sizes

Art. no.:	Art. EAN:	20" / 40" / HQ container
330 280	4 006 160 302 806	3081 / 6405 / 7524
Colour:	PU:	Device (W x H x D):
White / Bordeaux	3	320 x 125 x 165 mm



3 in
1



PC-HTH 3003 Hair dryer hood

3 in 1 – Hair dryer hood, hair dryer and curling brush

Ion technology function

Incl. practical storage bag



- > Hair dryer hood with 400 watt
- > 2 temperature/power settings
- > Cold setting for style fix and hairstyle finish
- > Ion technology function – improved possibilities of hairstyling thanks to antistatic effect, the hair is not dried out and becomes sleek and shiny
- > 2 exchangeable attachments for gentle styling:
 - 1 forming brush
 - 1 round brush individual for all hair lengths and requirements with coarse bristles (Ø approx. 18 mm)
- > Ergonomically shaped handle
- > 1.8 m cable for optimal freedom of movement
- > Overheating protection
- > Practical storage bag (e. g. when travelling)
- > Hanging loop
- > 220–240 V, 50 Hz, 400 W



Also suitable as a hair dryer



Also suitable as a curling brush



Practical storage bag (e. g. when travelling)

Art. no.:	Art. EAN:	20" / 40" / HQ container
330 030	4 006 160 300 307	7800 / 16200 / 19040
Colour:	PU:	Device (W x H x D):
White	4	200 x 57 x 57 mm



4 006 160 300 307





Body care



CHEST / BICEPS



Ball shape for large muscle groups such as chest, biceps etc.

NECK / NECK MUSCLES



U-shape for e.g. neck and neck muscles

DEEP-SEATED MUSCLE GROUPS

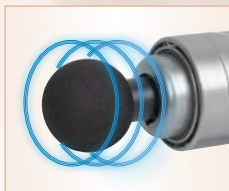


T-shape for e.g. all deep-seated muscle groups

FASCIA / TRIGGER



Conical shape for e.g. fascia, deep tissue and trigger points



Powerful and deep penetrating percussion massage with 1900/2500/2800 strokes/min.



8 LED's for information regarding operating status



Incl. practical storage bag



PC-MP 3087	Electric massage gun
Ideal for athletes	
High-performance lithium ion battery (2000 mAh)	
4 interchangeable attachments	



- > Powerful and deep penetrating percussion massage with 1900/2500/2800 strokes/min.
- > Electric massage gun for a deep vibration massage with 4 interchangeable attachments:
 - Ball shape for large muscle groups such as chest, biceps etc.
 - U-shape for e.g. neck and neck muscles
 - T-shape for e.g. all deep-seated muscle groups
 - Conical shape for e.g. fascia, deep tissue and trigger points
- > Individual and effective treatment of all muscle groups*):
 - Release of tensions
 - Reduction of painful muscle hardening
 - Promotion of blood circulation
 - Increase of mobility
 - Loosening of connective tissue/fascia
 - Loosening of scar tissue

- Promotion of the lymphatic circulation
- Promotion of muscle regeneration e.g. after workout
- Reduction of inflammatory reactions
- > 3 intensity levels with different speeds (1900/2500/2800 strokes/min.)
- > 8 LED's for information regarding operating status
- > High-performance lithium ion battery (2000 mAh)
- > Battery running time up to 4 hours
- > Battery charging time approx. 3 hours
- > Practical storage bag
- > 100–240 V, 50/60 Hz, 12,6 V / rechargeable battery (Li-Ion): 2000 mAh
(Rechargeable battery: 1x lithium-ion, 141.30 g)

*) Not a replacement for medical/professional treatment. Can positively influence your recovery with regard to the points mentioned. In case of doubt, discontinue your treatment and consult your doctor immediately.

Art. no.:	Art. EAN:	20" / 40" / HQ container
330 867	4 006 160 308 679	2424 / 4800 / 5600
Colour:	PU:	Device (W x H x D):
Silver	2	180 x 210 x 63 mm

Only for power supply:



4 006160 308679



2 exchangeable rollers
(coarse and fine)



PC-PHE 3092	Pedicure callus remover	
2 exchangeable rollers (coarse and fine)		
Simple click system		
Ergonomically shaped handle		

- > Special coating of the rollers for effective callus removal; removes callus, but does not hurt the normal skin layer
- > Splash-proof housing (IPX 4) (easy cleaning)
- > 2 exchangeable rollers (coarse and fine) in different colors (hygienic use for several persons)
- > Quick change by simple click system
- > The grinding insert rotates by 360°, approx. 35 times per second
- > Ergonomically shaped handle
- > More gentle, faster, more effective, and safer than metal scrapers or files
- > Removes and smoothes dry, rough, and horny skin on feet, hands, elbows, etc.
- > Reaches even difficult to access places
- > Device head removable for easy cleaning
- > Also suitable for diabetics after consultation with a general practitioner
- > Incl. cleaning brush
- > Battery operation: 2x 1.5 V (UM3/AA/LR6) (batteries not included)



Art. no.: 330 920	Art. EAN: 4 006 160 309 201	20" / 40" / HQ container 14280 / 31560 / 37020
Colour: White / champagne	PU: 6	Device (W x H x D): 60 x 155 x 35 mm

The following accessories are available:
Accessory set PC-PHE 3092 + PHE 5670
2er blister replacement rolls (grey + blue)
 Art. no.: 599 984 | EAN: 4 015 067 999 842





6 attachments



PC-MPS 3016	Manicure/Pedicure Set
Right/left rotation	
4-step switch	
6 high-quality attachments	



Incl. light for precise, controlled operation



- > Practical device for cosmetic hand and foot care in attractive storage box
- > 6 different attachments: 1 polishing disk, 2 nail file disks (coarse/fine), 1 large grinding cone (round), 1 small grinding cone, 1 small grinding cylinder
- > 4-step switch (L1 / L2 / R1 / R2)
- > Right/left rotation for comfortable operation
- > Ergonomically shaped handle
- > Incl. light for precise, controlled operation
- > Battery operation: 2x 1.5 V AA/LR6 (batteries not included)



Small grinding cone



Small grinding cylinder



Large grinding cone (round)



Nail file disk (fine)



Nail file disk (coarse)



Polishing disk

Art. no.: 330 160	Art. EAN: 4 006 160 301 601	20" / 40" / HQ container 20840 / 43160 / 47540
Colour: White / champagne	PU: 10	Device (W x H x D): 180 x 47 x 100 mm





7 attachments

2.000–5.000
U/Min.



Mains operation with
powerful gearbox



Incl. extra-long
spiral cord

Incl. storage bag



PC-MPS 3004	Manicure/Pedicure Set
Electronic speed regulation (5 levels)	
Clockwise/counterclockwise rotation	
Mains operation with powerful gearbox	



- > Practical device for cosmetic hand and foot care
- > 7 different attachments: 1 polishing attachment, 2 nail file disks (coarse/fine), 2 large grinding cones (round/flat), 1 small grinding cone, 1 small grinding cylinder
- > Extra-long spiral cord: space-saving, yet with maximum flexibility in use
- > Electronic speed regulation (5 levels)
- > Clockwise/counterclockwise rotation for comfortable operation
- > Mains operation with powerful gearbox (approx. 2,000–5,000 rpm)
- > Soft touch button
- > Incl. light for precise, controlled operation
- > Practical storage bag
- > Power supply: Input: 100–240 V, 50/60 Hz; 0.3 A; Output: 30 V, 250 mAh



Small grinding
cone



Small grinding
cylinder



Large grinding
cone (flat)



Large grinding
cone (round)



Nail file disk
(fine)



Nail file disk
(coarse)



Polishing
attachment



Incl. light for precise,
controlled operation

Art. no.: 330 040	Art. EAN: 4 006 160 300 406	20" / 40" / HQ container 10000 / 21800 / 26280
Colour: White/ champagne	PU: 4	Device (W x H x D): 37 x 160 x 38 mm



Only for
power supply:



4 attachments

Li ION
TECHNOLOGY



PC-PR 3025 Blackhead remover / pore cleaner

Effective removal of blackheads, comedones, or pimples

5 power settings

Accumulator-operated

- > Pore cleaner for effective removal of blackheads, comedones, or pimples
- > Accumulator-operated
- > Long-life lithium ion battery
- > Incl. 17 exchangeable hygienic small sponges
- > Incl. 4 exchangeable attachments for various applications:
 - Gentle exfoliation removes bumps and skin flakes
 - Reduces visible, large pores and helps remove impurities and blackheads
 - Cleans the pores
 - The skin on the face becomes smoother, tighter and firmer
- > 5 adjustable power settings for all skin types/intensities
- > Gentle on all skin types
- > Easy battery charging via USB connection
- > Accessories: USB charging cable/power adapter
- > Power supply (power supply unit): 100–240 V, 50 Hz, 5 W;
rechargeable battery (Li-Ion): 500 mAh
(Rechargeable battery: 1x lithium-ion, 11.38 g)

Incl. 4 replaceable attachments



Gentle exfoliation
removes bumps
and skin flakes



Reduces visible,
large pores and
helps remove
impurities and
blackheads



Cleans the pores



The skin on the
face becomes
smoother, tighter
and firmer

Art. no.:	Art. EAN:	20" / 40" / HQ container
330 250	4 006 160 302 509	16800 / 34800 / 40800
Colour:	PU:	Device (W x H x D):
Chrom	6	45 x 200 x 45 mm



Only for
power supply:



2 attachments



PC-GRB 3081 Facial cleaning brush

For daily facial care

2 speed levels

Thorough deep cleansing – prevents tired complexion

- > 2 brush heads for versatile use in daily facial care:
 - “Basic Touch” brush – 14,000 soft bristles for perfect and gentle cleaning that is up to ten times more effective than manual techniques
 - “Deep Clean” brush – deep pore cleaning/peeling thanks to the innovative silicone nubs for thorough deep cleansing
- > 2 speed levels
- > Small and handy (also ideal for traveling)
- > Ergonomically shaped handle with soft touch switch
- > Splash-proof housing (IPX4)
- > Gentle – suitable for all skin types
- > Accessories: 2x covering cap
- > Battery operation: 2x 1.5 V AA (batteries not included)



“Basic Touch” brush –
perfect and gentle
cleaning



“Deep Clean” brush – deep
pore cleaning/peeling
thanks to the innovative
silicone nubs

Art. no.:	Art. EAN:	20" / 40" / HQ container
330 810	4 006 160 308 105	14400 / 31590 / 37050
Colour:	PU:	Device (W x H x D):
White	6	47 x 147 x 50 mm



3ⁱⁿ
1

Epilator



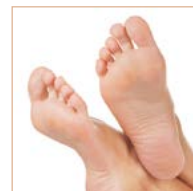
Lady shaver



Callus remover

PC-LBS 3002	Lady Beauty Set	
3 in 1 – Epilator, lady shaver and callus remover		
Accumulator-operated		
Storage bag		

- > 3 in 1 – Epilator, lady shaver and callus remover in one
- > 2-level switches
- > Accumulator-operated
- > Easy handling
- > Epilator with uniform rotation for easy epilation of fine hairs that are very close to the skin
- > Lady shaver for a thorough and smooth shave of legs or sensitive parts of the body such as underarms or bikini line
- > Callus remover for effective callus removal, does not damage the normal skin layer
- > Small and handy (ideal also for traveling)
- > LED charging indicator
- > Ergonomically shaped handle
- > Accessories: cleaning brush, power supply unit, storage bag
- > Power supply (power supply unit): 100–240 V, 50/60 Hz; rechargeable battery (NiMh): 2x 600 mAh
(Rechargeable battery: 1x nickel metal hydride, 24.33 g)



Art. no.:	Art. EAN:	20" / 40" / HQ container
330 020	4 006 160 300 208	12534 / 25698 / 30444
Colour: White/ champagne	PU:	Device (W x H x D):
	6	55 x 140 x 40 mm



4 006160 300208

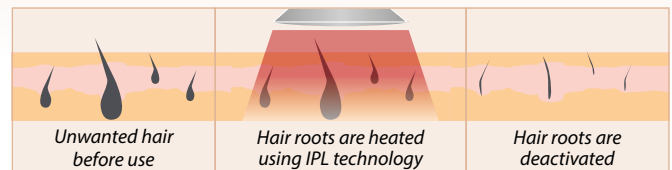
Only for
power supply:

**PC-IPL 3024****Hair removal system**

Gentle hair removal using IPL technology

Up to 55 % hair reduction after just 4 weeks

5 levels of light intensity



- > IPL – Light pulse hair removal
- > Hair remover for lasting, painless and long-running hair removal using IPL technology
- > Deactivates the hair root deep under the skin and prevents the growth of new hair
- > Range of application: Legs, arms, bikini zone, armpits, chest/bust, back
- > Up to 55 % hair reduction after just 4 weeks
- > 50,000 light impulses
- > 5 levels of light intensity for various skin types (I–IV) and dark blonde to black hair
- > Integrated UV-filtre
- > Comfortable application thanks to ergonomically designed case
- > Safety automatic – sensor begins treatment only upon direct contact with the skin
- > Automatic shut-off after 10 minutes
- > Light surface: 2.7 cm²
- > Intensity density: 4 J / cm²
- > Wavelength: 475–1200 nm
- > Incl. safety glasses
- > 100–240 V, 50/60 Hz

The following accessories are available:**Replacement cartridge PC-IPL 3024**

Art. no.: 399 995 | EAN: 4 006 160 399 950



Legs



Arms



Bikini zone



Armpits

Art. no.:	Art. EAN:	20" / 40" / HQ container
330 240	4 006 160 302 400	6530 / 12760 / 15312
Colour:	PU:	Device (W x H x D):
Nacre / pink	2	80 x 47 x 139 mm

Only for
power supply:



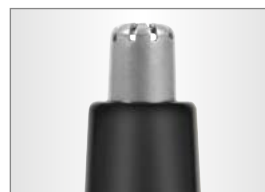
Hair and beard trimmer



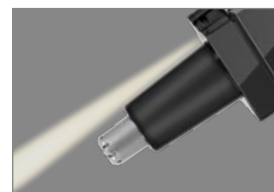
PC-NE 3050	Nose/ear hair remover
Stainless steel shaving head	
Incl. LED light for precise hair removal	
High-gloss housing	



- > Nose/ear hair remover in high-gloss housing
- > Conveniently and simply removes troublesome hairs in the nose and ears
- > On/off switch
- > Incl. LED light for precise hair removal
- > With covering cap and cleaning brush for the shaving head
- > Removable stainless steel shaving head for cleaning
- > Battery operation: 2x 1,5 V AAA (batteries not included)



360° stainless steel shaving head



Incl. LED light for precise hair removal

Art. no.: 330 500	Art. EAN: 4 006 160 305 005	20" / 40" / HQ container 64608 / 129228 / 156828
Colour: Black/silver	PU: 12	Device (W x H x D): 17 x 140 x 32 mm



4 006 160 305 005



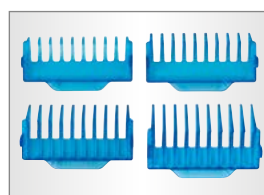


Vertically mounted stainless steel shaving head for:
– Nose/ear hair, eyebrows and contours



PC-BHT 3074	Body hair trimmer	
2in1 – Trimmer, styler, shaver and nose/ear hair remover		
Wet/dry operation		
Soft touch housing		

- > 2 in 1 – Trimmer, styler, shaver and nose/ear hair remover
- > Multifunctional body hair trimmer for facial and body hair for trimming, styling and shaving
- > Incl. 2 exchangeable heads:
 - 1x body groomer (36 mm width) for careful full body shaving (wet and dry) with 4 comb attachments (1, 2, 4, 6 mm)
 - 1x multifunction attachment with vertically mounted stainless steel shaving head for nose/ear hair, eyebrows and contours with comb attachment
- > Thorough and gentle hair removal even on sensitive parts of the body without skin irritation
- > Water jet protected housing (IPX5)
- > Soft touch housing
- > Detachable heads for easy cleaning
- > Easy handling due to ergonomically shaped handle
- > Accessories: cleaning brush, 5 comb attachments
- > Battery operation: 1x 1.5 V AA (battery not included)



Incl. 4 comb attachments for body groomer (1, 2, 4, 6 mm)



Incl. comb attachment for multifunction attachment

Art. no.:	Art. EAN:	20" / 40" / HQ container
330 740	4 006 160 307 405	14084 / 27144 / 31824
Colour:	PU:	Device (W x H x D):
Blue/Black	6	37 x 180 x 30 mm



4 006160 307405



Sales-promoting display box

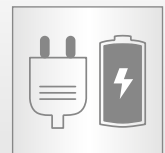



PC-HSM/R 3051 Professional hair/beard trimmer

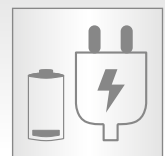
Direct drive function

Accumulator operation/mains operation

Stainless steel precision shaving head



Accumulator
operation/mains
operation



Direct drive function:
immediate mains
operation possible
when battery is fully
discharged

- > Professional hair/beard trimmer in high-gloss housing
- > Accumulator operation/mains operation
- > Direct drive function – with fully discharged battery, the razor can be used immediately when connected to the mains
- > Incl. travel charging adapter for 100–240 volt operation
- > Stainless steel precision shaving head for uniform haircut
- > 5 cutting lengths possible (0, 3, 6, 9, 12 mm)
- > 4 removable comb attachments
- > Easy handling due to ergonomically shaped handle
- > Removable shaving head for easy cleaning
- > LED charging indicator
- > Charging station/stand incl. rubberized feet for stability
- > Incl. 7 accessories: charging station/stand, travel charging adapter, cleaning brush, 4 comb attachments (3, 6, 9, 12 mm)
- > Power supply (power supply unit): 100–240 V, 50/60 Hz; rechargeable battery (NiMh): 2x 600 mAh
(Rechargeable battery: 2x nickel metal hydride, 10.00 g)



4 removable comb attachments
(3, 6, 9, 12 mm) + cleaning brush

Art. no.:	Art. EAN:	20" / 40" / HQ container
330 510	4 006 160 305 104	15180 / 30360 / 35760
Colour:	PU:	Device (W x H x D):
Black/Silver	6	36 x 155 x 28 mm



Only for
power supply:

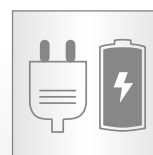


**NEW!**

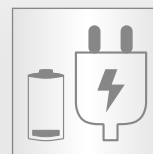
PC-HSM/R 3100	Professional hair/beard trimmer
Direct drive function	
Accumulator operation/mains operation	
Stainless steel precision shaving head	



Li ION
TECHNOLOGY



Accumulator
operation/mains
operation



Direct drive function:
immediate mains
operation possible
when battery is fully
discharged

- > Professional hair/beard trimmer in stainless steel housing
- > Accumulator operation/mains operation
- > Powerful lithium-ion battery
 - Longer battery life for professional cutting
 - Long-lasting with high capacity (2000 mAh)
- > Direct drive function – with fully discharged battery, the razor can be used immediately when connected to the mains
- > On/off switch
- > Incl. travel charging adapter for 100–240 V operation
- > Stainless steel precision shaving head for uniform haircut
- > 3-stage thinning function (switchable)
- > 5 cutting lengths possible (0, 3, 6, 9, 13 mm)
- > 4 removable comb attachments
- > Easy handling due to ergonomically shaped handle
- > LED display with battery charge level indicator in %
- > Battery running time up to 2.5 hours
- > Battery charging time approx. 2.5 hours
- > Incl. 7 accessories: charging power supply, cleaning brush, 4 comb attachments (3, 6, 9, 13 mm), covering cap
- > Hanging loop
- > Charging power supply: 100–240 V, 50/60 Hz; rechargeable battery (Li-Ion): 2000 mAh
(Rechargeable battery: 1x lithium-ion, 43.9 g)



LED display with battery charge status in %



4 removable comb attachments
(3, 6, 9, 13 mm) + cleaning brush

Art. no.:	Art. EAN:	20" / 40" / HQ container
331 000	4 006 160 310 009	12616 / 26636 / 31308
Colour:	PU:	Device (W x H x D):
Stainless steel	4	140 x 220 x 55 mm



4 006160 310009

Only for
power supply:



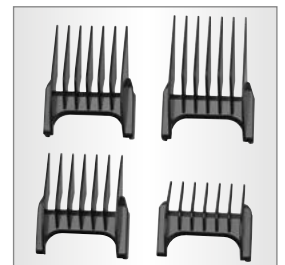


PC-HSM/R 3013 Hair/beard trimmer

Stainless steel front
Stainless steel precision shaving head
Accumulator operation



- > Hair/beard trimmer with high-quality stainless steel front
- > Accumulator operation (replaceable)
- > Incl. travel charging adapter for 100–240 volt operation
- > Stainless steel precision shaving head for uniform haircut
- > 5 cutting lengths possible (0, 4, 10, 14, 18 mm)
- > 4 removable comb attachments
- > 3-stage thinning function (switchable)
- > Easy handling due to ergonomically shaped handle
- > Removable shaving head for easy cleaning
- > LED charging indicator
- > Charging station/stand incl. rubberized feet for stability
- > Incl. 7 accessories: charging station/stand, travel charging adapter, cleaning brush, 4 comb attachments (4, 10, 14, 18 mm)
- > Power supply (power supply unit): 100–240 V, 50/60 Hz; rechargeable battery (NiMH): 2x 600 mAh
(Rechargeable battery: 2x nickel metal hydride, 13.92 g)



4 removable comb attachments
(4, 10, 14, 18 mm)

Art. no.: 330 130	Art. EAN: 4 006 160 301 304	20" / 40" / HQ container 6636 / 13752 / 16122
Colour: Black/ Stainless steel	PU: 6	Device (W x H x D): 46 x 175 x 45 mm



Only for
power supply:

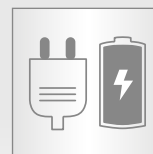


2ⁱⁿ
1

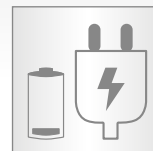
Incl. thinning function



Indication of the selected cutting level



Accumulator operation/mains operation



Direct drive function: immediate mains operation possible when battery is fully discharged

CLICK
HERE**PC-HSM/R 3052 NE Professional hair and beard trimmer**

Hair/beard trimmer and nose/ear hair remover

Accumulator operation/mains operation / Direct drive function

Stainless steel precision shaving head

**Hair and beard trimmer**

- > Accumulator operation/mains operation
- > Direct drive function – with fully discharged battery, the razor can be used immediately when connected to the mains
- > Stainless steel precision shaving head for uniform haircut
- > 5 cutting lengths possible: 3–16 mm in 1–9 levels
- > Indication of the selected cutting level
- > Removable comb attachment
- > Thinning function (switchable)
- > Easy handling due to ergonomically shaped handle
- > Soft touch housing – secure handling
- > Removable shaving head for easy cleaning
- > LED charging indicator
- > Charging station/stand with rubber feet for a safe standing

- > Incl. 4 accessories: charging station/stand, charger/power supply unit, cleaning brush, comb attachment

- > Power supply (power supply unit): 100–240 V, 50/60 Hz; rechargeable battery (NiMH): 2x 600 mAh
(Rechargeable battery: 1x nickel metal hydride, 27.00 g)

Nose/ear hair trimmer

- > Gently and comfortably removes unsightly nose and ear hair
- > With cleaning brush and covering cap for shaving head
- > Removable stainless steel shaving head for cleaning
- > Battery operation: 1x 1,5 V AA (battery not included)

Dimensions (mm)

- > Device hair/beard trimmer: (W x H x D): 45 x 180 x 49 mm, 0.22 kg
- > Nose/ear hair remover device: (W x H x D): approx. 25 x 135 x 25 mm, 0.05 kg

Art. no.:	Art. EAN:	20" / 40" / HQ container
330 520	4 006 160 305 203	12300 / 24600 / 29040
Colour:	PU:	Device (W x H x D):
Black/Blue	6	45 x 180 x 49 mm



4 006160 305203

Only for
power supply:

5ⁱⁿ
1Hair trimmer
(39 mm)Beard trimmer
(30 mm)

Men's shaver (30 mm)



Precision trimmer

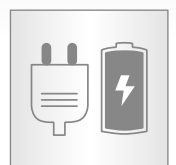
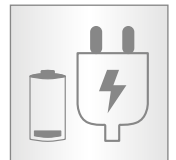
Nose/ear hair
remover**PC-BHT 3014 Hair trimmer set**

5 in 1 – Hair trimmer, men's shaver, beard trimmer, precision trimmer and nose/ear hair remover

Accumulator operation/mains operation / Direct drive function

Incl. 4 comb attach-
ments for hair trimmer
and 1 variable comb
attachment (4 steps)
for beard trimmer

- > 5 in 1 – Hair trimmer, men's shaver, beard trimmer, precision trimmer and nose/ear hair remover
- > Multifunctional hair cutter for face and body hair with high-quality stainless steel inlay
- > Direct drive function – with fully discharged battery, the razor can be used immediately when connected to the mains
- > 3-stage thinning function (switchable)
- > Thorough and gentle hair removal even in sensitive areas of the body without skin irritation
- > Accumulator operation/mains operation
- > Incl. travel charging adapter for 100–240 volt operation
- > Incl. 5 replaceable stainless steel head attachments:
 - 1x hair cutting attachment (39 mm wide) with 4 comb attachments (3, 6, 9, 12 mm)
 - 1x beard cutting attachment (30 mm wide) with 1 comb attachment (2, 3, 4, 5 mm in 4 steps)
 - 1x shaver (30 mm wide)
 - 1x precision trimmer
 - 1x nose/ear hair remover
- > Easy handling due to ergonomically shaped handle
- > Removable stainless steel head attachments for easy cleaning
- > LED charging indicator
- > Incl. 8 accessories: charging station/stand, travel charging adapter, cleaning brush, 5 comb attachments
- > Power supply (power supply unit): 100–240 V, 50/60 Hz; rechargeable battery (NiMh): 2x 600 mAh
(Rechargeable battery: 2x nickel metal hydride, 16.20 g)

Accumulator
operation/mains
operationDirect drive function:
immediate mains
operation possible
when battery is fully
discharged

Art. no.:	Art. EAN:	20" / 40" / HQ container
330 140	4 006 160 301 403	9330 / 20040 / 23400
Colour: Black/ Anthracite	PU:	Device (W x H x D):
	6	47 x 170 x 46 mm

Only for
power supply:Sales-promoting
display box

5 in 1



Beard/hair trimmer (32 mm)



Men's shaver (22 mm)



Body groomer (37 mm) with long hair trimmer



Precision trimmer



Nose/ear hair remover

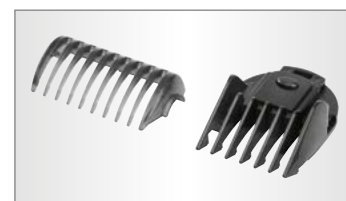
**PC-BHT 3015 Body groomer / Hair trimmer set**

5 in 1 – Beard/hair trimmer, men's shaver, body groomer, precision trimmer and nose/ear hair remover

Accumulator operation / Wet/dry function



- > 5 in 1 – Beard/hair trimmer, men's shaver, body groomer, precision trimmer and nose/ear hair remover
- > Multifunctional hair cutter for face and body hair
- > Thorough and gentle hair removal even in sensitive areas of the body without skin irritation
- > Accumulator operation
- > Wet/dry function
- > Incl. travel charging adapter for 100–240 volt operation
- > Water jet protected housing (IPX5)
- > Incl. 5 replaceable head attachments:
 - 1x beard/hair cutting attachment (32 mm wide) with comb attachment (8, 10, 12, 14 mm in 4 steps)
 - 1x men's shaver (22 mm wide)
 - 1x body groomer (37 mm wide) incl. 2 long-hair trimmers and removable long-hair attachment
 - 1x precision trimmer
 - 1x nose/ear hair remover
- > Easy handling due to ergonomically shaped handle
- > Removable head attachments for easy cleaning
- > LED charging indicator
- > Incl. 5 accessories: charging station/stand, travel charging adapter, cleaning brush, comb attachment, long-hair attachment
- > Power supply (power supply unit): 100–240 V, 50/60 Hz; rechargeable battery (NiMH): 2x 600 mAh
(Rechargeable battery: 1x nickel metal hydride, 23.40 g)



Incl. comb attachment and long-hair attachment

Art. no.:	Art. EAN:	20" / 40" / HQ container
330 150	4 006 160 301 502	8796 / 18408 / 20502
Colour:	PU:	Device (W x H x D):
Blue	6	58 x 174 x 40 mm



Only for power supply:



Sales-promoting display box





3 level cutting system
with flexible shaving
heads



Incl. unfoldable
long hair trimmer

CLICK
HERE

PC-HR 3053

Men's shaver

3 level cutting system with flexible shaving heads

Accumulator operation

Incl. unfoldable long hair trimmer



- > 3 level cutting system with flexible shaving heads for a fast and precise shave
- > Accumulator operation
- > Incl. unfoldable long hair trimmer
- > Removable shaving head for easy cleaning
- > Soft touch housing
- > Easy handling due to ergonomically shaped handle
- > Charging indicator
- > On/off switch
- > Accessories: battery charging cable, cleaning brush, covering cap, storage bag
- > Power supply: 220–240 V, 50 Hz; rechargeable battery (NiMH): 2x 600 mAh
(Rechargeable battery: 1x nickel metal hydride, 24.96 g)

The following accessories are available:

Replacement shaving head PC-HR 3053

Art. no.: 599 986 | EAN: 4 015 067 999 866

Art. no.:	Art. EAN:	20" / 40" / HQ container
330 531	4 006 160 305 319	7668 / 15888 / 18630
Colour:	PU:	Device (W x H x D):
Blue	6	57 x 150 x 70 mm

Art. no.:	Art. EAN:	20" / 40" / HQ container
330 530	4 006 160 305 302	7668 / 15888 / 18630
Colour:	PU:	Device (W x H x D):
Anthracyte	6	57 x 150 x 70 mm



4 006160 305319



4 006160 305302



Sales-promoting
display box





3 level cutting system with flexible shaving heads



LED display



PC-HR 3023

Men's shaver

3 level cutting system with flexible shaving heads

Accumulator operation/mains operation / Direct drive function

Quick charging function (60 min.)



- > 3 level cutting system with flexible shaving heads for a fast and precise shave
- > Water jet protected housing (IPX5)
- > Accumulator operation/mains operation possible
- > On/off switch
- > Long-life lithium ion battery
- > Incl. travel charging adapter for 100–240 volt operation
- > Quick charging function (60 min.)
- > Direct drive function – with fully discharged battery, the razor can be used immediately when connected to the mains
- > Incl. unfoldable long hair trimmer
- > Removable shaving head for easy cleaning
- > Electronic travel lock function
- > High-quality, scratch-resistant housing (chrome)
- > Multifunction LED display:
 - Display of the remaining battery charge in minutes
 - Battery state display
 - Charging indicator
 - Electronic cleaning interval display
 - Travel lock indicator
- > Accessories: travel charging adapter, cleaning brush, covering cap, storage bag
- > Power supply: 100–240 V, 50/60 Hz; rechargeable battery (Li-Ion): 800 mAh
(Rechargeable battery: 1x lithium-ion, 20.04 g)

The following accessories are available:

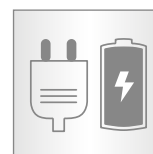
Replacement shaving head PC-HR 3023

Art. no.: 399 996 | EAN: 4 006 160 399 667

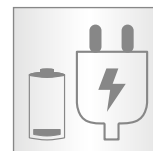
Art. no.:	Art. EAN:	20" / 40" / HQ container
330 230	4 006 160 302 301	8432 / 16892 / 19668
Colour:	PU:	Device (W x H x D):
Black/Chrome	4	60 x 160 x 60 mm



Only for power supply:



Accumulator operation/mains operation



Direct drive function: immediate mains operation possible when battery is fully discharged



Sales-promoting display box



Dental care



PC-EZ 3054	Electric toothbrush
Fast oscillating brush head	
Rounded Tynex DuPont® quality fibers	
Battery operation	



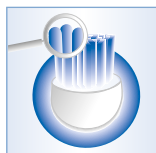
- > Fast oscillating brush head (bidirectional) for a gentle and effective removal of dental plaque and discolourations
- > Brush with rounded Tynex DuPont® quality fibers, gentle to teeth and gums
- > Soft touch on/off switch (splash-proof)
- > Accessories: 1 brush attachment, replacement brushes available
- > Battery operation: 2x 1.5 V AA (batteries not included)



Oscillating
(bidirectional)



Effective plaque
removal



Rounded bristles

The following accessories are available:

Accessory set PC-EZ 3054 / 3055

4er blister replacement brushes

Art. no.: 599 994 | EAN: 4 015 067 999 941

Art. no.:	Art. EAN:	20" / 40" / HQ container
330 540	4 006 160 305 401	34200 / 70800 / 80700
Colour:	PU:	Device (W x H x D):
White/Blue	6	35 x 215 x 30 mm



4 006160 305401



PC-EZS 3000	Electric sonic toothbrush
Sonic function (25,000 vibrations per minute)	
Rounded Tynex DuPont® quality fibers	
Battery operation	



- > Sonic, extremely fast vibrations (25,000 vibrations/min.) of the brush head provide effective plaque removal and stimulate the gums
- > Incl. 2 brush heads for optimal dental care and oral hygiene
- > Brush with rounded Tynex DuPont® quality fibers, gentle to teeth and gums
- > One button operation
- > Soft touch on/off switch
- > Water jet protected housing (IPX5)
- > Battery operation: 1x 1.5 V AAA (battery not included)



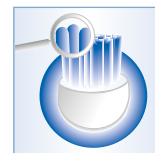
Incl. 2 attachments



Sonic (25,000
vibrations/min.)



Effective plaque
removal



Rounded bristles

The following accessories are available:

Accessory set PC-EZS 3000

4er blister replacement brushes

Art. no.: 399 999 | EAN: 4 006 160 399 998

Art. no.:	Art. EAN:	20" / 40" / HQ container
330 000	4 006 160 300 000	40190 / 80390 / 97600
Colour:	PU:	Device (W x H x D):
White/Blue	10	Ø 18 mm x 195 mm



4 006160 300000



**PC-EZ 3055****Electric battery toothbrush**

Fast oscillating brush head

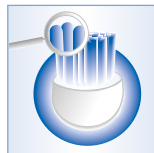
Rounded Tynex DuPont® quality fibers

Accumulator-operated



- > Fast oscillating brush head (bidirectional) for a gentle and effective removal of dental plaque and discolourations
- > Brush with rounded Tynex DuPont® quality fibers, gentle to teeth and gums
- > Contactless induction charging of the accumulator
- > Waterproofed housing (IPX7)
- > Charging indicator light
- > Practical charging station with brush compartment (for wall mounting, with mounting material)

- > Soft touch insert
- > Soft touch on/off switch
- > Slim design
- > Accessories: 4 brush attachments, replacement brushes available, mounting material
- > 220–240 V, 50 Hz, 1.5 W, rechargeable battery: 1x AA, 800 mAh; 1,2 V (Rechargeable battery: 1x nickel metal hydride, 16.40 g)

Oscillating
(bidirectional)Effective plaque
removal

Rounded bristles

The following accessories are available:**Accessory set PC-EZ 3054 / 3055****4er blister replacement brushes**

Art. no.: 599 994 | EAN: 4 015 067 999 941

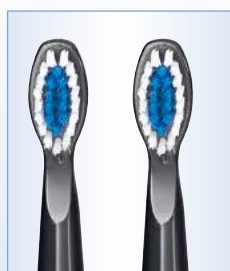
Incl. 3 brush heads and
3 cleaning jets

Art. no.:	Art. EAN:	20" / 40" / HQ container
330 550	4 006 160 305 500	11400 / 24000 / 27300
Colour:	PU:	Device (W x H x D):
White/Blue	6	45 x 250 x 95 mm

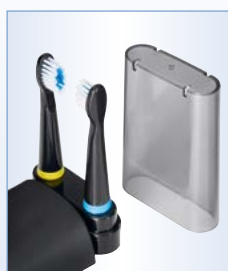


4 006160 305500





Incl. 2 attachments



Practical stand with brush compartment

**PC-EZS 3056 Electric battery sonic toothbrush**

Sonic (approx. 30,000 vibrations per minute)

Rounded Tynex DuPont® quality fibers

Long-life lithium ion battery


Li ION
TECHNOLOGY

- > Sonic, extremely fast vibrations (approx. 30,000 vibrations/min.) of the brush head provide effective plaque removal and stimulate the gums
- > Long-life lithium ion battery
- > Incl. 2 brush heads for optimal dental care and oral hygiene
- > Brush with rounded Tynex DuPont® quality fibers, gentle to teeth and gums
- > Ergonomic handle
- > 4-level switches (Clean/Sensitive/Massage/Off)
- > Soft touch switch
- > Contact-free induction charging of the lithium ion battery

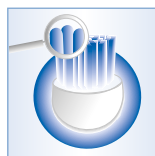
- > Water-proofed housing (IPX7)
- > Charging indicator light – low charge warning (flashes red)
- > Electronic protection against excessive charging
- > Protection against deep discharge
- > Practical stand with brush compartment
- > Indication of 3 speed levels by blue LED
- > Incl. 2 minutes timer (min. brushing time recommended by dentists)
- > 4 zone interval timer
- > 100–240 V, 50/60 Hz, 1.4 W, rechargeable battery (Li-Ion): 260 mAh; DC 3.7 V
(Rechargeable battery: 1x lithium-ion, 20.00 g)



Sonic (approx. 30,000 vibrations/min.)



Effective plaque removal



Rounded bristles

Art. no.:	Art. EAN:	20" / 40" / HQ container
330 560	4 006 160 305 609	7236 / 15624 / 18144
Colour:	PU:	Device (W x H x D):
Black/Chrome	6	110 x 230 x 70 mm

The following accessories are available:**Accessory set PC-EZS 3056****4er blister replacement brushes**

Art. no.: 399 991 | EAN: 4 006 160 399 912



4 006160 305609



Li ION
TECHNOLOGY



Incl. 3 brush heads and 3 cleaning jets

PC-DC 3031	Dental center
Sonic function (31,000 vibrations per minute)	
Cordless use	
4-level switches for controlling the water pressure	



- > Electric battery sonic toothbrush (wireless)
- > Sonic, extremely fast vibrations (31,000 vibrations/min.) of the brush head provide effective plaque removal and stimulate the gums
- > Incl. 3 brush heads for optimal dental care and oral hygiene, with different color markers
- > Brush with rounded Tynex DuPont® quality fibers, gentle to teeth and gums
- > Comfortable handling by wireless induction charging function
- > Water-proofed housing (IPX7)
- > LED charging indicator
- > Electronic protection against excessive charging
- > 4-level switches (Clean/Sensitive/Massage/Off)
- > Indication of 3 speed levels by blue LEDs
- > Incl. 2 minute timer (min. brushing time recommended by dentists)
- > 4 zone interval timer
- > Long-life lithium ion battery
- > Incl. induction charging station with brush storage
- > 100–240 V, 50/60 Hz, 1.2–2.8 W, rechargeable battery (Li-Ion): 650 mAh; 3.7 V

Art. no.: 330 310	Art. EAN: 4 006 160 303 100	20" / 40" / HQ container 4900 / 10548 / 12812
Colour: White/Blue	PU: 4	Device (W x H x D): 160 x 300 x 140 mm



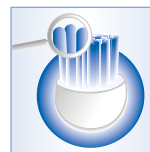
- > Cordless oral irrigator
- > Cordless oral irrigator for optimum oral hygiene and for cleaning, massaging gums and cleaning between teeth
- > Accumulator-operated (approx. 60 uses)
- > Integrated water tank in the handle (approx. 150 ml max.) – removable for easy filling and cleaning
- > 4-level switches for controlling the water pressure (normal/soft/pulse/off)
- > Pulsating water jet
- > Water-proofed housing (IPX7)
- > 3 cleaning jets with different color markers
- > Comfortable handling by wireless induction charging function
- > Electronic protection against excessive charging
- > LED charge level indicator
- > Automatic shutdown for safe travel transport
- > Indication of 3 water pressure stages by blue LEDs
- > Container is suitable for mouthwash
- > Long-life lithium ion battery
- > Incl. induction charging station with nozzle storage
- > 100–240 V, 50/60 Hz, 1.2–2.8 W, rechargeable battery (Li-Ion): 1500 mAh; 3.7 V
(Rechargeable battery: 1x lithium-ion, 34.46 g)



Sonic (31,000 vibrations/min.)



Effective plaque removal



Rounded bristles



Pulsating water jet

The following accessories are available:
6 replacement attachments (3 + 3)
Art. no.: 399 994 | EAN: 4 006 160 399 943



PC-MD 3005	Oral irrigator	
Water container (removable): capacity approx. 600 ml max.		
Timer function		
Continuously adjustable water pressure		

- > For optimum oral hygiene and for cleaning, massaging gums and cleaning between teeth
- > Continuously adjustable water pressure
- > Switch on the handle for interrupting the jet of water
- > On/off switch on the base
- > 2 minutes timer (recommended cleaning duration)
- > 3 cleaning jets and 1 attachment for tong cleaning with different colour markers
- > Lid with integrated storage compartment for attachments
- > Water container (approx. 600 ml max.) with drop stop (removable)
- > Easy installation of handset with magnet holder
- > Depositing device for the hose
- > Container is suitable for mouthwash
- > Splash-proofed housing (IPX4)
- > Power supply: Input: 100–240V, 50/60Hz, 0.8 A; Output: 12 V = 1500 mAh



Lid with integrated storage compartment for attachments



Attachment for tongue cleaning

Art. no.:	Art. EAN:	20" / 40" / HQ container
330 050	4 006 160 300 505	3396 / 8284 / 10056
Colour:	PU:	Device (W x H x D):
White/Blue	4	145 x 205 x 115 mm

**The following accessories are available:
4 replacement attachments in storage box**

Art. no.: 399 998 | EAN: 4 006 160 399 981



4 006160 300505





Health & Fitness



PC-FM 3099	Foot massager
Shiatsu massage due to motor-driven 3D drums	
3 massage programs	
3 intensity levels	



- > Foot massage device for intensive stimulation of the feet in shiatsu technique
- > Shiatsu massage due to motor-driven 3D drums
- > Combination of air compression, kneading balls and heat application
- > The massager promotes blood circulation and helps you to relax and regenerate comfortably after a hard day
- > Infrared technology, muscle-relaxing deep heat due to infrared light waves
- > Easy-care inner cover removable (washable and skin-friendly)
- > 3 massage programs
- > 3 intensity levels
- > Intuitive control panel incl. LED display & LED control indicators
- > Heat/heating function
- > Incl. timer (5–30 min.) with remaining time display
- > Cable rewind
- > 220–240 V, 50–60 Hz, 40 W

Infrared technology



Infrared technology, muscle-relaxing deep heat due to infrared light waves



Easy-care inner cover (removable and washable)



*Shiatsu foot massage –
1= air compression, 2= kneading
and rolling, 3= kneading & pressure,
4= infrared-/heat function*

Art. no.:	Art. EAN:	20" / 40" / HQ container
330 990	4 006 160 309 904	550 / 1170 / 1450
Colour:	PU:	Device (W x H x D):
Titan / Black	1	360 x 240 x 420 mm



LED display – display of remaining time



PC-FM 3027	Foot massager
Intense whirlpool effect	
Heated footrest	
4 application possibilities	



- > Intense whirlpool effect
- > Massage burls for stimulating the foot reflex zones
- > 4 additional massage rollers for selective foot reflex zone massage
- > Heated footrest
- > 4-level switches
- > 4 application possibilities:
 - Selective foot reflexology
 - Vibration massage
 - Whirl/warm
 - Vibration massage/whirl/warm

- > Can be used with and without water
- > Water level indicator
- > Integrated carrying handle
- > Large rubberized feet for slip-proof stand
- > 220–240 V, 50 Hz, 80 W



4 additional massage rollers
for selective foot reflex zone massage

Art. no.:	Art. EAN:	20" / 40" / HQ container
330 270	4 006 160 302 707	810 / 1678 / 1970
Colour:	PU:	Device (W x H x D):
White/Bordeaux	2	357 x 195 x 410 mm





ECO
environmentally
friendly
& sustainable



Kinetic energy –
no purchase of
batteries necessary!

NEW!



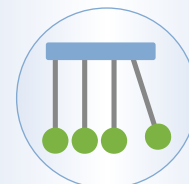
PC-PW 3112	Kinetic bathroom scale
Electronic glass personal scale	
Kinetic energy – no purchase of batteries necessary!	
No environmental impact	



- > Kinetic personal scale without the use of batteries
- > Independent energy generation by a short foot press on the power button
- > Sustainable technology - ecologically valuable thanks to no battery operation – no environmental pollution as well as environmentally friendly
- > Extra large, high-quality and easy-care glass surface approx. 31 x 31 cm (hygienic and scratch-resistant)
- > Extra large LCD display
- > Unit of measurement in kg, lb (switchable)
- > Measuring range from 5-180 kg in 100 g steps
- > Automatic switch-off
- > Low power and overload indicator
- > Secure stand due to anti-slip feet



Independent energy generation
by a short foot press on the
power button



Kinetic energy is the term used to
describe energy that is generated
when a body moves. Other words
for this are, for example, kinetic
energy or velocity energy.

Art. no.:	Art. EAN:	20" / 40" / HQ container
331 120	4 006 160 331 127	4063 / 8577 / 10082
Colour:	PU:	Device (W x H x D):
white	4	310 x 44 x 310 mm



4 006160 331127



Art. no.:	Art. EAN:	20" / 40" / HQ container
331 121	4 006 160 131 123	4063 / 8577 / 10082
Colour:	PU:	Device (W x H x D):
black	4	310 x 44 x 310 mm



4 006160 131123



**Surface made of
100 % bamboo:**

- Organic
- Sustainable
- Renewable



NEW!



PC-PW 3103	Bamboo bathroom scale
LCD display with temperature indication	
Measurement range 5–180 kg in steps of 50 g	
Surface made of 100 % bamboo	



- > Electronic bamboo bathroom scale with easy-to-read, high-quality LCD display with integrated temperature indication in °C
- > Surface made of 100% bamboo
 - Organic
 - Sustainable raw material
 - Renewable raw material
- > Weighing units in kg, lb (switchable)
- > Measurement range 5–180 kg in steps of 50 g
- > Secure stand due to anti-slip feet
- > Automatic shutdown increases battery life
- > Low battery indicator
- > Battery operation: 2x 1.5 V AAA (batteries not included)



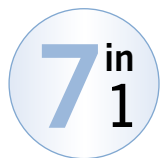
Easy-to-read, high-quality LCD display with integrated temperature indication in °C

Art. no.:	Art. EAN:	20" / 40" / HQ container
331 030	4 006 160 310 306	6000 / 12000 / 14004
Colour:	PU:	Device (W x H x D):
Bamboo	6	300 x 26 x 300 mm



4 006 160 310 306





PC-PW 3006 FA	7 in 1 Stainless steel analysis scale	
7 in 1 – Weight, body fat percentage, water percentage, muscle mass, bone mass, daily energy requirement, BMI		
High-quality stainless steel weighing area		

- > Electronic stainless steel personal scale for analysis of weight, body fat percentage, water percentage, muscle mass, bone mass, daily energy requirement (MBR), as well as BMI (body mass index)
- > Easy-to-read high-quality multifunction LCD display (black/white)
- > Memory for up to 10 different users
- > Weighing units in kg, lb, st (convertible)
- > Measurement range 5–180 kg in steps of 100 g
- > Modern sensor touch operation
- > Step-on automatic
- > Extra large, high-quality stainless steel weighing area (easy to clean, hygienic), approx. 31 x 33 cm
- > Anti-slip feet for stability
- > Automatic shutdown increases battery life
- > Low battery indicator
- > Battery operation: 4x 1.5 V AAA (batteries not included)



Easy-to-read high-quality multifunction LCD display (black/white)

Art. no.:	Art. EAN:	20" / 40" / HQ container
330 060	4 006 160 300 604	6000 / 12000 / 12000
Colour:	PU:	Device (W x H x D):
Stainless steel	4	310 x 25 x 330 mm



4 006160 300604



8ⁱⁿ
1



PC-PW 3007 FA	8 in 1 Glass analysis scale	
8 in 1 – Weight, body fat percentage, water percentage, muscle mass bone mass, organ fat, daily energy requirement, BMI		
High-quality safety glass surface		

- > Electronic glass personal scale with stainless steel insert for analysis of weight, body fat percentage, water percentage, muscle mass, bone mass, organ fat, daily energy requirement (MBR), as well as BMI (body mass index)
- > Easy-to-read high-quality multifunction LCD display (black/white)
- > Memory for up to 10 different users
- > Weighing units in kg, lb, st (convertible)
- > Measurement range 5–180 kg in steps of 100 g
- > Modern sensor touch operation
- > Step-on automatic
- > Extra-large high-quality, easy-to-clean safety glass surface, approx. 30 x 30 cm (W x D) (hygienic and scratchproof)
- > Stainless steel insert
- > Anti-slip feet for stability
- > Automatic shutdown increases battery life
- > Low battery indicator
- > Battery operation: 3x 1.5 V AAA (batteries not included)



Easy-to-read high-quality LCD display (black/white)

Art. no.: 330 070	Art. EAN: 4 006 160 300 703	20" / 40" / HQ container 6500 / 13200 / 13200
Colour: Black/ Stainless steel	PU: 6	Device (W x H x D): 300 x 21 x 300 mm



4 006 160 300 703



Art. no.: 330 071	Art. EAN: 4 006 160 300 710	20" / 40" / HQ container 6500 / 13200 / 13200
Colour: White/ Stainless steel	PU: 6	Device (W x H x D): 300 x 24 x 300 mm



4 006 160 300 710



9ⁱⁿ
1

Bluetooth™

Free app:



PC-PW 3008 BT 9 in 1 Diagnosis scale with Bluetooth

9 in 1 – Weight, body fat percentage, water percentage, muscle mass, bone mass, organ fat, daily energy requirement, BMI, biological age

Stainless steel



- > Electronic stainless steel diagnosis scale for analysis of weight, body fat percentage, water percentage, muscle mass, bone mass, organ fat, daily energy requirement (MBR), as well as BMI (body mass index) and biological age
- > Innovative technology – body data is transmitted to your app directly by modern Bluetooth smart technology
- > Additional functions via smartphone and tablet PC by free download a separate app*) via
- > Statistics/analyses can be accessed permanently via mobile access
- > Easy-to-read high-quality multifunction LCD display (black/white)
- > Memory for up to 10 different users
- > Weighing units in kg, lb, st (convertible)
- > Measurement range 5–180 kg in steps of 100 g
- > Modern sensor touch operation
- > Step-on automatic
- > Extra large, high-quality, and easy-to-clean stainless steel surface, approx. 30 x 30 cm (W x D) (hygienic)
- > Anti-slip feet for stability
- > Automatic shutdown increases battery life
- > Low battery indicator
- > Battery operation: 3x 1,5 V AAA (batteries not included)



Easy-to-read high-quality multifunction LCD display (black/white)

*) Apple system requirements: iOS 8.0 or higher + Bluetooth 4.0
Android system requirements: Android 4.4 or higher + Bluetooth 4.0

Art. no.: 330 080	Art. EAN: 4 006 160 300 802	20" / 40" / HQ container 5800 / 11600 / 13200
Colour: Black/ Stainless steel	PU: 4	Device (W x H x D): 300 x 22 x 300 mm



4 006 160 300 802





PC-FW 3058	Foot warmer	
Long-lasting and soothing warmth		
Electronic temperature control		
3 temperature levels adjustable		



Internal lining removable and machine washable

- > Foot warmer for long-lasting and soothing warmth
- > Electronic temperature control
- > Safety shut-off after 90 minutes
- > 3 temperature levels adjustable (illuminated)
- > Quick heating
- > Internal lining made of easy-to-clean fleece (removable and machine washable up to 40 °C)
- > Outer material of tough polyester (easy and hygienic cleaning)
- > One size – suitable for all shoe sizes*)
- > Overheating protection
- > 220–240 V, 50 Hz, 100 W

*) For all shoe sizes up to and including size 47

Art. no.:	Art. EAN:	20" / 40" / HQ container
330 580	4 006 160 305 807	1880 / 3756 / 4245
Colour:	PU:	Device (W x H x D):
Grey	3	300 x 240 x 350 mm

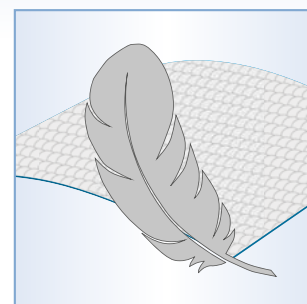


**NEW!**

PC-SNH 3097	Shoulder/Neck heating pad
3 temperature levels adjustable	
Long-lasting and soothing warmth	
Safety shut-off	



- > Heating pad for shoulder and neck for long-lasting and soothing warmth
- > Extra soft surface made from fleece fibers for special wearing comfort
- > The heating pad facilitates blood circulation in stiffened muscles in the shoulder and neck and helps you relax comfortably after a long and strenuous day
- > Machine-washable up to 40 °C
- > Cuddly and gentle on the skin
- > Optimum fit with support at neck and shoulder
- > Quick heating
- > Safety shut-off after 90 minutes
- > Precision electronic temperature control
- > 3 temperature levels adjustable (illuminated)
- > High-quality control unit (removable)
- > Overheating protection
- > Dimensions: approx. 52 x 50 cm
- > 220–240 V, 50 Hz, 100 W

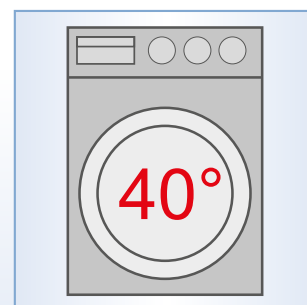


Extra soft surface made from fleece fibers for special wearing comfort



High-quality control unit (removable) – 3 temperature levels adjustable (illuminated)

Art. no.:	Art. EAN:	20" / 40" / HQ container
330 970	4 006 160 309 706	3116 / 6612 / 7796
Colour:	PU:	Device (W x H x D):
Grey	4	520 x 35 x 500 mm



Machine-washable up to 40 °C

**NEW!**

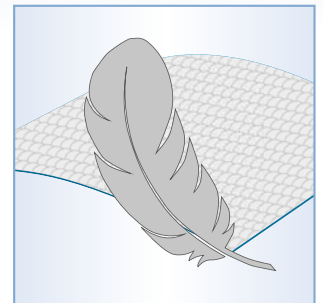
PC-RNH 3107	Back/Neck heating pad
3 temperature levels adjustable	
Long-lasting and soothing warmth	
Safety shut-off	



- > Back/Neck heating pad for long-lasting and soothing warmth
- > Extra soft surface made from fleece fibers for special wearing comfort
- > The heating pad facilitates blood circulation to hardened shoulder, neck and back muscles and helps you relax comfortably after a long and strenuous day
- > Machine-washable up to 40°C
- > Supple and gentle on the skin
- > Large heating surface – complete back area is covered
- > Optimum fit and support at shoulder, neck and back
- > Secure hold due to practical and variable button placket
- > Quick heating
- > Safety shut-off after 90 minutes
- > Precision electronic temperature control
- > 3 temperature levels adjustable (illuminated)
- > High-quality control unit (removable)
- > Overheating protection
- > Dimensions: approx. 60 x 85 cm
- > 220–240 V, 50 Hz, 120 W



Large heating surface – complete back area is covered



Extra soft surface made from fleece fibers for special wearing comfort



Secure hold due to practical and variable button placket

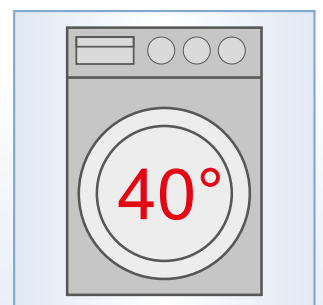


High-quality control unit (removable) – 3 temperature levels adjustable (illuminated)

Art. no.:	Art. EAN:	20" / 40" / HQ container
331 070	4 006 160 310 702	2988 / 6204 / 7468
Colour:	PU:	Device (W x H x D):
grey	4	600 x 850 x 5 mm




4 006160 310702



Machine-washable up to 40°C

**NEW!**

PC-EWF 3105	Electric hot water bottle	
Electronic controlled heating		
Long-lasting and soothing warmth		
Automatic switch-off (overheating protection)		

- > Electric hot water bottle for long-lasting and soothing warmth (cuddly, velvety and gentle on the skin)
- > For example, suitable for the abdomen, neck and back
- > Short heating time – ready for use within a few minutes (up to approx. 65 °C)
- > Fast reheating – unit can be reheated on the spot
- > Safe and uncomplicated handling – no need to transfer hot water as with ordinary hot water bottles
- > Electronic controlled heating with automatic switch-off (overheating protection)
- > Hot water bottle stays warm for several hours (depending on ambient temperature)
- > Outer material made of hard-wearing and skin-friendly flannel (easy and hygienic cleaning)
- > Dimensions: approx. 27.5 x 4.5 x 18.5 cm
- > 220–240 V, 50/60 Hz, 380 W



Short heating time – ready for use within a few minutes (up to approx. 65 °C)



Hot water bottle stays warm for several hours (depending on ambient temperature)

Art. no.:	Art. EAN:	20" / 40" / HQ container
331 050	4 006 160 310 504	6220 / 13312 / 14976
Colour:	PU:	Device (W x H x D):
grey	4	275 x 45 x 185 mm





PC-HK 3059	Heating pad	
Long-lasting and soothing warmth		
Electronic temperature control		
3 temperature levels adjustable		



Removable and machine-washable



Dimensions: approx. 30 x 40 cm

- > Heating pad for long-lasting and soothing warmth
- > Electronic temperature control
- > Safety shut-off after 90 minutes
- > 3 temperature levels adjustable (illuminated)
- > Quick heating
- > Removable, machine-washable (up to 40°C) pad from easy-care material
- > Heating element made of plastic, easy hygienic cleaning
- > Overheating protection
- > Dimensions: approx. 30 x 40 cm
- > 220–240 V, 50 Hz, 100 W

Art. no.:	Art. EAN:	20" / 40" / HQ container
330 590	4 006 160 305 906	6180 / 12660 / 14112
Colour:	PU:	Device (W x H x D):
White	6	320 x 5 x 430 mm





PC-WUB 3060	Electric underblanket
Long-lasting and soothing warmth	
Electronic temperature control	
3 temperature levels adjustable	



- > Electric underblanket for long-lasting and soothing warmth
- > 4 attachment straps ensure that the blanket will not slip and is easy to use
- > Safety shut-off
- > Electronic temperature control
- > 3 temperature levels adjustable
- > Quick heating
- > High-quality control panel (removable)
- > Machine-washable up to 40°C
- > Indicator light
- > Overheating protection
- > Dimensions: approx. 70 x 150 cm
- > 220–240 V, 50 Hz, 60 W



High-quality control panel (removable)



Dimensions: approx. 70 x 150 cm

Art. no.:	Art. EAN:	20" / 40" / HQ container
330 600	4 006 160 306 002	2496 / 5130 / 5802
Colour:	PU:	Device (W x H x D):
White	6	1550 x 5 x 740 mm



4 006160 306002





PC-WZD 3061	Electric blanket	TEST DEUTSCHLANDS BESTE HAUSHALTS- ELEKTROGERÄTE VERGLEICHEN SIE DIE PREISE ZU 2014 WAREN www.deutschlandstest.de
Long-lasting and soothing warmth		
Electronic temperature control		
10 temperature levels adjustable		

- > Electric blanket for long-lasting and soothing warmth (supple, fluffy and pleasing to the skin)
- > Adjustable timer for automatic switch-off after 1–9 hours
- > Safety shut-off
- > Electronic temperature control
- > 10 temperature levels adjustable
- > Quick heating
- > High-quality control panel with LED display (removable)
- > Machine-washable up to 40°C
- > Overheating protection
- > Dimensions: approx. 130 x 180 cm
- > 220–240 V, 50 Hz, 180 W



High-quality control panel with LED display (removable)



Dimensions: approx. 130 x 180 cm

Art. no.:	Art. EAN:	20" / 40" / HQ container
330 610	4 006 160 306 101	1356 / 2760 / 3150
Colour:	PU:	Device (W x H x D):
Grey	2	1300 x 5 x 1750 mm



4 006160 306101





PC-FT 3057	Clinical thermometer	TEST DEUTSCHLANDS BESTE HAUSHALTS- ELEKTROGERÄTE VERGLEICHSPREISSTUDIE 20 JAHRE MARKEN www.deutschlandbeste.de GUT MONEY
Measuring range 34–42 °C		
Acoustic end signal		
High-quality LCD display		

- > High-quality LCD display (easy to read)
- > Simple 1-button operation
- > Automatic saving of the last value
- > Automatic switch-off enhances battery life
- > Battery change indication on display
- > Acoustic end signal
- > Splash-proof
- > Incl. practical storage box
- > Battery operation: button cell 1.5 V (battery included)
(Battery: 1x alcali-manganese, 0.62 g)

Certified to CE 0197 / TÜV Rheinland, MDD 93/42/EEC,
ISO 13485, ISO 9001



Incl. practical storage box

Art. no.:	Art. EAN:	20" / 40" / HQ container
330 570	4 006 160 305 708	156240 / 317520 / 362880
Colour:	PU:	Device (W x H x D):
White	12	126 x 10 x 18 mm



CE 0197

Infrared measurement technology (contactless and hygienic)

Suitable for babies, toddlers and adults



Illuminated LCD display



PC-FT 3095 Contactless forehead thermometer

Forehead thermometer for contactless measurement

Infrared measurement technology (contactless and hygienic)

Suitable for babies, toddlers and adults



LCD fever signal light



- > Forehead thermometer for contactless and hygienic measurement of body temperature
- > Suitable for babies, toddlers and adults
- > 3-colour LCD fever signal light:
 - green: normal temperature (34.0°C–37.4°C)
 - orange: increased temperature (37.5°C–37.9°C)
 - red: fever (38.0°C–43.0°C)
- > Illuminated LCD display (easy to read) – ideal for sleep/dark measurements
- > Acoustic end signal
- > Silent mode – signal tone can be switched off for sleep measurements without disturbing the baby or toddler during sleep
- > Display for: fever measurement, 3-colour fever signal light (normal temperature, increased temperature, fever), Celsius, Fahrenheit, signal tone (on/off), battery change

- > Infrared measurement technology (contactless and hygienic)
- > Measuring range body temperature: 34.0°C–43.0°C
- > Simple 1-button operation
- > Precise measurement of body temperature in °C and °F
- > Measurement result in 1 second
- > Measuring function automatically switches off (after approx. 8 sec.), increases battery life
- > Battery change indicator on the display
- > Easy cleaning
- > Battery operation: 2x 1.5 V AAA (batteries not included)

Art. no.:	Art. EAN:	20" / 40" / HQ container
330 950	4 006 160 309 508	24300 / 48600 / 54000
Colour:	PU:	Device (W x H x D):
White	6	32 x 140 x 47 mm

Certified according to CE 0197/TÜV Rheinland, MDD 93/42/EEC, ISO 13485



4 006160 309508



CE 0197

2 in 1

**Forehead thermometer:
Body temperature and
surface temperature**

**Suitable for
babies, toddlers
and adults**



Large, illuminated LCD display



PC-FT 3094 Contactless forehead thermometer

2 in 1 forehead thermometer

Contactless dual measuring system


Suitable for babies, toddlers and adults



LCD fever signal light



up to 37,5°C 37,6–37,9°C from 38,0°C

- > 2 in 1 forehead thermometer:
 - body temperature
 - surface temperature
- > Suitable for babies, toddlers and adults
- > Contactless dual measuring system (switchable) – measurement of:
 - body temperature
 - surface temperature such as bath water or baby food*)
- > 3-colour LCD fever signal light incl. fever alarm: 
 - green: normal temperature (up to 37.5°C)
 - orange: increased temperature (37.6°C–37.9°C)
 - red: fever (from 38.0°C)
- > Fever alarm (acoustic and optical)
 - Fever range variably adjustable from 37.0°C–42.5°C
- > Extra large, illuminated LCD display – ideal for sleep/dark measurements (background lighting can be switched off)
- > Acoustic end signal
- > Silent mode – signal tone can be switched off for sleep measurements without disturbing the baby or toddler during sleep

- > Display for: fever/surface measurement, 3-colour fever signal light (normal temperature, increased temperature, fever), Celsius, Fahrenheit, too high/low, temperature (Hi/Low), memory function (32 memory locations), signal tone (on/off), battery change
- > Infrared measurement technology (contactless and hygienic)
- > Measuring range body temperature: 32°C–42.9°C
- > Measuring range surface temperature: 0°C–100°C
- > Precise measurement of body temperature in °C and °F
- > Measurement result in 1 second
- > 32 memory locations
- > Measuring function automatically switches off (after approx. 10 sec.), increases battery life
- > Battery change indicator on the display
- > Easy cleaning
- > Battery operation: 2x 1.5 V AAA (batteries not included)

*) Measurement results only provide orientation values. In contrast to the precise and binding measurements on the human forehead, the measured values of surfaces are only for orientation.

Art. no.:	Art. EAN:	20" / 40" / HQ container
330 940	4 006 160 309 409	14000 / 28380 / 36000
Colour:	PU:	Device (W x H x D):
White / silver	6	115 x 155 x 46 mm

**Certified according to CE 0197/TÜV Rheinland,
MDD 93/42/EEC, ISO 13485**



4 006160 309409



CE 0197

**PC-PO 3104****Puls oximeter**To determine SpO₂, pulse and PI in %

Particularly suitable for heart failure, chronic lung disease, COPD, sleep apnoea, long covid or asthma



- > 3 in 1 pulse oximeter for determining:
 - the arterial oxygen saturation (SpO₂)
 - heart rate (pulse)
 - the perfusion index (PI) blood flow in %
- > For control and regular monitoring
- > Also for use in hospital/rehab, during sports or for supportive medical treatment
- > Particularly suitable for heart failure, chronic lung disease, COPD, sleep apnoea, long covid or asthma
- > Simple and painless measurement in seconds
- > Compact design and practical belt pouch make it suitable for use at home or on the move
- > Also applicable for sports at high altitudes (e.g. mountaineering, skiing and sport flying)
- > Auto Rotate – automatic rotation of the display
- > Easy to read multifunction LCD colour display
 - Oxygen saturation (%SpO₂)
 - Heart rate (PRbpm)
 - Blood flow (PI%)
 - Pulse wave (graphic pulse display)
 - Pulse intensity
 - Auto power off / Low battery indicator
 - Faulty measurement
- > Adjustable display brightness
 - 5 levels
 - Direct sunlight / dark environment
 - Low power consumption
- > Accessories: belt pouch
- > Power supply: 2x 1.5 V (AAA) (batteries not included)



Simple and painless measurement in seconds



Auto Rotate – automatic rotation of the display



Display of: Oxygen saturation, heart rate, perfusion index, pulse wave (display depends on display orientation)

Art. no:	Art. EAN:	20" / 40" / HQ container
331 040	4 006 160 310 405	28800 / 57000 / 66000
Colour:	PU:	Device (W x H x D):
white	6	57 x 32 x 31 mm





PC-BMG 3018	Blood pressure monitor
Fully automatic blood pressure and pulse measurement	
Indication of 3 values (systole, diastole, pulse)	
2x 60 memory locations (ideal for up to 2 users)	



- > Fully automatic blood pressure and pulse measurement, precise and fast on the wrist
- > Easy to use
- > Large LCD display, easy to read
- > Classification of measurements according to WHO (World Health Organisation) assessment system
- > Measuring range blood pressure: Sys: 60–260 /Dia: 40–199 mmHg
- > Measuring range pulse: 40–180 beats/minute
- > Indication of 3 values (systole, diastole, pulse)
- > Arrhythmia detection (irregular heartbeat)
- > 2x 60 memory locations (ideal for up to 2 users)
- > Average value calculated from the last 3 readings, ideal for monitoring long-term measurement
- > Display of date and time
- > Long lasting hook-and-loop fastener for wrist circumference of 14–19.5 cm
- > Automatic acoustic signal at the beginning and end of a measurement
- > Automatic switch-off (after 1 minute without use), increases the battery life
- > Battery change indication
- > Battery operation: 2x 1.5 V AAA (batteries not included)
- > Certified according to EN1060/MDD/CE0197



Art. no.:	Art. EAN:	20" / 40" / HQ container
330 180	4 006 160 301 809	28512 / 59616 / 64587
Colour:	PU:	Device (W x H x D):
White/Black	6	83 x 50 x 63 mm





PC-BMG 3019	Upper arm blood pressure monitor
Fully automatic blood pressure and pulse measurement	
Indication of 3 values (systole, diastole, pulse)	
2x 60 memory locations (ideal for up to 2 users)	



- > Fully automatic blood pressure and pulse measurement, precise and fast on the upper arm
- > Easy to use
- > Extra large LCD display, easy to read
- > Large operation buttons for easy handling
- > Classification of measurements according to WHO (World Health Organisation) assessment system
- > Measuring range blood pressure: Sys: 60–260 /Dia: 40–199 mmHg
- > Measuring range pulse: 40–180 beats/minute
- > Indication of 3 values (systole, diastole, pulse)
- > Arrhythmia detection (irregular heartbeat)
- > 2x 60 memory locations (ideal for up to 2 users)
- > Average value calculated from the last 3 readings, ideal for monitoring long-term measurement
- > Display of date and time
- > Extra long cuff for upper arm circumference of 30–42 cm
- > Automatic acoustic signal at the beginning and end of a measurement
- > Automatic switch off (after 1 minute without use) increases the battery life
- > Incl. convenient storage bag
- > Battery change indication
- > Battery operation: 4x 1.5 V AA (batteries not included)
- > Certified according to EN1060/MDD/CE0197



Art. no.:	Art. EAN:	20" / 40" / HQ container
330 190	4 006 160 301 908	10032 / 21120 / 23760
Colour:	PU:	Device (W x H x D):
White/Black	6	138 x 50 x 98 mm





Indoor climate



PC-LB 3077	Air humidifier	
Ultrasonic technology		
Hygienic and bacteria-free humidification		
Operating time up to 40 hours		

- > Air humidifier with ultrasonic technology for optimal humidity control
- > Activated Carbon Filter – antibacterial and prevents calcification
- > Hygienic and bacteria-free room humidification
- > Reduces the number of germs
- > Switchable ion function: for fresh, electrostatically neutral air – The electrical ionisation of the air causes dust particles to become electrostatically charged. This causes them to combine to form larger particles and remain in the filter more reliably
- > Low condensation through water atomization, producing finest mist particles (10 µ) – no wetting of table or floor with water¹⁾
- > Effective air humidification for rooms up to 50–60 m² ²⁾
- > Ideal for bedrooms, children's rooms, living rooms or offices
- > 3 operating modes
 - Sleep mode/energy-saving mode: Low noise operation with dimmed control panel for minimum power consumption
 - Automatic – automatic humidity regulation from 45 to 80 %
 - 3 power settings
- > Multifunction LED display with sensor touch operation (illuminated)

- > Timer function (1, 2, 4, 8 hours)
- > Air intake filter (removable)
- > 5 litres water tank for air humidification of up to 300 ml/h
- > Operating time of up to 40 hours
- > Room temperature display
- > Electrical indication at low filling capacity
- > Removable water tank for easy filling
- > Low noise operation
- > Convenient carrying handle for water tank
- > Easy to use
- > Addition of essential oils possible
- > Incl. multifunction remote control and battery (1x CR2025, 3 V)
- > 220–240 V, 50/60 Hz, 25 W
(Battery: 1x lithium, 2.45 g)

¹⁾ Depending on operating period etc.

²⁾ Depending on climatic conditions



Multifunction LED display with sensor touch operation incl. room temperature display



Art. no.:	Art. EAN:	20" / 40" / HQ container
330 770	4 006 160 307 702	1288 / 2640 / 2868
Colour:	PU:	Device (W x H x D):
White	2	195 x 328 x 205 mm



**SLEEP
MODE** 



Sleep mode/energy-saving mode: whisper-quiet operation with turned off ambient lighting for minimal power consumption



Sensor touch operation

Incl. decorative ambient lighting



PC-LR 3075	Air purifier
Comfort air purifier for a pleasant room climate	
EPA filter, filters up to 99.5 % of the allergens	
Additional ion function	



- > Comfort air purifier in appealing design for a pleasant room climate incl. decorative ambient lighting
- > Air cleaning for rooms up to 20 m²*) without chemical additives
- > 2 filter system – air cleaning is carried out by 2 filter stages:
 - Stage 1: **Prefilter** – for coarse particles such as hair, animal hair, skin particles (washable)
 - Stage 2: **EPA filter** – for fine particles such as dust, pollen, smoke, nicotine – filters up to 99.5 % of the allergens/suspended matters from indoor air
- > Additional ion function: for fresh, electrostatically neutral air – The electrical ionisation of the air causes dust particles to become electrostatically charged. This causes them to combine to form larger particles and remain in the EPA filter more reliably
- > 3 power levels
 - Sleep mode/energy-saving mode: whisper-quiet operation with turned off ambient lighting for minimal power consumption
 - Medium
 - High
- > Easy to use
- > Sensor touch operation
- > 4 LED indicator lights
- > Low noise operation
- > Easy filter change
- > 220–240 V, 50 Hz, 25 W

*) The information refers to "average" air quality contamination.

Performance data are diminished when product is used with air contaminated with pollen, smoke or nicotine.

Art. no.:	Art. EAN:	20" / 40" / HQ container
330 750	4 006 160 307 504	1950 / 4010 / 4630
Colour:	PU:	Device (W x H x D):
White	2	160 x 235 x 175 mm

The following accessories are available:
Replacement filter set (2x2-fold filter) for PC-LR 3075
 Art. no.: 399 988 | EAN: 4 006 160 399 882



4 006160 307504



HEPA filter, filters up to 99.95 % of the allergens as well as various bacteria and viruses from indoor air

**SLEEP
MODE** 



Sensor touch operation



Sensor touch operation incl. room temperature display



APD sensor
red = inadequate
yellow = sufficient
blue = satisfying
green = good



Incl. multifunction remote control



PC-LR 3076	Air purifier
Comfort air purifier for a pleasant room climate	
4-fold filter system	
Switchable ion function	



HEPA FILTER SYSTEM

Also filters
various bacteria
and viruses

- > Comfort air purifier for a pleasant room climate incl. 4-fold filter system, ion function and APD sensor
- > Air cleaning for rooms up to 60 m²*) without chemical additives
- > 4-fold filter system:
 - Stage 1: **Prefilter** – for coarse particles such as hair, animal hair, skin particles (washable)
 - Stage 2: **HEPA filter** – for fine particles such as dust, pollen, smoke, nicotine – filters up to 99.95% of the allergens/suspended matters as well as various bacteria and viruses from indoor air
 - Stage 3: **Activated carbon filter** – binds and neutralizes odours such as nicotine smell, food smell, etc.
 - Stage 4: **Catalytic filter** – neutralizes harmful environmental gases such as formaldehyde, benzene, ammonia, nicotine
- > APD sensor (Air pollution detection) – permanent control and colour display of air quality
 - green: good
 - blue: satisfying
 - yellow: sufficient
 - red: inadequate

- > Switchable ion function: for fresh, electrostatically neutral air – The electrical ionisation of the air causes dust particles to become electrostatically charged. This causes them to combine to form larger particles and remain in the HEPA filter more reliably
- > 3 operating modes
 - Sleep mode/energy-saving mode: whisper-quiet operation with dimmed operating panel for minimal power consumption
 - Automatic
 - 3 blower stages
- > Sensor touch operation
- > 12 hours timer / Room temperature display
- > Low noise operation / Child lock
- > Easy filter change due to exchangeable compact filter cartridge
- > Incl. multifunction remote control and battery (1x CR2025, 3V)
- > 230 V, 50 Hz, 45 W
(Battery: 1x lithium, 2.20 g)

*) The information refers to "average" air quality contamination. Performance data are diminished when product is used with air contaminated with pollen, bacteria or viruses.

Art. no.:	Art. EAN:	20" / 40" / HQ container
330 760	4 006 160 307 603	480 / 1000 / 1180
Colour:	PU:	Device (W x H x D):
White	1	333 x 514 x 180 mm

The following accessories are available:
Replacement filter set (4-fold filter) in compact box for PC-LR 3076
Art. no.: 399 989 | EAN: 4 006 160 399 899



4 006160 307603



HEPA filter, filters up to 99.95 % of the allergens as well as various bacteria and viruses from indoor air

SLEEP
MODE

WiFi

Free app³⁾:



Sensor touch operation / digital display



APD sensor
red = inadequate
yellow = satisfying
green = good

HEPA
FILTER SYSTEM

Also filters
various bacteria
and viruses



PC-LR 3083	Air purifier
Comfort air purifier for a pleasant room climate	
4-fold filter system	
Additional ion function	



The following accessories are available:

Replacement filter set (4-fold filter)
in compact box for PC-LR 3083

Art. no.: 399 987 | EAN: 4 006 160 778 618



Incl. multifunction remote control

- > Comfort air purifier for a pleasant room climate incl. 4-fold filter system, ion function and APD sensor
- > Air cleaning for rooms up to 60 m²*) without chemical additives
- > WiFi control – easily in a home wireless¹⁾ or via the Internet on the go
- > Additional functions via smartphone and tablet PC²⁾ by free download a separate app³⁾ via
- > App-controllable: Not only do you receive information on your air quality, you can also control all functions directly via the app.
- > 4-fold filter system:
 - Stage 1: **Prefilter** – for coarse particles such as hair, animal hair, skin particles (washable)
 - Stage 2: **HEPA filter** – for fine particles such as dust, pollen, smoke, nicotine – filters up to 99.95% of the allergens/suspended matters as well as various bacteria and viruses from indoor air
 - Stage 3: **Activated carbon filter** – binds and neutralizes odours such as nicotine smell, food smell, etc.
 - Stage 4: **Catalytic filter** – neutralizes harmful environmental gases such as formaldehyde, benzene, ammonia, nicotine
- > APD sensor (Air pollution detection) – permanent control, colour and digital display of air quality (real time display)
 - green: good / yellow: satisfying / red: inadequate

- > Switchable ion function: for fresh, electrostatically neutral air – The electrical ionisation of the air causes dust particles to become electrostatically charged. This causes them to combine to form larger particles and remain in the HEPA filter more reliably
- > 3 operating modes
 - Sleep mode/energy-saving mode: whisper-quiet operation with dimmed operating panel for minimal power consumption
 - Automatic
 - 4 blower stages
- > Sensor touch operation
- > 12 hours timer / Low noise operation / Child lock
- > Easy filter change due to exchangeable compact filter cartridge
- > Incl. multifunction remote control and batteries (2x 1,5 V AAA)
- > 100–240 V, 50/60 Hz, 0,8 A
(Batteries: 2x zinc-carbon, 7.30 g)

*) The information refers to "average" air quality contamination. Performance data are diminished when product is used with air contaminated with pollen, bacteria or viruses.

¹⁾ 2.4 GHz WLAN (the 5 GHz standard is unsupported)

²⁾ Smartphone and tablet PC not included

³⁾ Apple system requirements: iOS 9.0 or higher;
Android system requirements: Android 4.4 or higher

Art. no.:	Art. EAN:	20" / 40" / HQ container
330 830	4 006 160 308 303	640 / 1280 / 1440
Colour:	PU:	Device (Ø x H):
White	1	Ø 220 x 500 mm



Download
Smart Life App



Download
Smart Life App



2ⁱⁿ
1

PTC ceramic heating element

- Healthy, safe, quiet and efficient heating
- Low dust accumulation
- Quick and effective heating
- Long service life
- Robust and durable



Sensor touch operation



Oscillating (switchable swivel function)



Incl. multifunction remote control



PC-HL 3086	Ceramic fan heater
2 in 1 – Ceramic fan heater and table fan in one	
2 heat settings (1000/1500 watt)	
Digital setting of room temperature (15–40 °C)	



- > 2 in 1 – Ceramic fan heater and table fan in one
- > High-quality PTC ceramic heating element for healthy, safe, quiet and efficient heating
- > Low dust accumulation
- > Quick and effective heating
- > Robust and insensitive due to durable PTC ceramic heating element
- > Removable intake filter
- > Sensor touch control panel
 - LED display (temperature display)
 - Digital setting of room temperature (15–40 °C)
 - 12 hours timer
 - Heating function (1000/1500 watt)
 - Fan function (2 blower stages)
 - Oscillating (switchable swivel function)

- > Incl. infrared remote control (battery included)
- > Secure stand
- > High safety through overheating protection
- > Safety contact switch for fire protection
- > 220–240 V, 50 Hz, 1500 W
(Battery: 1x lithium, 2.40 g)

"This product is only suitable for well isolated rooms or for occasional use."

Art. no.:	Art. EAN:	20" / 40" / HQ container
330 860	4 006 160 308 600	1200 / 2580 / 3050
Colour:	PU:	Device (Ø x H):
White	2	Ø 180 x 360 mm



3 in 1

SLEEP
MODE

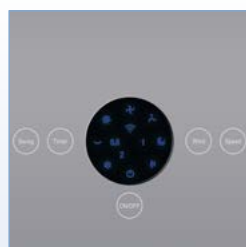
WiFi

Free app³⁾:



Sensor touch
operation

Innovative ventilation technology –
internal radial fans for wingless and
uniform airflow



Multifunction display with
sensor touch control panel



4 smooth-running rollers
or easy transport –
can be used with or without
mounting the castors



Incl. multifunction remote control



PC-LK 3088	Fan / Air cooler
3 in 1 – Air cooler, air humidifier, air cleaner	
2 electronic wind-mode functions	
Innovative ventilation technology	



- > 3 in 1 – Air cooler, air humidifier, air cleaner
- > Innovative ventilation technology – internal radial fans for wingless and uniform airflow
- > WiFi control – easily in a home wireless¹⁾ or via the Internet on the go
- > App control via smartphone and tablet PC²⁾ by free download an own app³⁾ for
- > Individual near use of the appliance also without WiFi/app-control possible
- > 3 blower stages
- > 7.5 hours timer
- > 2 electronic wind-mode functions:
 - **Sleep:** fall-asleep program that decreases the running speed automatically after 30 minutes
 - **Nature:** electronically programmed change of speed levels in irregular time intervals
- > Multifunction display with sensor touch operation
- > Incl. remote control (battery included)
- > 4 smooth-running rollers for easy transport – can be used with or without mounting the castors
- > 360° spin optics (separately switchable)

Art. no.:	Art. EAN:	20" / 40" / HQ container
330 880	4 006 160 308 808	320 / 650 / 720
Colour:	PU:	Device (W x H x D):
White / Titanium	1	325 x 775 x 245 mm

4 006160 308808



- > Incl. external water level indicator
- > **Air cooler:**
 - Pleasant indoor climate for your living and work space
 - Approx. 5 litres water tank, up to 20 hours continuous operation without refilling
 - Incl. 2 cooling batteries to increase the cooling capacity
- > **Air humidifier:**
 - Refreshes and humidifies the air in rooms of up to 20 m² for a pleasant and healthy indoor climate
 - Evaporation volume approx. 250 ml/h
- > **Air cleaner:**
 - For healthier breathing air (reduces the burden of allergens, pollen, dust mites and particles, germs and viruses)
 - Filters dust, fibers and odours from the air
- > 220-240 V, 50 Hz, 80 W
(Battery: 1x lithium, 2.35 g)

¹⁾ 2.4 GHz WLAN (the 5 GHz standard is unsupported)

²⁾ Smartphone and tablet PC not included

³⁾ Apple system requirements: iOS 9.0 or higher; Android system requirements: Android 4.4 or higher

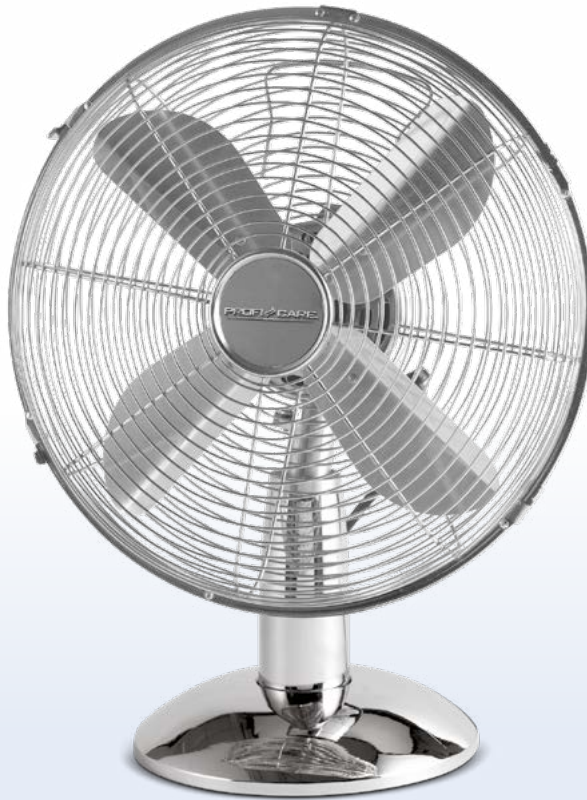
Download
Smart Life App



Download
Smart Life App



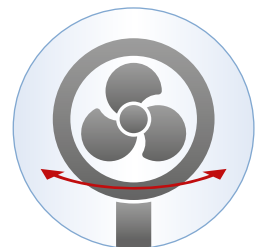
Ø approx. 25 cm



PC-VL 3062 M	Metal fan	
Quiet running		
Ø approx. 25 cm		
Oscillating		



- > High-quality metal housing
- > Oscillating (switchable swivel function)
- > Quiet running
- > Adjustable angle of inclination
- > Metal protection grid
- > Metal base
- > Metal motor housing
- > Secure stand
- > 30 watt
- > Ø approx. 25 cm
- > 3 speed levels
- > 4-level switches (0/1/2/3)
- > 220–240 V, 50 Hz, 30 W




Oscillating (switchable swivel function)

Art. no.:	Art. EAN:	20" / 40" / HQ container
330 620	4 006 160 306 200	1240 / 2560 / 3040
Colour:	PU:	Device (W x H x D):
Stainless steel	2	290 x 400 x 240 mm



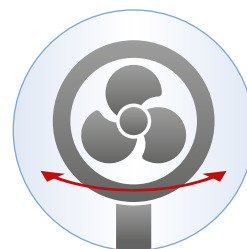
Ø approx. 30 cm



PC-VL 3063 M	Metal fan	
Quiet running		
Ø approx. 30 cm		
Oscillating		



- > High-quality metal housing
- > Oscillating (switchable swivel function)
- > Quiet running
- > Adjustable angle of inclination
- > Metal protection grid
- > Metal base
- > Metal motor housing
- > Secure stand
- > 35 watt
- > Ø approx. 30 cm
- > 3 speed levels
- > 4-level switches (0/1/2/3)
- > 220–240 V, 50 Hz, 35 W




Oscillating (switchable swivel function)

Art. no.:	Art. EAN:	20" / 40" / HQ container
330 630	4 006 160 306 309	980 / 2020 / 2400
Colour:	PU:	Device (W x H x D):
Stainless steel	2	335 x 420 x 250 mm



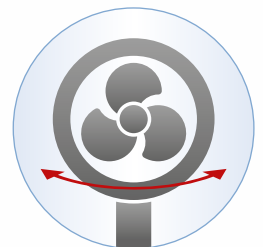
Ø approx. 40 cm



PC-VL 3064 MS	Metal standing fan	
Quiet running		
Ø approx. 40 cm		
Oscillating		



- > High-quality metal housing
- > Oscillating (switchable swivel function)
- > Quiet running
- > Height-adjustable
- > Adjustable angle of inclination
- > Metal protection grid
- > Metal base
- > Metal motor housing
- > Secure stand
- > 50 watt
- > Ø approx. 40 cm
- > 3 speed levels
- > 4-level switches (0/1/2/3)
- > 220–240 V, 50 Hz, 50 W



Oscillating (switchable swivel function)



Art. no.:	Art. EAN:	20" / 40" / HQ container
330 640	4 006 160 306 408	600 / 1260 / 1480
Colour:	PU:	Device (W x H x D):
Stainless steel	1	450 x 1240 x 300 mm




4 006160 306408



Wind machine Ø approx. 40 cm



PC-VL 3065 WM	Wind machine	
Wind machine Ø approx. 40 cm		
Quiet running		
4-level switches		




- > High-quality wind machine in retro design
- > Ø approx. 40 cm
- > Quiet running
- > Adjustable angle of inclination
- > Metal protection grid
- > Metal base
- > Metal motor housing
- > Secure stand
- > 100 watt
- > 3 speed levels
- > 4-level switches (0/1/2/3)
- > Cord storage
- > 220–240 V, 50 Hz, 100 W

Art. no.:	Art. EAN:	20" / 40" / HQ container
330 650	4 006 160 306 507	544 / 1104 / 1265
Colour:	PU:	Device (W x H x D):
Stainless steel	1	510 x 490 x 230 mm



XL wind machine Ø approx. 45 cm



PC-VL 3066 WM	Wind machine	
XL wind machine Ø approx. 45 cm		
Quiet running		
4-level switches		




- > High-quality XL wind machine in retro design
- > Ø approx. 45 cm
- > Quiet running
- > Adjustable angle of inclination
- > Metal protection grid
- > Metal base
- > Metal motor housing
- > Secure stand
- > 100 watt
- > 3 speed levels
- > 4-level switches (0/1/2/3)
- > Cord storage
- > 220–240 V, 50 Hz, 100 W

Art. no.:	Art. EAN:	20" / 40" / HQ container
330 660	4 006 160 306 606	430 / 905 / 1070
Colour:	PU:	Device (W x H x D):
Stainless steel	1	535 x 480 x 190 mm



XL wind machine Ø approx. 50 cm



PC-VL 3067 WM	Wind machine	
XL wind machine Ø approx. 50 cm		
Silent running		
4-level switches		



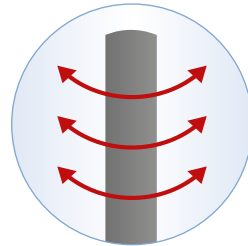
- > High-quality XL wind machine in retro design
- > Ø approx. 50 cm
- > Silent running
- > Adjustable angle of inclination
- > Metal protection grid
- > Metal base
- > Metal motor housing
- > Safe base
- > 120 watt
- > 3 speed levels
- > 4-level switches (0/1/2/3)
- > Cord storage
- > 220–240 V, 50 Hz, 120 W

Art. no.:	Art. EAN:	20" / 40" / HQ container
330 670	4 006 160 306 705	400 / 840 / 996
Colour:	PU:	Device (W x H x D):
Stainless steel	1	570 x 565 x 190 mm





Sensor touch operation



Oscillating (switchable swivel function)



LED display with sensor touch operation



Storage area for the remote control



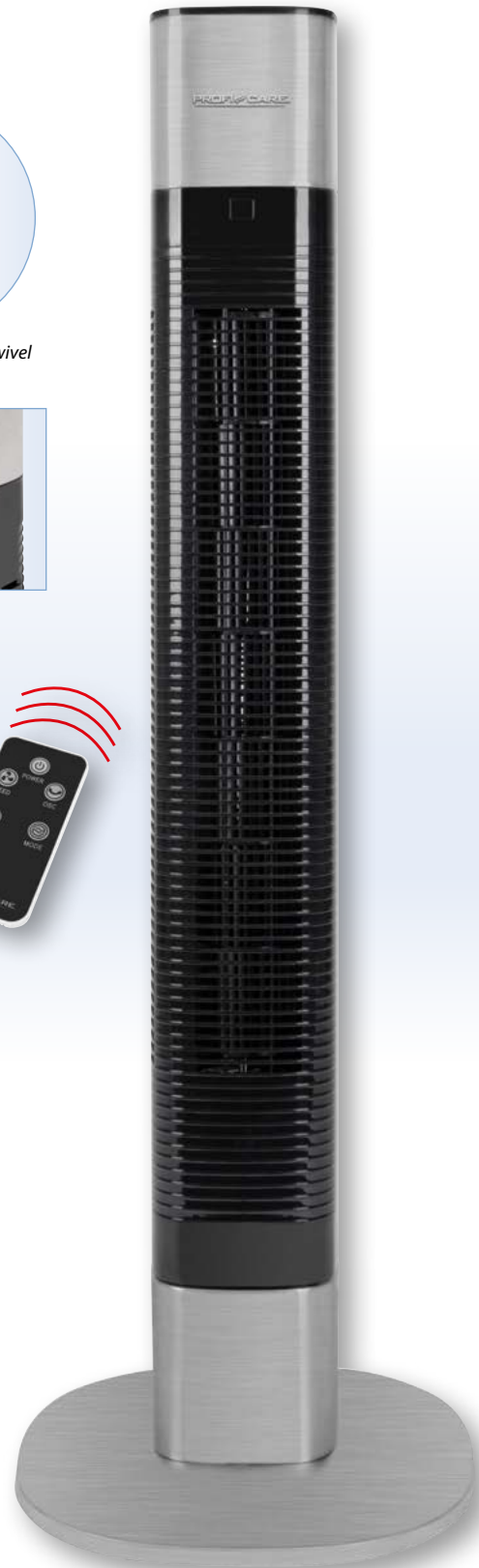
Practical carrying handle



PC-TVL 3068	Tower fan
Stainless steel	
Elektronic 8 h timer	
Particularly quiet, low-noise operation	



- > High-quality tower fan in elegant stainless steel design
- > Long-life professional motor
- > Height: approx. 105 cm
- > 80° oscillating (switchable swivel function)
- > Space-saving
- > Practical carrying handle
- > Particularly quiet, low-noise operation
- > LED display with sensor touch operation
- > Incl. multifunction remote control (battery included)
- > Electronic timer (8 hours)
- > 3 speed levels (High/Mid/Low)
- > 2 electronic wind-mode functions:
 - **Sleep:** Relax in this mode with a varied wind chime
 - **Nature:** Simulates a natural wind movement
- > Storage area for the remote control
- > Stainless steel base: Ø approx. 34 cm
- > Secure stand due to rubberized feet
- > 220–240 V, 50/60 Hz, 50 W
(Battery: 1x lithium, 2.54 g)



Art. no.: 330 680	Art. EAN: 4 006 160 306 804	20" / 40" / HQ container 360 / 786 / 886
Colour: Black / Stainless steel	PU: 1	Device (W x H x D): 340 x 1050 x 340 mm



4 006 160 306 804





Free app³⁾:



Multifunction display with sensor touch operation



Storage area for the remote control



Sensor touch operation



Incl. multifunction remote control



PC-TVL 3090	Tower fan
Stainless steel	
Elektronic 9 h timer	
Particularly quiet, low-noise operation	



- > High-quality tower fan in elegant stainless steel design
- > WiFi control – easily in a home wireless¹⁾ or via the Internet on the go
- > **VOICE CONTROL** via AMAZON ALEXA + GOOGLE ASSISTANT⁴⁾
- > App control via smartphone and tablet PC²⁾ by free download an own app³⁾ for
- > Individual near use of the appliance also without WiFi/app-control possible
- > Long-life professional motor
- > Height: approx. 120 cm
- > 75° oscillating (switchable swivel function)
- > Space-saving
- > Practical carrying handle
- > Particularly quiet, low-noise operation
- > Multifunction display with sensor touch operation
- > Incl. multifunction remote control
- > Electronic timer (9 hours)
- > 6 speed levels
- > 2 electronic wind-mode functions:
 - **Sleep:** Relax in this mode with a varied wind chime
 - **Nature:** Simulates a natural wind movement
- > Storage area for the remote control
- > Stainless steel base: Ø approx. 34 cm
- > Secure stand due to rubberized feet
- > 220–240 V, 50–60 Hz, 45 W

¹⁾ 2.4 GHz WLAN (the 5 GHz standard is unsupported)

²⁾ Smartphone and tablet PC not included

³⁾ Apple system requirements: iOS 9.0 or higher;
Android system requirements: Android 4.4 or higher

⁴⁾ Other services may be available

Art. no.:	Art. EAN:	20" / 40" / HQ container
330 900	4 006 160 309 003	400 / 800 / 900
Colour: Black /	PU:	Device (W x H x D):
Stainless steel	1	340 x 1200 x 340 mm



Download
Smart Life App



Download
Smart Life App



**SLEEP
MODE**

3 in 1

- Ventilation
- Ventilation/ humidification
- Humidification

3 in 1 – Electronic standing fan:

ventilation, ventilation and humidification, humidification

Ventilation in connection with humidification for a better and more efficient room cooling. Air humidifier applicable also separately, e.g. in case of dry indoor air during winter months



Electronic operation



Incl. room humidifier



For improved and more pleasant room cooling

NEW!



PC-VL 3111 LB Standing fan

3-stage air humidification

Oscillating

Incl. multifunction remote control



Fan:

- > Oscillating (switchable swivel function)
- > Quiet running
- > Adjustable angle of inclination
- > Metal protection grid
- > Secure stand
- > Electronic timer: 0.5 h–7.5 h (in steps of 30 minutes)
- > 3 speed levels (High/Mid/Low)
- > Incl. multifunction remote control
- > Ø approx. 40 cm
- > 2 electronic wind-mode functions:
 - **Sleep:** Fall-asleep program, after 30 minutes the running speed automatically decreases
 - **Nature:** Electronically programmed change of the running speed in irregular time periods
- > LED indicator lights

Air humidifier:

- > For a pleasant, healthy room climate
- > Nebulization by ultrasonic technology
- > Large, transparent water tank with a capacity of 3 litres
- > For a continuous operation up to 15 hours
- > Easy filling by a removable water tank
- > Appropriate for rooms up to 60–70 square metres
- > Humidification performance approx. 300 ml/h
- > Adjustable air humidification in 3 steps (High/Mid/Low)
- > Outlet at the metal grid for an optimal steam diffusion
- > Air humidifier applicable also separately
- > 220–240 V, 50 Hz, 85 W



Oscillating (switchable swivel function)

Art. no.:	Art. EAN:	20" / 40" / HQ container
331 110	4 006 160 311 105	369 / 940 / 1030
Colour:	PU:	Device (W x H x D):
Silver/Chrome	1	435 x 1250 x 400 mm



4 006160 311105



SLEEP MODE

3 in 1

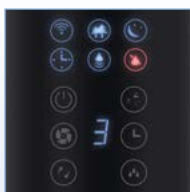
- Conventional fan
- Air humidification
- Combined operation

3 in 1 – Electric standing fan:

Conventional fan, air humidification, combined operation

Ventilation in connection with humidification for a better and more efficient room cooling. Air humidifier applicable also separately, e.g. in case of dry indoor air during winter months

Free app³⁾:



Multifunction display with sensor touch operation



For improved and more pleasant room cooling



PC-VL 3089 LB	Standing fan
3-stage air humidification	
Oscillating	
Voice control via AMAZON ALEXA + GOOGLE ASSISTANT	



Fan and air humidification can be used independently

Fan:

- > Oscillating (switchable swivel function)
- > Quiet running
- > Adjustable angle of inclination
- > Metal protection grid
- > Secure stand
- > Electronic 9 h timer
- > 3 speed levels (High/Mid/Low)
- > Incl. multifunction remote control
- > Ø approx. 40 cm
- > 2 electronic wind-mode functions:
 - **Sleep:** Fall-asleep program, after 30 minutes the running speed automatically decreases
 - **Nature:** Electronically programmed change of the running speed in irregular time periods
- > LED indicator lights

Air humidifier:

- > For a pleasant, healthy room climate
- > Nebulization by ultrasonic technology
- > Large, transparent water tank with a capacity of 2 litres
- > For a continuous operation up to 15 hours
- > Easy filling by a removable water tank

- > Appropriate for rooms up to 60–70 square metres
- > Humidification performance up to 200 ml/h
- > Adjustable air humidification in 3 steps (High/Mid/Low)
- > Outlet at the metal grid for an optimal steam diffusion
- > Air humidifier applicable also separately
- > 220–240 V, 50–60 Hz, 70 W

General:

- > WiFi control – easily in a home wireless¹⁾ or via the Internet on the go
- > App control via smartphone and tablet PC²⁾ by free download an own app³⁾ for
- > **VOICE CONTROL** via AMAZON ALEXA + GOOGLE ASSISTANT⁴⁾
- > Individual near use of the appliance also without WiFi/app-control possible
- > Storage area for the remote control

¹⁾ 2.4 GHz WLAN (5 GHz standard is unsupported)

²⁾ Smartphone and tablet PC not included

³⁾ Apple system requirements:

iOS 9.0 or higher;

Android system requirements: Android 4.4 or higher

⁴⁾ Other services may be available

Art. no.:	Art. EAN:	20" / 40" / HQ container
330 890	4 006 160 308 907	400 / 800 / 90
Colour:	PU:	Device (W x H x D):
Black	1	450 x 1300 x 380 mm



Incl. multifunction remote control



Download
Smart Life App



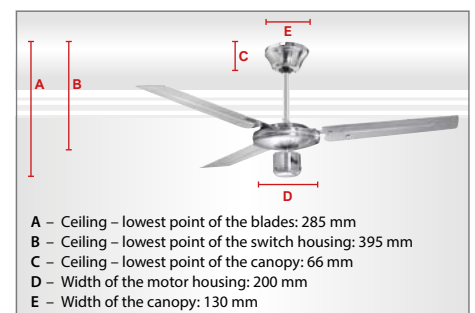
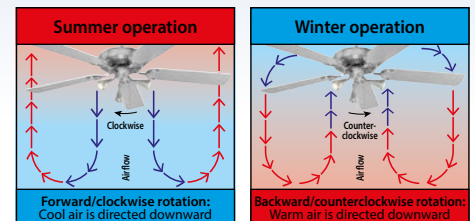
Download
Smart Life App





PC-DVL 3071	Ceiling fan	
Blade span approx. 122 cm (48")		
Reverse function (Summer/winter operation)		
Stainless steel design		

- > 3-blade ceiling fan in attractive stainless steel design
- > Blade span approx. 122 cm (48") provides optimum air circulation
- > Suitable for rooms up to 25 m²
- > 4 power levels (0/1/2/3) – approx. 140 / 250 / 300 rpm
- > Reverse function (Summer/winter operation)
- > Quiet operation
- > Long-life motor
- > Housing and blades made of metal
- > Installation possible on inclined ceilings up to 10°
- > Easy installation with supplied extension rod
- > Height: 39.5 cm; Ø 122 cm
- > 220–240 V, 50 Hz, 60 W



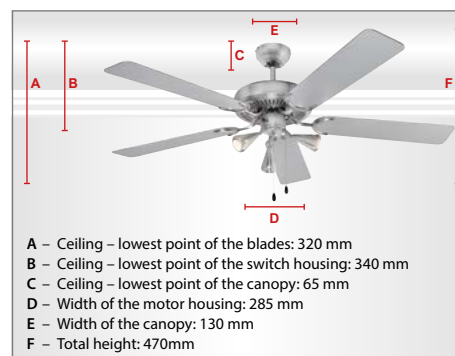
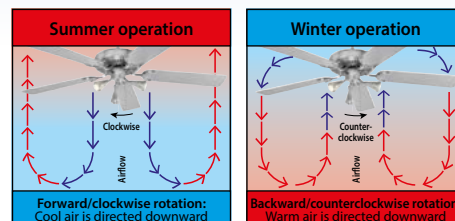
Art. no.:	Art. EAN:	20" / 40" / HQ container
330 710	4 006 160 307 108	930 / 1860 / 2050
Colour:	PU:	Device (W x H x D):
Stainless steel	1	1220 x 380 x 1220 mm





PC-DVL 3078	Ceiling fan	
Blade span approx. 132 cm (52")		
Reverse function (Summer/winter operation)		
Stainless steel design		

- > 5-blade ceiling fan in attractive stainless steel design
- > Blade span approx. 132 cm (52") provides optimum air circulation
- > Suitable for rooms up to 40 m²
- > 4 power levels (0/1/2/3) – approx. 80 / 130 / 170 rpm
- > Reverse function (Summer/winter operation)
- > Incl. illumination – 3 adjustable lamps
– LED illuminants included (3x GU 10 – 5 watt)
- > Quiet operation
- > Long-life motor
- > Housing made of metal
- > Installation possible on inclined ceilings up to 10°
- > Easy installation with supplied extension rod
- > Height: 47.0 cm; Ø 132 cm
- > Total power: 220–240 V, 50/60 Hz, 210 W
- > Fan: 220–240 V, 50 Hz, 60 W
- > Lamp: 220–240 V, 50/60 Hz, 3x 50 W max.



Art. no.:	Art. EAN:	20" / 40" / HQ container
330 780	4 006 160 307 801	645 / 1360 / 1550
Colour:	PU:	Device (W x H x D):
Stainless steel	1	1320 x 470 x 1320 mm





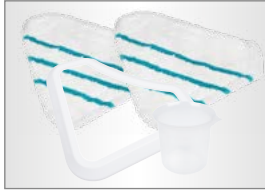
Floor and fabric care

2ⁱⁿ 1

Thoroughly cleaning all hard surfaces using the steam cleaner's high steam output of up to 45 g/min. will result in the elimination of approximately 99 % of viruses¹⁾ (including coronaviruses) as well as all ordinary household bacteria, germs and household mites.



Space-saving storage by folding handle



Suitable for all floor coverings including e.g. laminate, wooden floors, marble, rubber, slate, ceramic and vinyl



Approx. 450 ml water tank (removable)



180° adjustable delta foot allows problem-free wiping beneath items of furniture and thorough cleaning in all corners



PC-DR 3093

Steam mop

1500 watt

Variable steam quantity control

Also ideal for sensitive floors



- > Steam cleaner – cleans, degreases and disinfects at 100 °C without leaving streaks and residues
- > Suitable for all floor coverings including e.g. laminate, wooden floors, marble, rubber, slate, ceramic and vinyl
- > Also ideal for sensitive floors such as parquet²⁾
- > Cleaning of textile subsurfaces also possible, including e.g. carpets, mats and upholstery
- > Variable steam quantity control (15–45 g/min.)
- > Environmentally friendly and hygienic cleaning without the use of chemicals
- > Thoroughly cleaning all hard surfaces using the steam cleaner's high steam output of up to 45 g/min. will result in the elimination of approximately 99 % of viruses¹⁾ (including coronaviruses) as well as all ordinary household bacteria, germs and household mites
- > Ready to operate in approx. 30 seconds
- > Approx. 450 ml water tank removable for easy filling
- > Use for up to 25 minutes on a full tank
- > 180° adjustable delta foot allows problem-free wiping beneath items of furniture and thorough cleaning in all corners
- > Smooth-running carpet gliders
- > Handy fold-down handle for space-saving storage
- > On/off switch
- > Indicator light
- > Long cable (approx. 5.0 m)
- > Cable rewind
- > Fire protection fuse
- > Accessories: 2x microfiber cloth, measuring cup, carpet gliders
- > 220–240 V, 50/60 Hz, 1500 W

¹⁾ Approx. 99 % of corona or influenza viruses (with the exception of the Hepatitis B virus) can be eliminated in approx. 30 seconds on the surface to be cleaned on ordinary, smooth household surfaces

²⁾ Please test on an invisible spot before use.



Art. no.:	Art. EAN:	20" / 40" / HQ container
330 930	4 006 160 309 300	1116 / 2356 / 2660
Colour:	PU:	Device (W x H x D):
White / Anthracite	2	300 x 1140 x 230 mm



4 006160 309300



3ⁱⁿ 1

3 functions:

- Vibration function
- UV disinfection lamp
- Suction mode

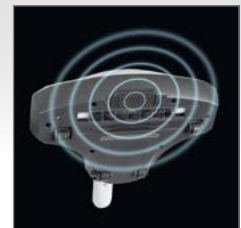

PC-MS 3079
Mite vacuum cleaner

Ideal for vacuuming and disinfecting mattresses, duvets, pillows and much more

Vibration mode and UV disinfection lamp can be activated



- > Powerful mite vacuum cleaner:
 - Vibration function (switchable)
 - UV disinfection lamp (switchable)
 - Suction mode
- > Ideal for vacuuming and disinfecting mattresses, duvets, pillows and much more
- > Reliably removes mites and dust from the surfaces in three steps:
 - Vibration function to loosen impurities in the fibers
 - UV disinfection lamp for sterilization of the surfaces – without chemical additives
 - Suction mode for the effective removal of dust mites, bed bugs, animal hair, pollen and much more
- > With auto-off function: UV light only switches on when it comes into contact with surfaces
- > Vibration mode and UV disinfection lamp can be activated
- > Easy handling thanks to smooth-running rollers
- > Incl. washable HEPA filter – filters even tiny dust particles
- > Dust container removable for easy cleaning
- > 4 m of cable allow for a large radius of action
- > 230 V, 50 Hz, 300 W



Vibration function



UV disinfection lamp



Suction mode

Art. no.:	Art. EAN:	20" / 40" / HQ container
330 790	4 006 160 307 900	1500 / 3000 / 3800
Colour:	PU:	Device (W x H x D):
White	3	245 x 120 x 300 mm



4 006160 307900



2 in 1 – sterilization and cleaning of beds, upholstered furniture and the like. Thanks to UV light, you can effectively and hygienically remove mites, germs, dust, allergens and pollen conveniently / thoroughly / reliably.

High-performance 14,8 V lithium ion battery

2ⁱⁿ 1



Ideal for use in the car



Practical wall mount with
integrated charging function



PC-AKS 3034	Battery vacuum cleaner
2 in 1 – Wet and dry battery vacuum cleaner	
High-performance 14.8 V lithium ion battery	
Practical wall mount with integrated charging function	



Li ION
TECHNOLOGY



Includes 2 long crevice
nozzles e.g. for use in the
car



Brush attachment



Incl. squeegee tool

- > 2 in 1 – High-performance wet and dry battery vacuum cleaner
- > 14.8 V lithium ion battery (2200 mAh)
- > Electronic overcharge protection
- > For vacuuming liquids, crumbs, dust, hair etc.
- > Suitable for all surfaces (e.g. couch, table, car seats)
- > Permanent dust filter (washable)
- > Charge indicator light (LED)
- > Practical wall mount with integrated charging function
- > Battery running time up to 20 minutes
- > Battery charging time approx. 4.5 hours
- > Accessories:
 - Crevice nozzle (8 cm)
 - Extra long crevice nozzle (19 cm)
 - Squeegee tool
 - Brush attachment
 - Wall mount
- > 220–240 V, 50/60 Hz, 14.8 V / rechargeable battery (Li-Ion), 2200 mAh
(Rechargeable battery: 1x lithium-ion, 190.00 g)

Art. no.:	Art. EAN:	20" / 40" / HQ container
330 340	4 006 160 303 407	3036 / 6364 / 8188
Colour:	PU:	Device (W x H x D):
Anthracite/Blue	4	110 x 130 x 410 mm



4 006160 303407



3 in 1 Multifunction stand with integrated charging function



Table mount



Accessories holder



Wall mount



PC-AKS 3102 Battery vacuum cleaner

Multifunction stand with integrated charging function

Lithium ion battery

Electronic power adjustment



- > Modern slim line design
- > 11.1 V lithium ion battery (2000 mAh)
- > Electronic power adjustment (2-steps)
- > Electronic overcharge protection
- > For vacuuming up crumbs, dust, hair, etc.
- > Suitable for all surfaces (e.g. couch, table, car seats)
- > Bagless filter technology – easy emptying by touch of a button
- > HEPA filter (High efficiency particulate air filter)
- > Multifunction LED
 - Power level 1 (green)

- Power level 2 (blue)
- Charging control (red)
- > 3 in 1 Multifunction stand with integrated charging function
- > Battery running time up to 25 minutes
- > Battery charging time approx. 4 hours
- > Accessories:
 - 3 crevice nozzles (7.0 cm + 13.5 cm + 25.5 cm)
 - Brush attachment
 - Multifunction stand
- > 100–240 V, 50/60 Hz, 11.1 V / rechargeable battery (Li-Ion), 2000 mAh
(Rechargeable battery: 1x lithium-ion, 133.00 g)



Incl. 3 crevice nozzles



Brush attachment



Ideal for use in the car

Art. no.:	Art. EAN:	20" / 40" / HQ container
331 020	4 006 160 331 097	3000 / 6000 / 8000
Colour:	PU:	Device (W x H x D):
White/Anthracite	4	65 x 73 x 447 mm

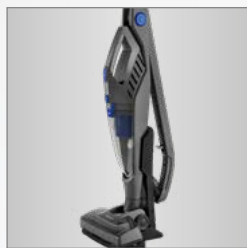


4 006160 331097



High-performance 14.8 V lithium ion battery

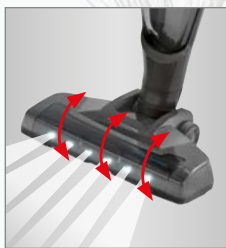
2ⁱⁿ 1



Handy fold-down handle for space-saving storage



From floor vacuum cleaner to hand vacuum cleaner with one click



Electrically rotating floor brush with LED lighting



Practical charging station incl. accessories holder



Back-friendly and flexible cleaning under, e.g. table or couch, thanks to 90° adjustable handle



Comfortable one-hand operation



PC-BS 3035 A	Battery floor vacuum cleaner
2 in 1 – Battery hand and floor vacuum cleaner	
High-performance 14.8 V lithium ion battery	
Practical charging station incl. accessory holder	



Li ION
TECHNOLOGY



- > 2 in 1 – High-performance battery hand and floor vacuum cleaner for cordless cleaning
- > Eco-Cyclon twin spin battery hand and floor vacuum cleaner with 14.8 V lithium ion battery (2200 mAh)
 - Electrically rotating floor brush with LED lighting
 - Incl. crevice nozzle
 - Incl. brush nozzle
- > Electronic overcharge protection
- > Suitable for all surfaces
- > From floor vacuum cleaner to hand vacuum cleaner with one click, suitable for vacuuming of e.g. furniture, cushions, drapes, books, car seats
- > Bagless filter technology – easy emptying by touch of a button + no need to buy expensive replacement vacuum cleaner bags later
- > HEPA filter (High efficiency particulate air filter)
- > Battery running time up to 40 minutes at low level*)
- > Battery charging time approx. 4.5 hours
- > Electronic power adjustment (2-steps)
- > 3-step LED battery level indicator
- > Comfortable one-hand operation
- > Optimum mobility with the double pivot that can be rotated up to 180°
- > Electrically rotating floor brush with LED lighting – for better illumination of dark areas (separately switchable)
- > Back-friendly and flexible cleaning under e.g. table or couch thanks to 90° adjustable handle
- > Practical charging station incl. accessories holder
- > Handy fold-down handle for space-saving storage
- > Accessories: crevice nozzle, brush nozzle, charging station
- > 220–240 V, 50/60 Hz, 14.8 V / rechargeable battery (Li-Ion), 2200 mAh
(Rechargeable battery: 1x lithium-ion, 213.00 g)

*) Without switched on brush

Art. no.:	Art. EAN:	20" / 40" / HQ container
330 350	4 006 160 303 506	938 / 1968 / 2328
Colour:	PU:	Device (W x H x D):
Anthracite/Blue	2	260 x 1150 x 160 mm

(unfolded)



4 006160 303506



Turbo Rotation

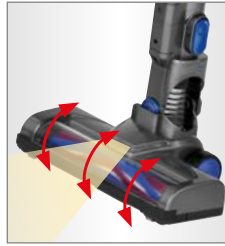
EXTRA SUCTION POWER
through electrically rotating
floor brush

High-performance 22.2 V lithium ion battery

2ⁱⁿ 1



From floor vacuum cleaner to hand vacuum cleaner with one click



Electrically rotating floor brush with LED lighting



Incl. special brush for cushions & textiles



Incl. extra long crevice nozzle (25 cm) and 2 in 1 – combined cushion/brush nozzle



Practical accessories holder right on the suction tube – accessories always close at hand

CLICK
HERE

PC-BS 3036 A Battery floor vacuum cleaner

2 in 1 – Battery hand and floor vacuum cleaner

High-performance 22.2 V lithium ion battery

Practical accessories holder right on the suction pipe



Li ION
TECHNOLOGY



- > 2 in 1 – High-performance battery hand and floor vacuum cleaner for cordless cleaning
- > Eco-Cyclon twin spin battery hand and floor vacuum cleaner with 22.2 V lithium ion battery (2200 mAh)
 - Electrically rotating floor brush with LED lighting
 - Incl. extra long crevice nozzle (25 cm)
 - 2 in 1 – combined cushion/brush nozzle
 - Incl. special brush for cushions & textiles
- > Electronic overcharge protection
- > Suitable for all surfaces
- > From floor vacuum cleaner to hand vacuum cleaner with one click, suitable for vacuuming of e.g. furniture, cushions, drapes, books, car seats
- > Bagless filter technology – easy emptying by touch of a button + no need to buy expensive replacement vacuum cleaner bags later
- > HEPA filter (High efficiency particulate air filter)
- > Battery running time up to 40 minutes
- > Battery charging time approx. 5 hours
- > Aluminium suction tube
- > Soft touch handle
- > Electronic power adjustment (2-steps)
- > Integrated economy mode for longer battery life
- > 4-step LED battery level indicator
- > Optimum mobility with the double pivot that can be rotated up to 180°
- > Electrically rotating floor brush with LED lighting – for better illumination of dark areas
- > Incl. special brush for cushions & textiles
- > Practical accessories holder right on the suction pipe – accessories always close at hand
- > Incl. wall mount for space-saving storage
- > Accessories: extra long crevice nozzle, cushion/brush nozzle, special brush, wall mount
- > 220–240 V, 50/60 Hz, 22.2 V / rechargeable battery (Li-Ion), 2200 mAh
(Rechargeable battery: 1x lithium-ion/lithium-polymer, 384.30 g)

Art. no.:	Art. EAN:	20" / 40" / HQ container
330 360	4 006 160 303 605	740 / 1600 / 1830
Colour:	PU:	Device (W x H x D):
Anthracite/Blue	1	300 x 225 x 120 mm



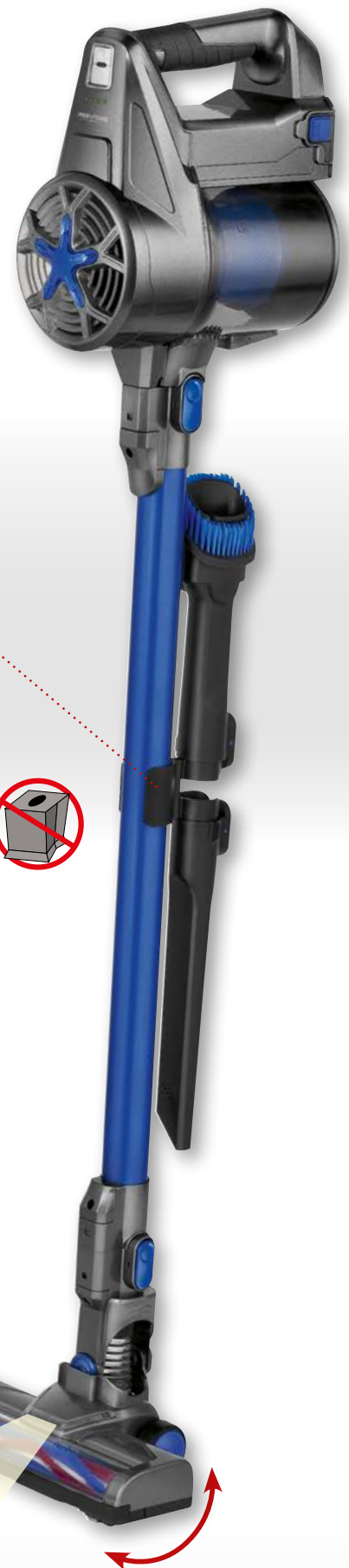
4 006160 303605



180°
LED lighting

Turbo Rotation

EXTRA SUCTION POWER
through electrically rotating
floor brush



Powerful 25.55 lithium ion battery

2ⁱⁿ1



From floor vacuum cleaner to hand vacuum cleaner with one click



Electrically rotating floor brush with LED lighting

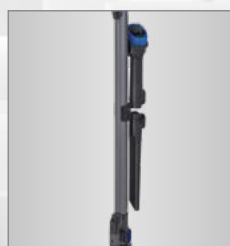


Incl. flexible and expandable suction hose



Incl. extra long crevice nozzle & 2 in 1 – combined cushion/brush nozzle

Li ION TECHNOLOGY



Practical accessories holder right on the suction tube – accessories always close at hand

CLICK HERE

PC-BS 3085 A	Battery floor vacuum cleaner
2 in 1 – Battery hand and floor vacuum cleaner	
High-performance 25.55 V lithium ion battery	
Practical wall mount with integrated charging function	



- > 2 in 1 – High-performance battery hand and floor vacuum cleaner for cordless cleaning
- > Eco-Cyclon twin spin battery hand and floor vacuum cleaner with 25.55 V lithium ion battery (2600 mAh)
 - Electrically rotating floor brush with LED lighting
 - Incl. extra long crevice nozzle (25 cm)
 - 2 in 1 – combined cushion/brush nozzle
 - Incl. flexible and expandable suction hose (approx. 40–150 cm), ideal for cars, cupboards and hard-to-access areas
- > Electronic overcharge protection
- > Suitable for all surfaces
- > From floor vacuum cleaner to hand vacuum cleaner with one click, suitable for vacuuming of e.g. furniture, cushions, drapes, books, car seats
- > Bagless stainless steel filter technology – easy emptying by touch of a button + no need to buy expensive replacement vacuum cleaner bags later
- > Battery running time up to 40 minutes
- > Battery charging time approx. 4.5 hours
- > Aluminium suction tube
- > Electronic power adjustment (2-steps)
- > Integrated economy mode for longer battery life
- > 4-step LED battery level indicator
- > Optimum mobility with the double pivot that can be rotated up to 180°
- > Electrically rotating floor brush with LED lighting – for better illumination of dark areas
- > Practical accessories holder right on the suction tube – accessories always close at hand
- > Practical wall mount with integrated charging function
- > Accessories: extra long crevice nozzle, cushion/brush nozzle, flexible/expandable suction hose, wall mount
- > 220–240 V, 50/60 Hz, 25.55 V / rechargeable battery (Li-Ion), 2600 mAh
(Rechargeable battery: 1x lithium-ion/lithium-polymer, 336.00 g)

Art. no.:	Art. EAN:	20" / 40" / HQ container
330 850	4 006 160 308 501	740 / 1600 / 1800
Colour:	PU:	Device (W x H x D):
Anthracyte/Blue	1	400 x 240 x 120 mm

(Suction tube: 68 cm)



4 006160 308501



180°
LED lighting

Turbo Rotation

EXTRA SUCTION POWER
through electrically rotating
floor brush

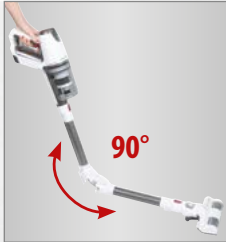
High-performance lithium ion battery with extra strong 29.6 V

2ⁱⁿ1

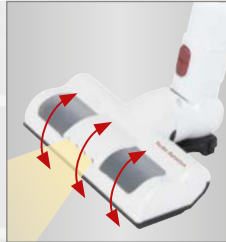
Li ION TECHNOLOGY



From floor vacuum cleaner to hand vacuum cleaner with one click



Back-friendly and flexible cleaning under e.g. table or couch thanks to 90° adjustable tube



Electrically rotating floor brush with LED lighting



Incl. special brush for cushions & textiles



Incl. 3 in 1 – combined extra long crevice/brush/cushion nozzle



Practical wall mount with integrated charging function



PC-BS 3037 A Battery floor vacuum cleaner

2 in 1 – Battery hand and floor vacuum cleaner

High-performance lithium ion battery with extra strong 29.6 V

Practical wall mount with integrated charging function



- > 2 in 1 – High-performance battery hand and floor vacuum cleaner for cordless cleaning
- > Eco-Cyclon twin spin battery hand and floor vacuum cleaner with high-performance 29.6 V lithium ion battery (2200 mAh)
 - Electrically rotating floor brush with LED lighting
 - 3 in 1 – combined extra long crevice/brush/cushion nozzle (25 cm)
 - Incl. special brush for cushions & textiles
- > Electronic overcharge protection
- > Suitable for all surfaces
- > From floor vacuum cleaner to hand vacuum cleaner with one click, suitable for vacuuming of e.g. furniture, cushions, drapes, books, car seats
- > Bagless stainless steel filter technology – no need to buy expensive replacement vacuum cleaner bags later
- > High-performance lithium ion battery with extra strong 29.6 V (2200 mAh)
- > Battery running time up to 35 minutes
- > Battery charging time approx. 4.5 hours
- > Aluminium suction tube
- > Electronic power adjustment (2-steps)
- > Integrated turbo function for maximum cleaning performance
- > 3-step LED battery level indicator
- > Optimum mobility with the double pivot that can be rotated up to 180°
- > Electrically rotating floor brush with LED lighting – for better illumination of dark areas
- > Incl. special brush for cushions & textiles
- > Back-friendly and flexible cleaning under e.g. table or couch thanks to 90° adjustable tube
- > Practical wall mount with integrated charging function
- > Accessories: 3 in 1 – combined extra long crevice/brush/cushion nozzle, special brush, wall mount
- > 220–240 V, 50/60 Hz, 29.6 V / rechargeable battery (Li-Ion), 2200 mAh
(Rechargeable battery: 1x lithium-ion/lithium-polymer, 494.44 g)



LED lighting

Turbo Rotation

EXTRA SUCTION POWER
through electrically rotating
floor brush

Art. no.:	Art. EAN:	20" / 40" / HQ container
330 370	4 006 160 303 704	825 / 1650 / 1970
Colour:	PU:	Device (W x H x D):
White/Titanium	1	380 x 210 x 100 mm

(Suction tube: 74 cm)



4 006160 303704



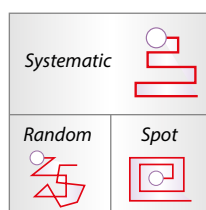
High-performance 14.4 V battery



PC-BSR 3042	Robot vacuum cleaner
High-quality robot vacuum cleaner	
High-performance 14.4 V battery	
Suitable for all hard floor coverings and short-pile carpets	



- > High-quality robot vacuum cleaner with rotary lateral brushes
- > Independently cleans all rooms and removes e.g. dirt, dust, crumbs and pet hair
- > Suitable for all hard floor coverings and short-pile carpets
- > Rubberized, spring-mounted castors (ideal for sensitive floors)
- > Battery: 14.4 V, 1500 mAh
- > 3 cleaning programs:
 - Random
 - Spot
 - Systematic
- > Incl. 2 extra-long lateral brushes for especially thorough cleaning in hard-to-reach corners and angles
- > Extra shallow dimensions (just 7.5 cm tall), therefore ideal for cleaning under furniture
- > Easily removable dirt container for fast cleaning
- > Incl. HEPA filter (High efficiency particulate air filter)
- > Battery running time up to 90 minutes
- > Battery charging time approx. 5 hours
- > Automatic staircase detection via sensor technology (infra red sensors)
- > Mechanical protective barrier for sensitive furniture and door frames
- > Low-noise (approx. 61 dB)
- > Incl. multifunction remote control
- > Accessories: 2 additional lateral brushes, charging power supply, remote control
- > 100–240 V, 50/60 Hz, 14,4 V / rechargeable battery (NiMH): 1500 mAh
(Rechargeable battery: 1x nickel metal hydride, 312.00 g)



3 cleaning programs



Incl. multifunction remote control



Incl. HEPA filter – easily removable container

Art. no.:	Art. EAN:	20" / 40" / HQ container
330 420	4 006 160 304 206	1520 / 3340 / 3704
Colour:	PU:	Device (W x H x D):
White	1	Ø 290 mm; Height 75 mm



4 006160 304206



High-performance
14.8 V lithium ion battery



VOICE CONTROL

VOICE CONTROL via
AMAZON ALEXA and
GOOGLE ASSISTANT²⁾

Free App:



- 2D card functioning/
live tracking
- Remote control function
- Set up a cleaning schedule
(day, time, frequency)
- Choice of cleaning
programs
- Battery status display
in %

Turbo Rotation

EXTRA SUCTION POWER
through electrically rotating
floor brush



PC-BSR 3043

Robot vacuum cleaner

High-quality robot vacuum cleaner

High-performance 14.8 V lithium ion battery

Suitable for hard floor coverings and short-pile carpets



- > High-quality robot vacuum cleaner with rotary floor and lateral brushes
- > Independently cleans all rooms and removes e.g. dirt, dust, crumbs and pet hair
- > Suitable for all hard floor coverings and short-pile carpets
- > Rubberized, spring-mounted castors (ideal for sensitive floors)
- > High-performance lithium ion battery 14.8 V, 2600 mAh
- > 4 cleaning programs:
 - Auto, spot, corners, systematic (gyroscope-controlled)
- > Gyroscope-controlled (independent orientation for faster and more efficient cleaning results)
- > Incl. 2 extra-long lateral brushes for especially thorough cleaning in hard-to-reach corners and angles
- > Combined cleaning system with floor brush and rubber extractors
- > Extra shallow dimensions (just 7.5 cm tall), therefore ideal for cleaning under furniture
- > Easily removable large 400 ml dirt container for fast cleaning
- > Incl. HEPA filter (High efficiency particulate air filter)
- > Battery running time up to 120 min. / Battery charging time approx. 3 h
- > Auto return function: Following completion of the program and at low battery, the robot automatically returns to the charging station
- > Auto resume – following recharging, the robot continues cleaning at the last position cleaned

Art. no.:	Art. EAN:	20" / 40" / HQ container
330 430	4 006 160 304 305	1285 / 2570 / 2900
Colour:	PU:	Device (W x H x D):
Black	1	Ø 300 mm; Height 75 mm



4 006160 304305



Li ION
TECHNOLOGY

- > Automatic staircase detection via sensor technology (infra red sensors)
- > Automatic obstacle detection via sensor technology (infra red sensors)
- > Additional, mechanical protective barrier for sensitive furniture and door frames
- > Low-noise (approx. 61 dB)
- > High-quality LED display with sensor touch operation
- > Incl. multifunction remote control
 - Timer function / Individual control / Recall to charging station
- > Accessories: 2 additional lateral brushes and 1 additional HEPA filter, charging station with charging power supply, remote control
- > 100–240 V, 50/60 Hz, 14.8 V / rechargeable battery (Li-Ion): 2600 mAh
(Batteries: 2x zinc-carbon, 7.30 g / (Rechargeable battery: 1x lithium-ion, 202.00 g)

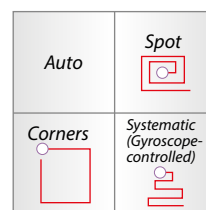
¹⁾ 2.4 GHz WLAN (the 5 GHz standard is unsupported)

²⁾ Smartphone and tablet PC not included

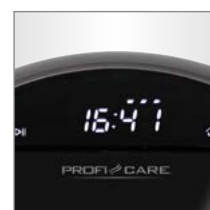
³⁾ Apple system requirements: iOS 9.0 or higher;
Android system requirements: Android 4.4 or higher



Auto return function



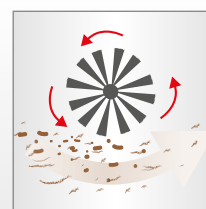
4 cleaning programs



High-quality LED display
with sensor touch operation



Incl. multifunction
remote control



Rotary floor brushes



Incl. HEPA filter – easily
removable container

High-performance
14.4 V lithium ion battery

Li ION
TECHNOLOGY



Free App:



- 2D card functioning/ live tracking
- Remote control function
- Set up a cleaning schedule (day, time, frequency)
- Choice of cleaning programs
- Battery status display in %



NEW!



PC-BSR 3108

Robot vacuum cleaner incl. wiping function

Inklusive Wischfunktion

Leistungsstarker 14,4 V Lithium-Ionen-Akku

Geeignet für Hartbodenbeläge und kurzflorige Teppiche



Turbo Rotation

EXTRA SUCTION POWER
through electrically rotating
floor brush

2x cleaning fleece for
integrated wiping function

- > 3in1 High-quality robot vacuum cleaner & wiping function with rotating floor and side brushes
- > Independently cleans and wipes all rooms and removes e.g. dirt, dust, crumbs and pet hair
- > Suitable for all hard floor coverings and short-pile carpets
- > Rubberized, spring-mounted castors (ideal for sensitive floors)
- > High-performance lithium ion battery 14.4 V, 2600 mAh
- > 3 cleaning programs: Spot, corners, systematic (gyroscope-controlled)
- > Gyroscope-controlled (independent orientation for faster and more efficient cleaning results)
- > Incl. 2 extra-long lateral brushes for especially thorough cleaning in hard-to-reach corners and angles
- > Combined cleaning system with rotating floor brush and wiping function
- > Extra shallow dimensions (just 8.5 cm tall), therefore ideal for cleaning under furniture
- > Easily removable large 500 ml dirt container for fast cleaning
- > Water tank approx. 120 ml
- > Incl. HEPA filter (High efficiency particulate air filter)
- > Battery running time up to 120 min.
- > Battery charging time approx. 6 h
- > Auto return function: Following completion of the program and at low battery, the robot automatically returns to the charging station
- > Automatic staircase detection via sensor technology (infra red sensors)
- > Automatic obstacle detection via sensor technology (infra red sensors)

- > Additional, mechanical protective barrier for sensitive furniture and door frames
- > Low-noise (approx. 61 dB)
- > Incl. multifunction remote control*)
 - Timer function
 - Suction power regulation
 - Individual control
 - Recall to charging station
- > Accessories: 4x lateral brushes, 2x HEPA filter, 2x cleaning fleece, charging station with charging power supply, remote control
- > 100–240 V, 50/60 Hz, 14.4 V / rechargeable battery (Li-Ion): 2600 mAh
(Rechargeable battery: 1x lithium-ion, 202.00 g)

¹⁾2.4 GHz WLAN (the 5 GHz standard is unsupported)

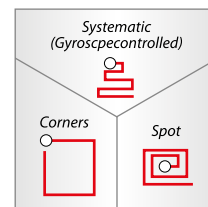
²⁾Smartphone and tablet PC not included

³⁾Apple system requirements: iOS 9.0 or higher;
Android system requirements: Android 4.4 or higher

⁴⁾Batteries not included



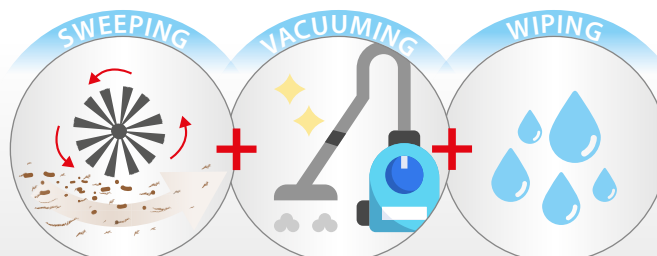
Integrated wiping
function



3 cleaning programs



Incl. multifunction remote
control & app-control



3in1

Sweeping, vacuuming, wiping

Art. no.:	Art. EAN:	20" / 40" / HQ container
331 080	4 006 160 310 801	1358 / 2800 / 3163
Colour:	PU:	Device (W x H x D):
black	1	Ø 300 mm; Height 85 mm



4 006160 310801





CLICK
HERE

PC-BS 3110	Floor vacuum cleaner
Energy-saving 700 watt	
Stainless steel telescopic tube (height-adjustable)	
Electronic power adjustment	



Floor brush (switchable)



Hard floor brush



Combined
brush/crevice nozzle

- > Eco-Cyclon twin spin floor vacuum cleaner with energy-saving 700 watt
 - Switchable floor brush
 - Incl. hard floor brush for gentle cleaning of parquet flooring, tiles etc.
 - Combined brush/crevice nozzle
- > Bagless filter technology - no need to buy expensive replacement vacuum cleaner bags later
- > Stainless steel telescopic tube (height-adjustable)
- > Electronic power adjustment (stepless)
- > 4-fold microfilter system for efficient dust filtering
- > HEPA filter (High efficiency particulate air filter)
- > Practical carrying handle
- > Automatic cable rewind
- > Space-saving parking aid
- > Accessories: combined brush/crevice nozzle, hard floor brush
- > 220-240 V, 50/60 Hz, 700 W

Art. no.:	Art. EAN:	20" / 40" / HQ container
331 100	4 006 160 331 103	860 / 1720 / 1940
Colour:	PU:	Device (W x H x D):
White/Titanium	1	335 x 280 x 237 mm



4 006160 331103



**PC-BS 3040****Floor vacuum cleaner**

Energy-saving 700 watt

Stainless steel telescopic tube (height-adjustable)

Electronic power adjustment



Turbo brush



Floor brush (switchable)



Hard floor brush

Combined
brush/crevice nozzle

- > Eco-Cyclon twin spin floor vacuum cleaner with energy-saving 700 watt
 - Switchable floor brush
 - Incl. hard floor brush for gentle cleaning of parquet flooring, tiles etc.
 - Incl. turbo brush for easy removal for example of animal hair and fluff – ideal for pet owners
 - Combined brush/crevice nozzle
- > Bagless filter technology – no need to buy expensive replacement vacuum cleaner bags later
- > Stainless steel telescopic tube (height-adjustable, 55–91 cm)
- > Electronic power adjustment (stepless)
- > Extra-large operation range (approx. 8.30 m) – problem-free access to stairs and corners
- > 4-fold microfilter system for efficient dust filtering
- > HEPA filter (High efficiency particulate air filter)
- > Practical carrying handle
- > Automatic cable rewind
- > Space-saving parking aid
- > Accessories: combined brush/crevice nozzle, hard floor brush, turbo brush
- > 220–240 V, 50/60 Hz, 700 W

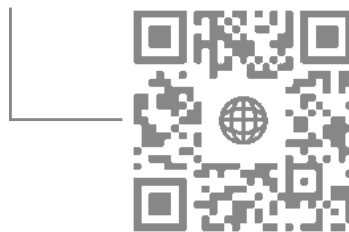
Art. no.:	Art. EAN:	20" / 40" / HQ container
330 400	4 006 160 304 008	540 / 1080 / 1325
Colour:	PU:	Device (W x H x D):
Anthracyte/Blue	1	250 x 325 x 360 mm



4 006160 304008



Company presentation



ProfiCare

Industriering Ost 40 | D-47906 Kempen/Germany | www.proficare-germany.de
Phone +49.(0)2152.2006-0 | Fax +49.(0)2152.2006-1999 | www.proficare-germany.de/service