



**AMT**  
GASTROGUSS

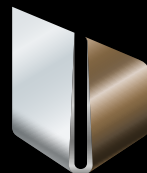
THE  
**"WORLD'S  
BEST PAN"**

\* "The world's best pan" according to VKD,  
largest German Chefs Association

**INNOVATIVE COOKWARE**  
product catalog 2022

# “The World’s ——— ————— Best\* Pan”

We dedicate ourselves to design and produce a pan for every application.



german  
brand  
award  
'17  
winner



TESTMAGAZIN-URTEIL	
AMT Gastroguss 528 28cm	
SEHR GUT	92,1%
Anhaltbeschriftete Platte im Onlinetest www.dtm-testmagazin.de	
02/2015	



GERMAN  
DESIGN  
AWARD  
WINNER  
2018



GERMAN  
INNO  
VATION  
AWARD '20  
WINNER

\*“The World’s Best Pan” according to VKD, largest German Chefs Association





# 01

---

## High-quality materials

AMT is one of the fastest growing cookware producers in the Europe. Our products are widely known in almost 100 countries around the world. Our company is built on the foundations of old german traditions, going back to 1904.

The company has always been in the reliable hands of the family Möhl, now leading into the 3rd generation. We are very proud of our outstanding quality and our numerous awards that confirm that we are meeting the needs of proud culinary artists all over the world, no matter if at home for health conscious families or in the professional gastronomy.



# Precise handmade craftsmanship

---

Only for the last 10 years, our sales growth is estimated at around 15% each year.

The combination of perfect marketing material, customized individually to international needs, paired with an extremely high margin for our business partners, resulted in steady and significant revenue growth.

# 02





# 03

## **Refined** for excellent haptics

---

In our company we combine tradition, solid craftsmanship, modern technology and expertise together with top-grade materials to guarantee our customers premium quality.

# HISTORY SPECIFICALLY FOR MAKING COOKING STORY

## 1904 FOUNDRY

R. Neufeld receives the approval of the Imperial Construction Inspectors to build an aluminum foundry in the Recken Street in Luedenscheid, Germany.

## 1938 A.S. OHG

Albert Schiffer takes over the Neufeld foundry and establishes Albert Schiffer OHG, where sand and gravity die-casted products from aluminum are produced.

## 1964 COOKWARE

The beginning of the production of casted aluminum cookware.

## 1984 H. MÖHL

Helmut Möhl takes over the company Albert Schiffer.

## 1993 COMPANY

Foundation of the company Metallguss Möhl GmbH by Harald Möhl, since then production on half-automatic hydraulic casting machines.

## 1995 WERDOHL

Acquisition of coating machinery.

Takeover of the foundry Honsel in Werdohl, Germany by Helmut Möhl. Albert Schiffer GmbH moves to Werdohl.

Production of the first induction cookware.

## 1996 AMT CO.

The company AMT Alumetall-Gießtechnik GmbH is founded in Lüdenscheid by Helmut Möhl.

## 1998 GROWTH

Acquisition of the first CNC-Machines for the purpose of tool construction for Metallguss Möhl GmbH. Construction 3D Solid Works and Mastercam.

## 1999 START

Acquisition of the foundry Colsman in Werdohl, foundation of Alutec-Möhl GmbH by Harald und Helmut Möhl.

Start of low-pressure die-casting production.

Start of series production on CNC-Machining centres.

Start of equipping AMT cookware with detachable handles.

## 2000 DIE-CASTING

Takeover of Gebr. Müller GmbH & Co. KG by Harald Möhl.

Start of pressure die-casting production.

Takeover of the gravity die-casting foundry Gustav Schmale in Luedenscheid by Harald Möhl.

220 employees.

## 2004 GERMANY

The beginning of the cooperation with the German Chefs Association and the German Culinary Team to develop new and innovative cookware.

47 of 51 internationally renowned national culinary teams use our products at the culinary olympics.

Acquisition of fully automatic coating machinery and a plasma coating system.

## 2006 FUSION

Fusion of Metallguss Möhl GmbH and Albert Schiffer Nachf. GmbH in Alutec-Möhl GmbH as acquiring corporation.

290 employees.

## 2007 EXTENSION

Upgrading coating machinery systems to full automatic robot operation.

## 2009 PATENTS

Acquisition of diverse patents, utility models and trademark rights.

## 2011 LASER

Acquisition of the first laser cutting machine.

380 employees.

## 2012 BEST OF

PLUS X Award for the "Best product of the year".

## 2013 QUALITY

Kitchen Innovation prize for our One-hand Universal Pressure Cooker for functionality, design and ecological sustainability.

PLUS X Award for the "Best product of the year".

Kitchen Innovation prize for the silicone-covered steamer for functionality and material quality.

Acquisition of a professional thermal camera to optimise heating-up time and heat transmission, subsequently we received the certification "Energy Efficient products" from the TÜV Rheinland, Germany.

## 2014 DESIGN

Kitchen Innovation prize for the AMT system "Waterless Cooking" for functionality, product usage and design.

Kitchen Innovation prize: Favourite Brand Gold voted by consumers.

## 2015 ETM

Kitchen Innovation prize - special mention - for our pan E285BBQ for functionality, material and innovation.

PLUS X Award for functionality.

Independent ETM Testmagazin granted us Grade: Excellent For the non-stick qualities.

KÜCHE Bronze Award for the BBQ GN 1/1 + 2/3, category: Kitchen accessories.

## 2016 WACS

The World Association of Chefs' Societies recommends our products because of the outstanding cooking results.

German Brand Award winner - Industry Excellence in Branding.

## 2017 AWARDS

KÜCHE Silver Award for our Pressure Cooker Set (4, 5, 5,5 and 7 liter), category: Kitchen Technic.

German Brand Award winner - Industry Excellence in Branding.

Kitchen Innovation prize for our pans with patented detachable handles for functionality, product usage, and material quality.

## 2018 EXCELLENT

Catering Star bronze for the GN 1/1 multipurpose baking tray item nr. 5333WP.

German Design Award for the GN 2/3 BBQ tray item nr. I-23733G-BBQ, category: Excellent Product Design.

Kitchen Innovation prize for new induction bottom for functionality, product benefit and design, category: Consumers' Choice.

Kitchen Innovation prize for our GN 1/1 multipurpose baking tray item nr. 5333WP for functionality, product benefit and material quality, category: Cooking and kitchen utensils - Recommended by chefs "Golden Award" - Best of the Best.



# Thank you for your trust in our capabilities!

Your interest in AMT products is the right choice for you, your family, our environment and your wallet!

Perfection has always been our mission, striving to provide you with a first-class cookware that saves time, energy and money to ensure that you have an active lifestyle.

Star Chefs around the world profit daily from the excellent quality of our products. In constant and close cooperation with the German Chefs Association and the German National Culinary Team, together we have mutually designed and developed many new and innovative products, which you will find throughout this catalogue.

We combine tradition, solid craftsmanship, modern technology and our expertise together with top-grade material to guarantee our customers unique and premium quality. You can also achieve excellent culinary results like the professional Chefs by using AMT cookware.

Help us to help our environment! Our cookware is the first of its kind to receive the energy efficiency certification, class A. Thanks to aluminum being one of the best heat conductors and in combination with our 9 mm, warp free, casted base, you are gaining cookware with excellent heat transmission. Furthermore, the heat is stored in the base for a longer period of time, which allows you to use less energy and saves money!

AMT cookware will give you the tools for a new culinary experience.

Dipl.-Ing. Harald Möhl, CEO  
Alumetall-Gießtechnik GmbH

*Harald  
Möhl*





# QUALITY TESTING — WITHOUT COMPROMISE!

We meet all standards and guidelines, receive the most important prizes and every year we are honored for our innovations.

The conventional quality tests are essential, but our quality tests go beyond essential!

Having searched for quality tests without compromise, we found what we were looking for in the deepest forests of Eastern Europe – and the results are convincing.

# OUR DESIGN SOLUTIONS **DETACHABLE — HANDLE**



Convenient Ergonomic Design

Your Benefits at a Glance:

- **Innovative Product**
- **No Oven Gloves Necessary**
- **Based on AMT-Patent 2586346**
- **Space Saving**
- **Childproof cooking**



# 46/53

Culinary National Teams  
cook with our products

At the “Culinary Olympics” IKA 2020, 46 of 53 of the international culinary teams that qualified for the competition cooked with AMT cookware. Together with the German National Culinary Team we developed cookware for the highest expectations.

The expert knowledge of the Chefs and our product tests flow directly into the development of our products.



**THE BEST CHEFS USE OUR PRODUCTS**



The World Association of Chefs Societies with members from 106 countries recommends our products





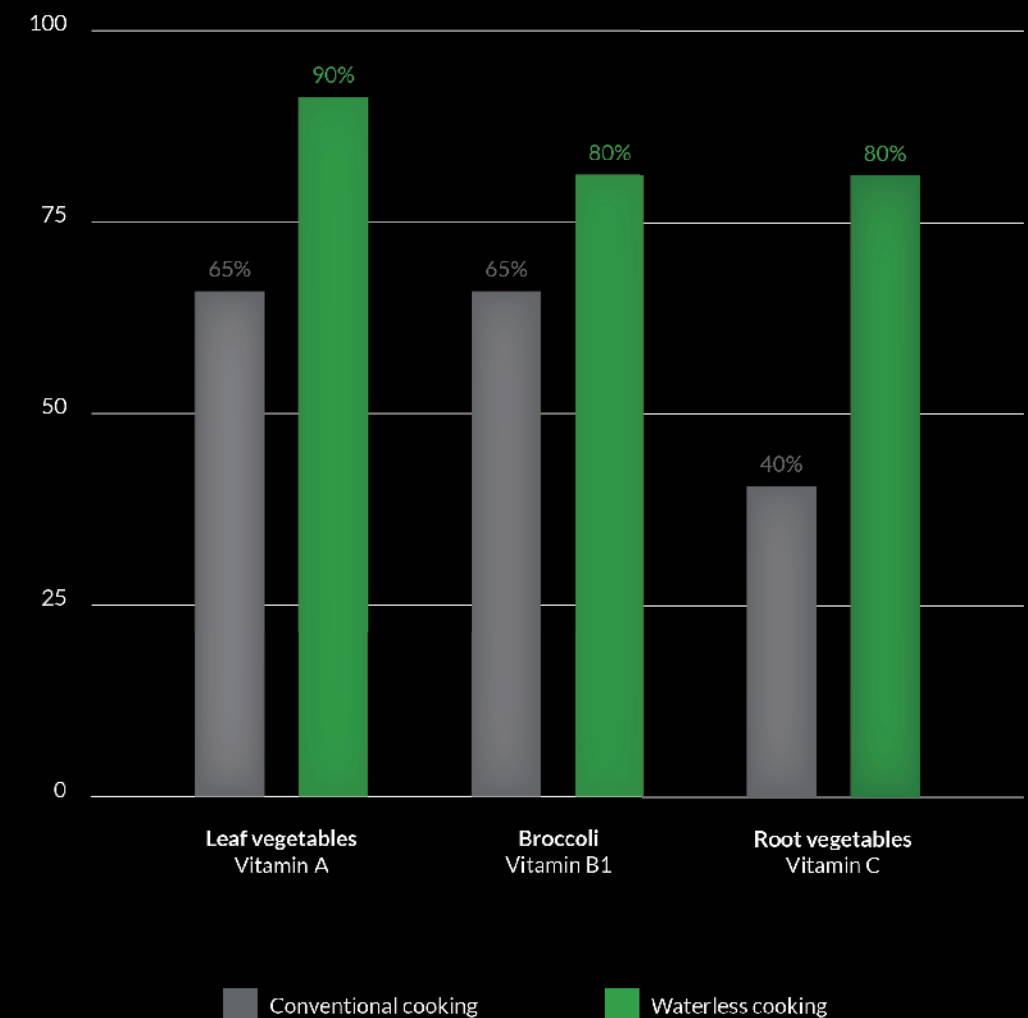




# WATERLESS — — COOKING



## PREPARE WHOLESOME MEALS WITH THE AMT WATERLESS COOKING SYSTEM



Prepare wholesome and nutritious meals in all their full natural colours and original crispy texture.

What seems to be impossible has been made possible with the innovative AMT products designed, developed and tested together with the Nestlé Professional nutritionists and the renowned Chefs of the German National Culinary team.

Short heating and cooking times and at the same time total control with help of the standard fitting thermometer - with the Waterless Sets from AMT you leave nothing to chance.



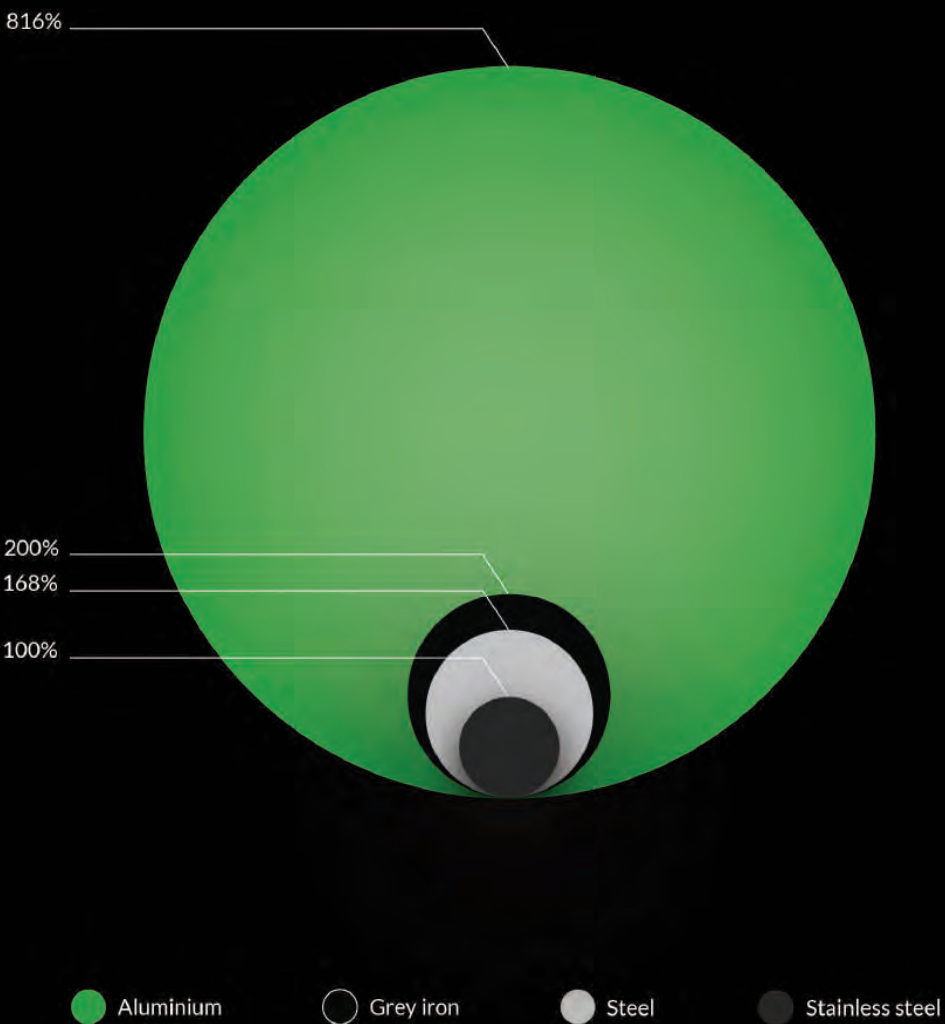


FOR THE ENVIRONMENT

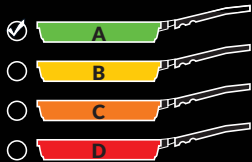
FOR YOUR WELL-BEING

FOR YOUR WALLET

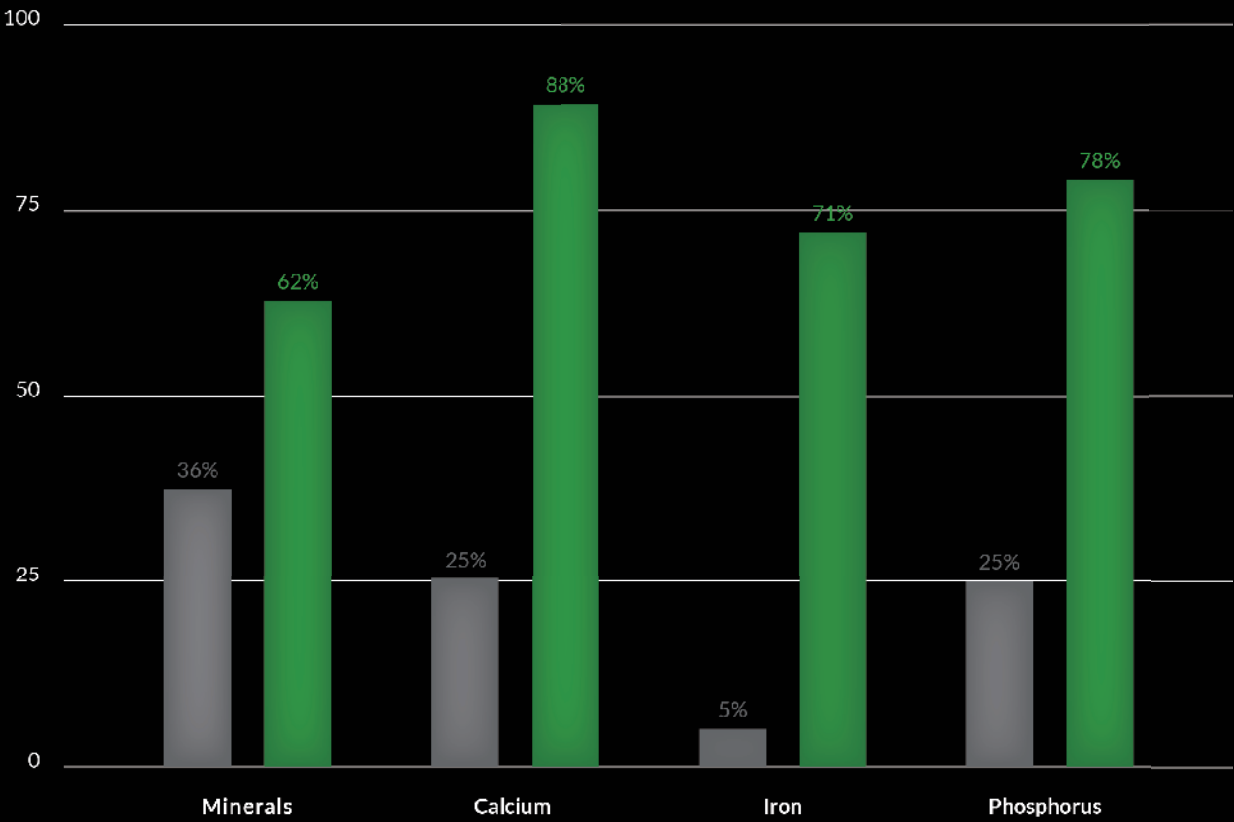
Material heat transmission in comparison to stainless steel



OUR PAN IS THE FIRST ENERGY EFFICIENT PAN OF ITS KIND.



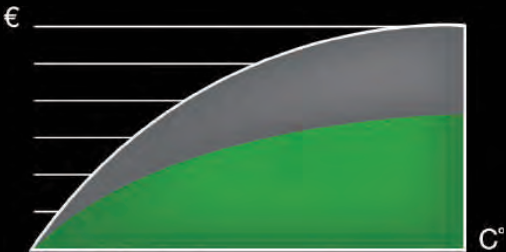
Retained vitamins and minerals in comparison



Conventional cookware AMT cookware

Cost efficiency compared

Data source: Nestlé Professional GmbH, 1/2014





# ECO — KITCHEN — FOR FUTURE

Meet the “Pan for your lifetime”, created entirely in the spirit of eco – for all those to whom ecology is an important element while making purchase decisions.

This unique product implements as many as four different ideas which help to protect the environment.

## 01.

### LESS CO<sub>2</sub>

CO<sub>2</sub> is an environmentally hazardous greenhouse gas, emitted during the production and consumption of goods and services. It is no secret that electricity has huge impact in their production.

Conscious selection of products that you will use for a long time will significantly reduce your carbon footprint.

AMT pans are produced in a sustainable and environmentally friendly manner, significantly reducing the carbon footprint.

## 03.

### RECYCLING

The new AMT “pan for your lifetime” is made of recycled aluminum. This means that enormous amount of aluminum garbage littering our planet gets a new life, and you can enjoy new, reliable, eco-friendly pan that will be used by the next generations.

By using such a high-quality product, you are doing something significantly helping the natural environment – you protect it from generating further waste.

## 02.

### RECOATING

We set a new global trend – you will never have to throw away your worn out Eco Pan again!

AMT Eco Pan will stay with you for many years. Now you can enjoy it throughout your whole life and even pass it on to future generations. Why? If the outer layer becomes worn out after long use, you can send us your Eco Pan at any time. We will refresh it and cover it with a new layer of Lotan® non-stick coating, restoring its excellent properties and original shine even after years of use.

## 04.

### SOLAR ENERGY

The sun is the eternal force that gives life to our planet. Thanks to advanced processing technologies, we can use it as an energy generator, favoring the entire natural environment.

By using an AMT pan, you support sustainable and environment-friendly production based on the energy of the sun – and this allows us to expand our solar farms.



**01**

Non-Stick Surface Finish. Non-stick coating layer, made from our unique Lotan® sealing with anti-bacterial effect.

**02**

Reinforced Layer. Additional layer fortified with mineral particles to provide a long lasting abrasion resistance.

**03**

Anti-Corrosion Layer. Anti-corrosion layer for protection against aggressive detergents, fruit acids and acetic.

**04**

Titanium Oxide Layer. Titanium oxide layer nearly as hard as diamond, extremely scratch and cut resistant

**05**

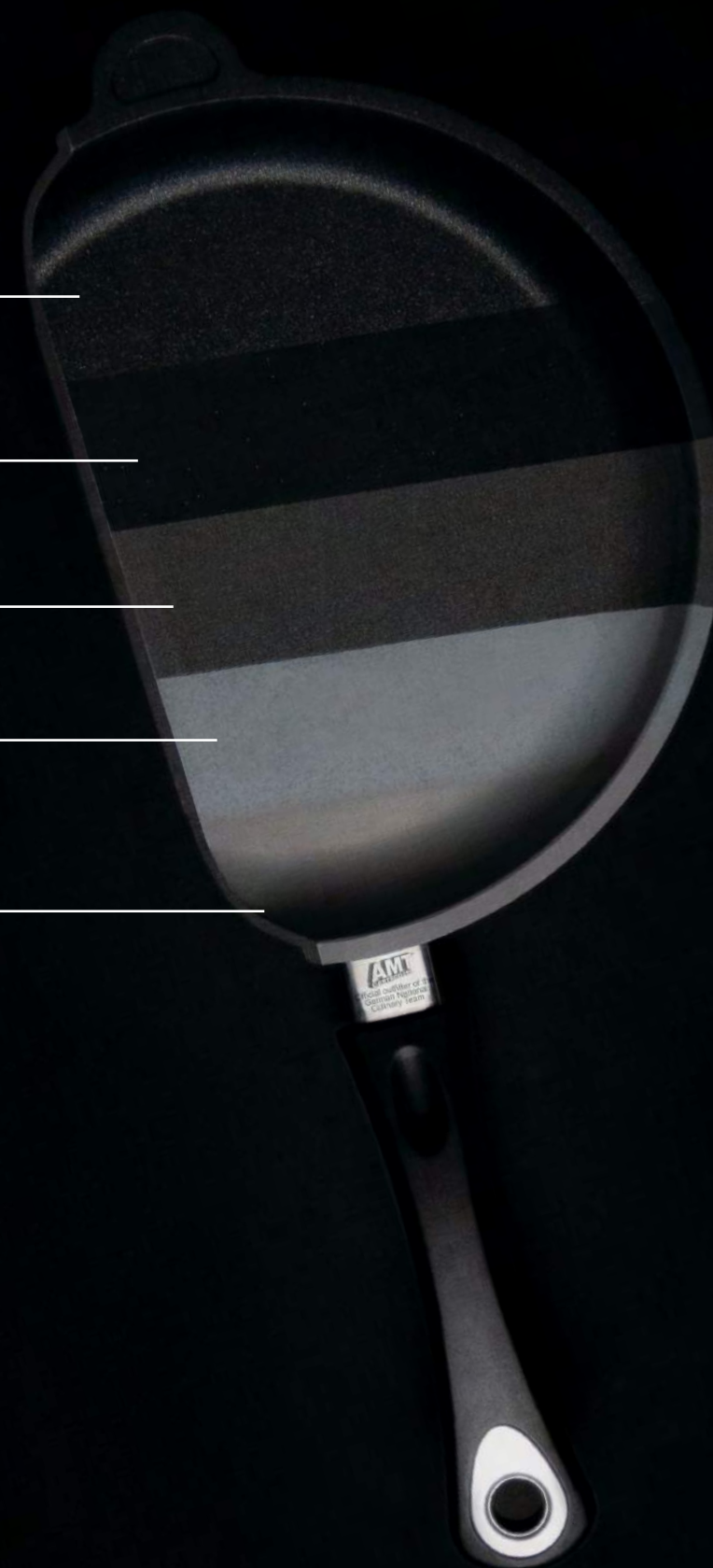
Heavy Duty Handcasted Aluminum. Abrasive blasting enhances the surface area 12 time better, enabling superior adhesion for the subsequent layers.



Lotan® is the new revolutionary coating technology for modern gastronomic applications.

the non-stick characteristics of our Lotan® coating simplify the cleaning of your cookware and keep the surface germ free.

Our Lotan® coating makes our cookware so easy to rinse that it helps save one of our planets most precious natural resources - water and your hard earned money.



# Our ——— products

01	02					
<hr/>	<hr/>					
PANS	SQUARE PANS					
03	04	05	06	08	09	
<hr/>	<hr/>	<hr/>	<hr/>	<hr/>	<hr/>	
WOKS	FISH PANS	POTS	GRILL & BBQ	ROASTING	SPECIAL EDITION	
						10
						<hr/>
						PROFESSIONAL GASTRONOMY





# PANS

Must-have allrounders  
for perfect frying and  
tossing results.

# Tossing Pan

N°.428



Available sizes  
products available for induction

Tossing Pan N°.420

20 cm | 4 cm | with handle

Tossing Pan N°.424

24 cm | 4 cm | with handle

Tossing Pan N°.428

28 cm | 4 cm | with handle

Tossing Pan N°.432

32 cm | 4 cm | with handle

# Frying Pan

N°.528



Available sizes  
products available for induction

Frying Pan N°.520

20 cm | 5 cm | with handle

Frying Pan N°.524

24 cm | 5 cm | with handle

Frying Pan N°.526

26 cm | 5 cm | with handle

Frying Pan N°.528

28 cm | 4 cm | with handle

Frying Pan N°.532

32 cm | 5 cm | with handle



# Braising Pan

Nº.728



Available sizes  
products available for induction

Braising Pan Nº.720

20 cm | 7 cm | with handle

Braising Pan Nº.724

24 cm | 7 cm | with handle

Braising Pan Nº.726

26 cm | 7 cm | with handle

Braising Pan Nº.728

28 cm | 7 cm | with handle

# Braising Pan

Nº.828



Available sizes  
products available for induction

Braising Pan Nº.828

28 cm | 8 cm | side handles

Braising Pan Nº.832

32 cm | 8 cm | side handles



# Braising Pan

Nº.828GS



Available sizes \_\_\_\_\_  
products available for induction

Braising Pan Item Nº.828GS

28 cm      8 cm  
with handle and side handle







# SQUARE PANS

More space for steaks, cutlets  
and skewers.

# Square Pan

N°.E246



Available sizes  
products available for induction

Square pan N°.E205

20 x 20 cm | 5 cm | with handle

Square pan N°.E246

24 x 24 cm | 6 cm | with handle

Square pan N°.E264

26 x 26 cm | 4 cm | with handle

Square pan N°.E267

26 x 26 cm | 7 cm | with handle

Square pan N°.E285

28 x 28 cm | 5 cm | with handle

# Grill Square Pan

N°.E264G



Available sizes  
products available for induction

Square pan N°.E205G

20 x 20 cm | 5 cm | with handle

Square pan N°.E264G

26 x 26 cm | 4 cm | with handle

Square pan No.E267G

26 x 26 cm | 7 cm | with handle

Square pan N°.E285G

28 x 28 cm | 5 cm | with handle



# Square Pan

N°.E207



Available sizes  
products available for induction

Square pan N°.E207

20 x 20 cm | 7 cm | side handles

Square pan N°.E247

24 x 24 cm | 7 cm | side handles

Square pan N°.E268

26 x 26 cm | 8 cm | side handles

Square pan N°.E269

26 x 26 cm | 9 cm | side handles

Square pan N°.E287

28 x 28 cm | 7 cm | side handles

Square pan N°.E289

28 x 28 cm | 9 cm | side handles

# Square Pan

N°.E269GS



Available sizes  
products available for induction

Square pan N°.E269GS

26 x 26 cm | 9 cm  
with long and side handle

Square pan N°.E287GS

28 x 28 cm | 7 cm  
with long and side handle

# Square Pan BBQ

N°.E285BBQ



## Available sizes

products available for induction

### Square pan N°.E285BBQ

28 x 28 cm | 5 cm | with handle  
diamond-shaped BBQ pattern







# WOKS

Multifunctionality:  
stir frying, deep frying  
and a steamer with a lid

Wok

N°.1030S



Available sizes  
products available for induction

Wok N°.1126S

26 cm | 9 cm | with handle

Wok N°.1128S

28 cm | 11 cm | with handles

Wok N°.1030S

30 cm | 9 cm | side handles

Wok N°.1032S

32 cm | 9 cm | with handles

Wok N°.1132S

32 cm | 10 cm | with handles

Wok N°.1136S

36 cm | 10 cm | with handle

Wok

N°.1132



Available sizes  
products available for induction

Wok N°.1132

20 x 20 cm | 7 cm | side handles

Wok N°.1136

28 x 28 cm | 7 cm | side handles





# FISH PANS

Ideal for searing, grilling and  
frying whole fish

# Fish Pan

N°.3524



Available sizes  
products available for induction

Fish pan N°.3524

35 x 24 cm 5 cm | with handle

Fish pan N°.4127

41 x 27 cm 5 cm | with handle

# Grill Fish Pan

N°.3524G



Available sizes  
products available for induction

Fish pan N°.3524G

35 x 24 cm 5 cm  
with handle and grill surface



# Fish Pan BBQ

Nº.3524BBQ



Available sizes \_\_\_\_\_  
products available for induction

Fish pan Nº.3524BBQ

35 x 24 cm | 5 cm | with handle  
diamond-shaped | BBQ pattern







# POTS

Soups, stews and pasta -  
nutritious and delicious.



# Braising Pot

N°.820



Available sizes  
products available for induction

Braising pot N°.820

20 cm 8 cm  
with side handles

Braising pot N°.824

24 cm 8 cm  
with side handles

Braising pot N°.826

26 cm 8 cm  
with side handles

# Casserole

N°.1020



Available sizes  
products available for induction

Casserole N°.1020

20 cm 10 cm  
with side handles

Casserole N°.1228

28 cm 10 cm  
with side handles

Casserole N°.1024

24 cm 10 cm  
with side handles

Casserole N°.1232

32 cm 10 cm  
with side handles

Casserole N°.1026

26 cm 10 cm  
with side handles

Pot

Milk & Sauce Pot

N°.716

N°.816



Available sizes

products available for induction

Pot N°.716

16 cm 8,5 cm | side handles

Pot N°.920

20 cm 12 cm | side handles

Pot N°.924

24 cm 4 cm | side handles

Pot N°.926

26 cm 15 cm | side handles

Pot N°.928

28 cm 16 cm | side handles

Pot N°.1632

32 cm 16 cm | side handles

Pot N°.2132

32 cm 21 cm | side handles

Available sizes

products available for induction

Milk and sauce pot N°.816

16 cm 8 cm | with handle



# Milk & Sauce Pot

N°.916



Available sizes \_\_\_\_\_  
products available for induction

Milk and sauce pot N°.916

⌀ 16 cm      |↑↓| 10 cm | with handle

# Milk & Sauce Pot

N°.918



\_\_\_\_\_ Available sizes  
products available for induction

Milk and sauce pot N°.918

⌀ 18 cm      |↑↓| 10 cm | with handle  
and two spouts

# Milk & Sauce Pot

N°.1120



Available sizes  
products available for induction

Milk and sauce pot N°.1120

20 cm 11 cm  
with two spouts and handle

# Milk & Sauce Pot

N°.1214



Available sizes

Milk and sauce pot N°.1214

14 cm 12 cm  
with spout and side handle





# GRILL & BBQ

Ideal for griling and barbecue.  
Perfect for meats and vegetables.

# Square Pan

N°.E264G



Available sizes  
products available for induction

- Square pan N°.E205G  
20 x 20 cm | 5 cm | with handle
- Square pan N°.E264G  
6 x 26 cm | 4 cm | with handle

- Square pan N°.E267G  
26 x 26 cm | 7 cm | with handle
- Square pan N°.E285G  
28 x 28 cm | 5 cm | with handle

# Square Pan BBQ

N°.E285BBQ



Available sizes  
products available for induction

- Square pan N°.E285BBQ  
28 x 28 cm | 5 cm | with handle  
diamond-shaped BBQ pattern



# Fish Pan

N°.3524BBQ



Available sizes  
products available for induction

Fish pan N°.3524BBQ

35 x 24 cm | 5 cm | with handle  
diamond-shaped BBQ pattern

# Fish Pan

N°.3524G



Available sizes  
products available for induction

Fish pan N°.3524G

35 x 24 cm | 5 cm | with handle

# BBQ Surface

N°.23733BBQ



Available sizes  
products available for induction

GN 1/1 N°.25333BBQ

53 x 32,5 cm 2 cm  
diamond-shaped BBQ pattern

GN 2/3 N°.23733-BBQ

35,4 x 32,5 cm 2 cm  
diamond-shaped BBQ pattern

# BBQ Surface

N°.23733G-BBQ



Available sizes  
products available for induction

GN 1/1 N°.25333G-BBQ

53 x 32,5 cm 2 cm  
with stainless steel handles  
diamond-shaped BBQ pattern

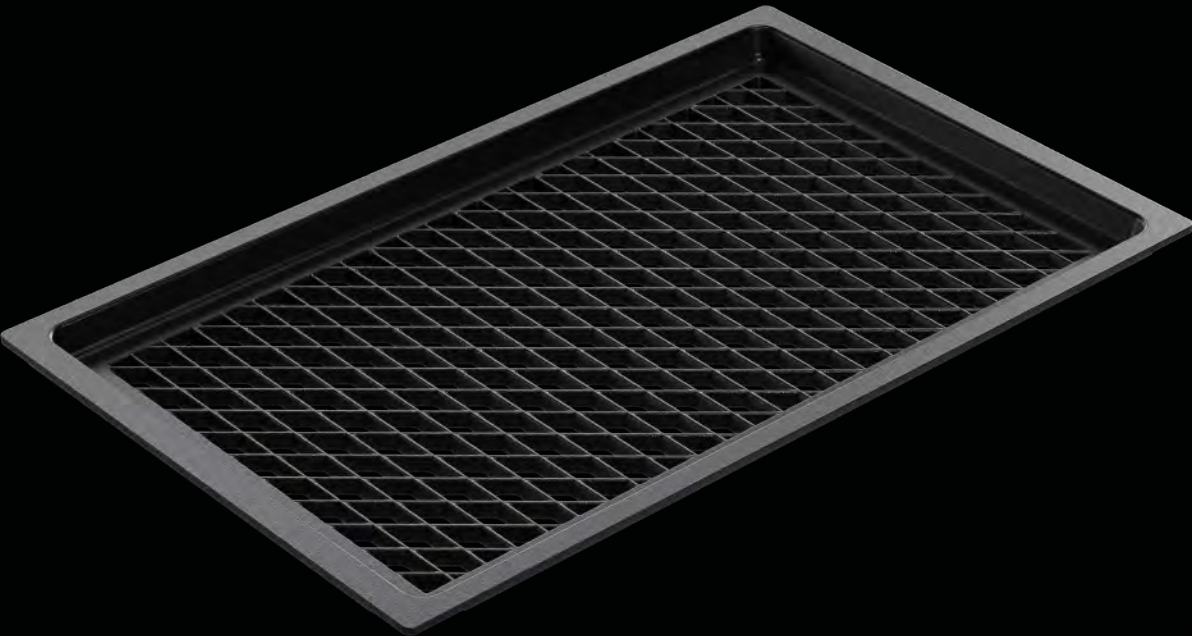
GN 2/3 N°.23733G-BBQ

35,4 x 32,5 cm 2cm  
with stainless steel handles  
diamond-shaped BBQ pattern



# BBQ Surface

N°.25333BBQ-R



Available sizes

GN 1/1 N°.25333BBQ-R

53 x 32,5 cm 2 cm  
diamond-shaped BBQ pattern perforated  
for use on a grill

GN 2/3 N°.23733BBQ-R

35,4 x 32,5 cm 2 cm  
diamond-shaped BBQ pattern perforated  
for use on a grill

# BBQ Surface

N°.25333G-BBQ-R



Available sizes

GN 1/1 N°.25333G-BBQ-R

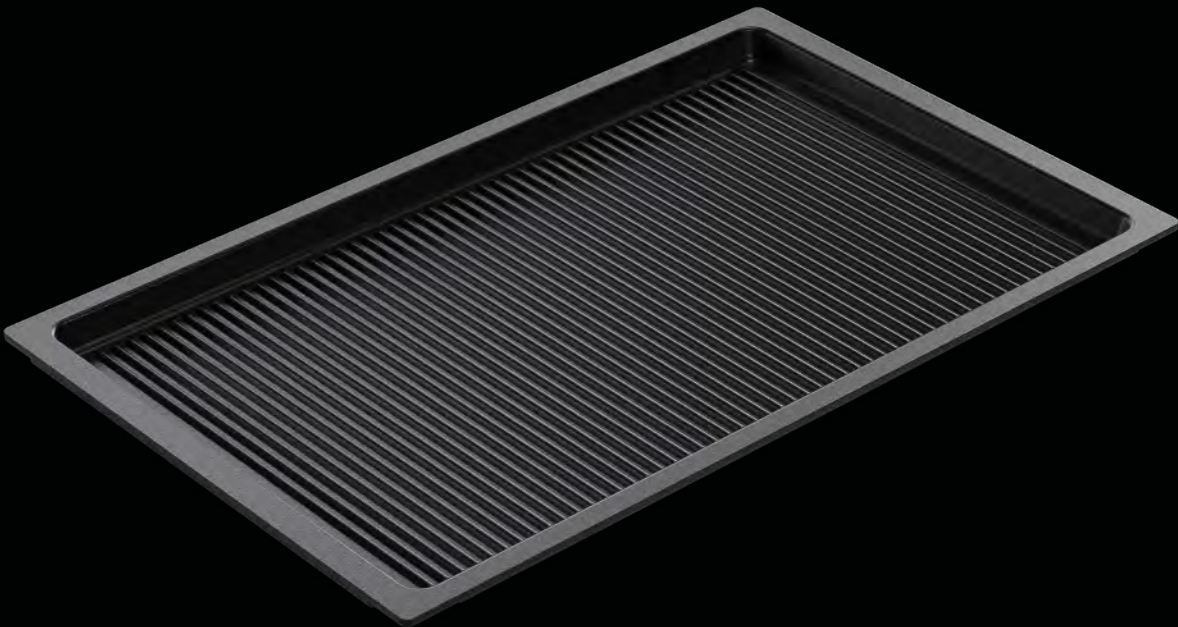
53 x 32,5 cm 2 cm  
diamond-shaped BBQ pattern perforated  
for use on a grill | with stainless steel handle

GN 1/1 N°.23733G-BBQ-R

35,4cm 2 cm  
diamond-shaped BBQ pattern perforated  
for use on a grill | with stainless steel handle

# Grill Surface

N°.22733Grill



Available sizes  
products available for induction

GN 1 / 2 N°.22733Grill

53 x 32,5 cm 2 cm

GN 1 / 1 N°.55333Grill

53 x 32,5 cm 5,5 cm

GN 1 / 2 N°.22733Grill

53 x 32,5 cm 2 cm

# Grill Surface

N°.22733GG



Available sizes  
products available for induction

GN 1 / 2 N°.22733GG

26,5 x 32,5 cm 2 cm  
with stainless steel handles

GN 2/3 N°.55333GG

53 x 32,5 cm 5,5 cm  
with stainless steel handles

GN 1 / 1 N°.25333GG

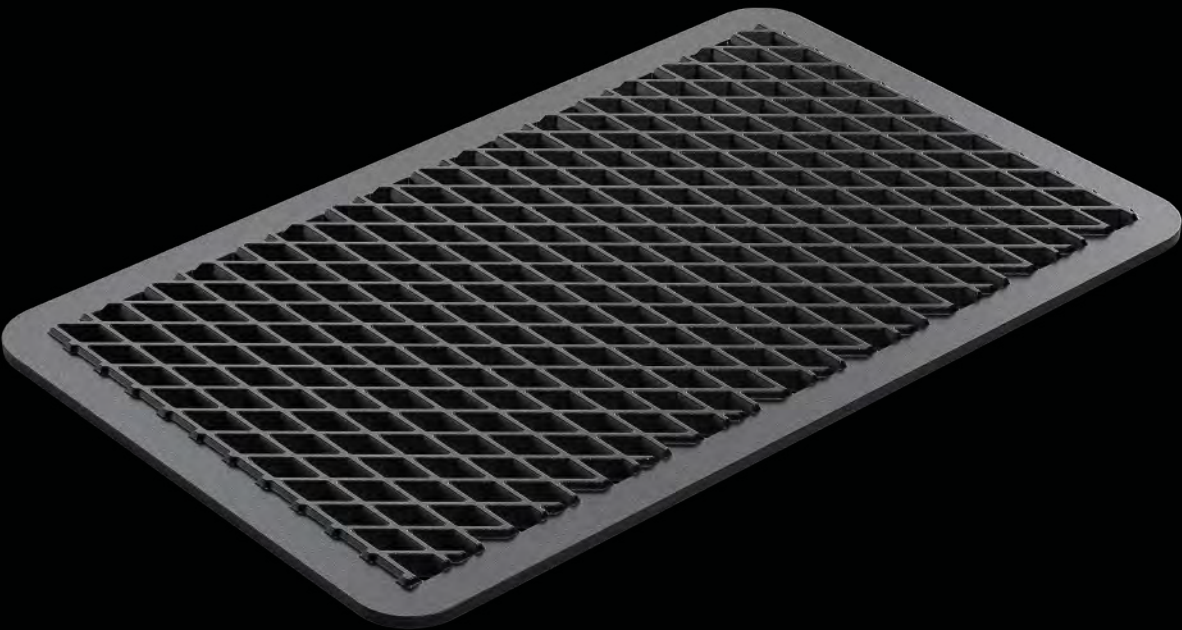
53 x 32,5 cm 2 cm  
with stainless steel handles



Use on grill

# Barbeque grate

Nº.15333BBQ-R



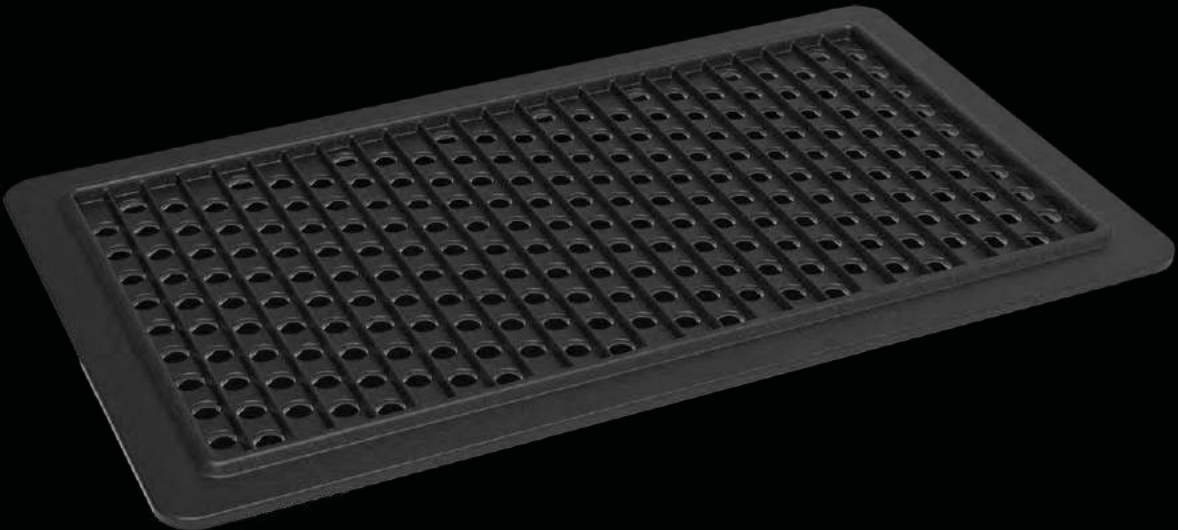
Available sizes

Barbeque grate 1 / 1  
Nº.15333BBQ-R

53 x 32,5 cm 1 cm  
diamond-shaped BBQ pattern | perforated

# Barbeque grate

Nº.15333BBQ-GL-R



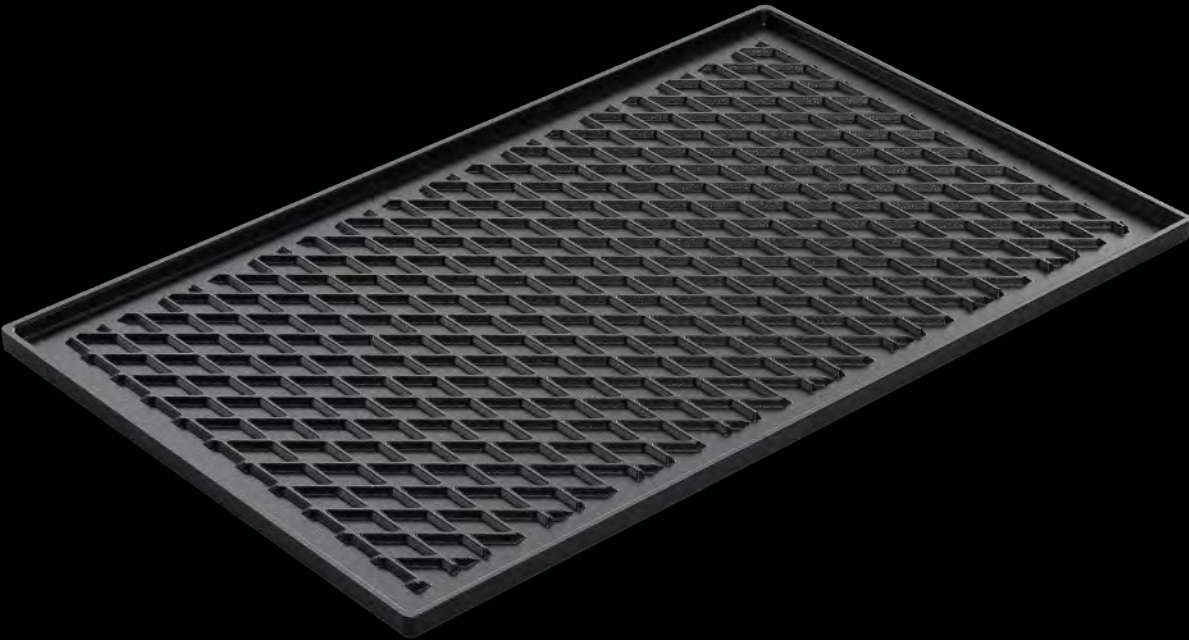
Available sizes

Barbeque grate 1 / 1  
Nº.15333BBQ-GL-R

53 x 32,5 cm  
diamond-shaped BBQ pattern | perforated

# Grill & Pizza Plate

N°.15333BBQ



Available sizes

Grill & Pizza plate 2 / 3  
N°.13733BBQ

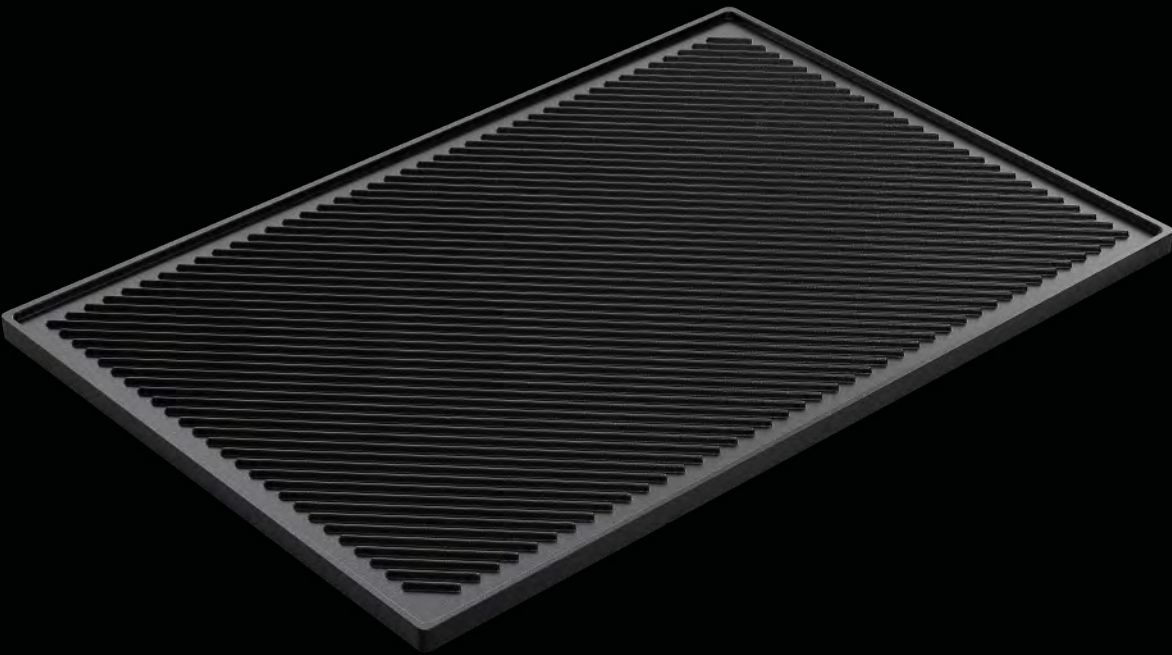
35,4 x 32,5 cm 2 cm  
diamond-shaped BBQ pattern

Grill & Pizza plate 1 / 1  
N°.15333BBQ

53 x 32,5 cm 2 cm  
diamond-shaped BBQ pattern

# Grill & Pizza Plate

N°.15333G



Available sizes

Grill & Pizza plate 1 / 1  
N°.15333G

53 x 32,5 cm 2 cm  
grill surface

Grill & Pizza plate Baker Norm  
N°.16040G

60 x 40 cm 2 cm  
grill surface

Grill & Pizza plate 2 / 3  
N°.13733G

35,4 x 32,5 cm 2 cm  
grill surface



Use on grill

# Grill Pan

N°.432BBQ-Z20-B



Available sizes \_\_\_\_\_

Grill pan perforated N°.432BBQ-Z20-B

⊕ 32 cm      ⊕ 4 cm  
with detachable handle with black  
inlay for use on a grill







# ROASTING

Evenly roasted meat, crisp  
skin, crunchy edges of the  
vegetables



# Roasting Dish

N°.3321



For matching lid see item N°. 03321S

Available sizes \_\_\_\_\_  
products available for induction

Roasting dish N°.63321

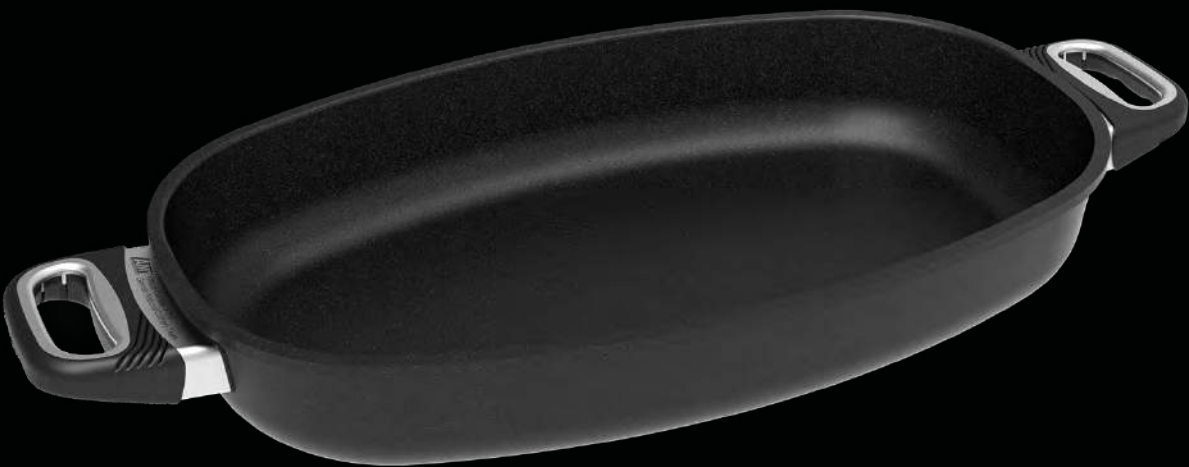
33 x 21 cm 6 cm

Roasting dish N°.3321

33 x 21 cm 11 cm

# Jumbo Roasting Dish

N°.74024



For matching lid see item N°. 04024S

Available sizes \_\_\_\_\_  
products available for induction

Roasting dish N°.74024

40 x 24 cm 6 cm

Roasting dish N°.4024

40 x 24 cm 12 cm

# Universal Roasting Dish

Nº.93824



For matching lid see item Nº.493824

Available sizes

Universal roasting dish  
Nº.93824

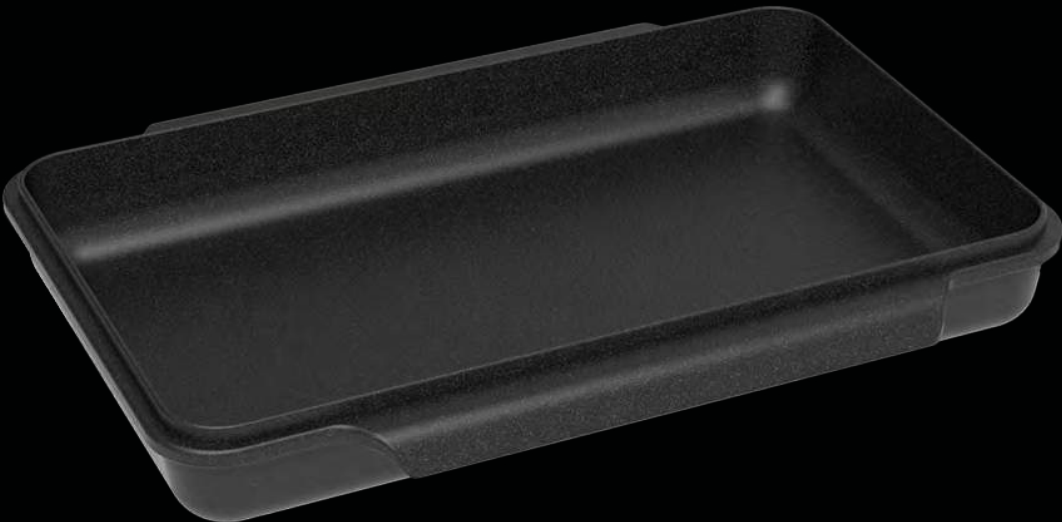
38 x 24 cm 9 cm

Universal roasting dish  
Nº.93824A

38 x 24 cm 9 cm  
with detachable handles

# Lid for Universal roasting dish

Nº.493824



Available sizes

Lid for universal roasting dish  
Nº.493824

38 x 24 cm



# Roasting dish with spout

N°.4228



Available sizes  
products available for induction

Roasting dish with spout  
N°.3222

32 x 22 cm 12cm

Roasting dish with spout  
N°.4228

42 x 28 cm 12cm

# Roasting dish lid

N°.64228



Available sizes  
products available for induction

Roasting dish lid N°.3222

42 x 28 cm 5,5cm  
grill surface

Roasting dish lid N°.63222

42 x 28 cm 5,5cm  
grill surface



# Cocotte Lid

N°.13222



Available sizes \_\_\_\_\_

“La Cocotte” Roasting  
Dish Lid N°.13222

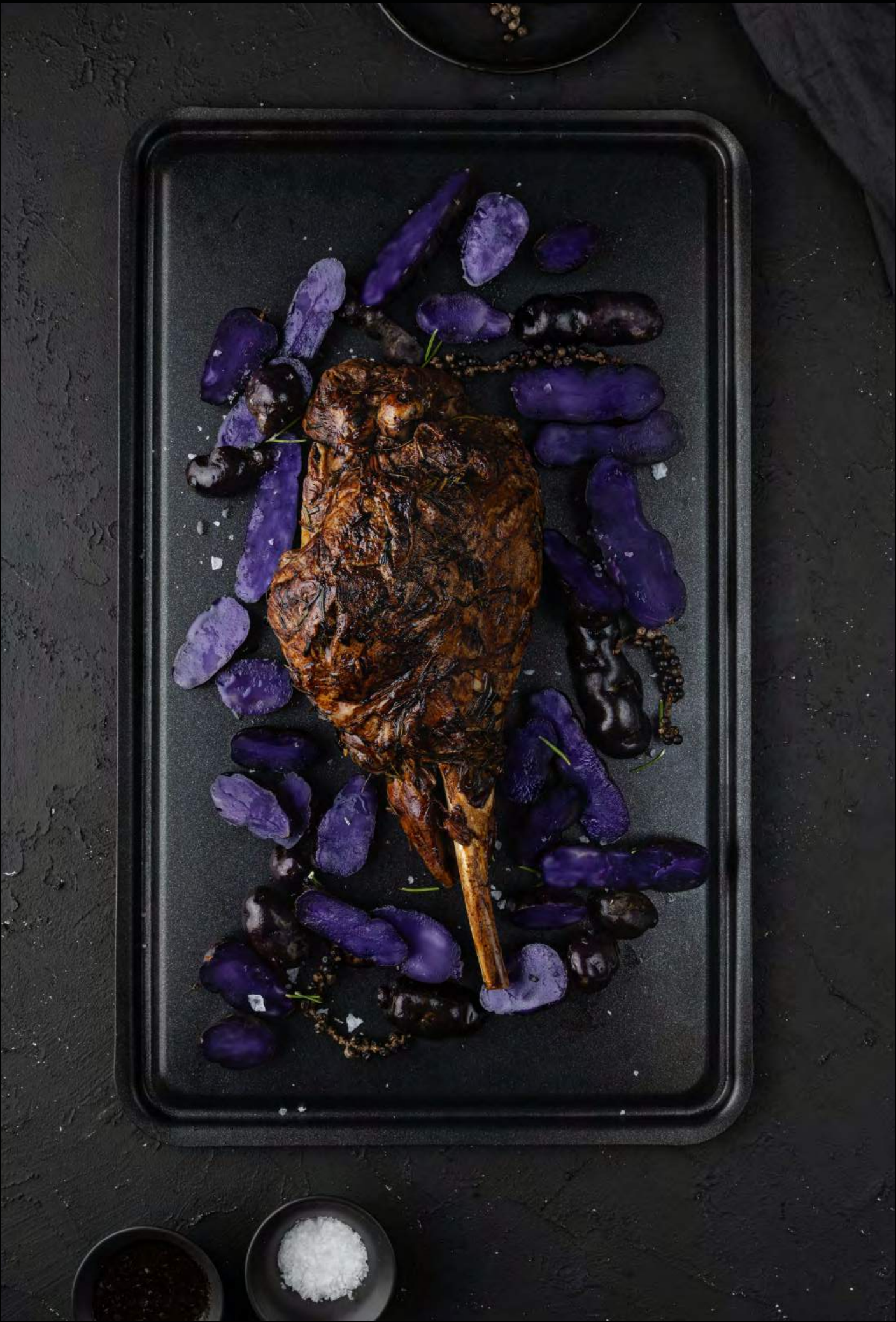
32 x 22 cm

Lid for roasting dish Item nr. 3222 / 63222

“La Cocotte” Roasting  
Dish Lid N°.14228

43,5 x 24,5 cm

Lid for roasting dish item nr. 4228 / 64228







# SPECIAL EDITIONS

Special editions making great addition to your kitchen

# MAKING COOKING EASIER LIGHT PAN

N°.524-L



Available sizes  
products available for induction

Light Pan N°.5L24

24 cm 5 cm

Light Pan N°.5L28

28 cm 5 cm

Light Pan N°.7L24

24 cm 7 cm

Light Pan N°.7L28

28 cm 7 cm

## quality

It weights less than our regular pans, makes it more comfortable to operate and provides all the benefits of regular AMT cookware.

## unique

The AMT light pan is a perfect solution, if you're looking for a handy, versatile pan for every-day use.

## efficiency

Thick aluminum base ensures quick and even heat distribution on the whole surface of the Light Pan. Cooking time is lowered by up to 30% and you save more vitamins and nutrients.

01.

### WEIGHT

Lighter than our regular pans, which makes it much more handier and easier to use

02.

### QUALITY

Provides all the qualities of professional cookware available in our regular offer

03.

### RESISTANT

Made of heavy duty, hand-casted aluminum: extremely resistant to damage

04.

### LOTAN

Non-stick Lotan® coating: fat-free cooking, easy cleaning

05.

### HEAT

6-7 mm thick bottom: excellent thermal conductivity and heat retention

06.

### TIME

20% shorter cooking time: save more natural juices, vitamins and minerals

07.

### ECO

Environmental friendly thanks to lower consumption of energy, water and detergents

# YOUR BENEFITS



# Crêpes Pan

N°.124



Available sizes \_\_\_\_\_  
products available for induction

Crêpes pan N°.124

⌀ 24 cm      |↑↓| 1 cm

Crêpes pan N°.128

⌀ 28 cm      |↑↓| 1 cm

# Cake Pan

N°.226



\_\_\_\_\_ Available sizes  
products available for induction

Cake pan N°.226

⌀ 26 cm      |↑↓| 1 cm

# COOK MORE — IN SHORTER TIME — **3 DIVIDED PAN**

Nº.832-3S



Available sizes —  
products available for induction

3-Divided Pan Nº.832-3S

32 cm      8 cm  
with side handles | 3 segments

## quality

Tradition, solid craftsmanship and modern technology combined with top-grade material to provide our customers with premium quality cookware.

## unique

Pan with three segments allowing to prepare three different meals in one dish at the same time, without mixing the ingredients in process.

## ecology

AMT cookware is produced in a sustainable and environmentally friendly manner, significantly reducing the carbon footprint - for all those Chefs to whom ecology is an important element of purchase making decision.

01.

### WEIGHT

Three segments: prepare 3 different kinds of meals or make the dishes in 3 different ways

02.

### QUALITY

Provides all the qualities of professional cookware available in our regular offer

03.

### RESISTANT

Made of heavy duty, hand-casted aluminum: extremely resistant to damage

04.

### LOTAN

Non-stick Lotan® coating: fat-free cooking, easy cleaning

05.

### HEAT

9-10 mm thick bottom for excellent thermal conductivity and heat retention

06.

### TIME

20% shorter cooking time: save more natural juices, vitamins and minerals

07.

### ECO

Environmental friendly thanks to lower consumption of energy, water and detergents

# YOUR BENEFITS



# Sauteuse

N°.620



Available sizes

Sauteuse N°.620

20 cm 6 cm

Sauteuse N°.624

24 cm 6 cm

# Paella Pan

N°.732



Available sizes

Paella pan N°.732

35 cm 7 cm  
brass side handles

# BAKE BETTER — IN SHORTER TIME OVEN BAKING TRAY

Nº.EUS3000



## quality

Tradition, solid craftsmanship and modern technology combined with top-grade material to provide home bakers with premium quality Oven Baking Tray.

## unique

Oven Baking Tray is made in the same technology as our beloved “AMT The World’s Best Pan” cookware – hand-casted aluminum with non-stick Lotan® coating and is available in four different sizes.

## ecology

By using such a high-quality product, you are significantly helping our environment – you protect it from generating further waste, save energy and use less water while cleaning.

### 01. QUALITY

Provides all the qualities of professional cookware available in our regular offer

### 02. RESISTANT

Made of heavy duty, hand-casted aluminum: extremely resistant to damage

### 03. LOTAN

Non-stick Lotan® coating: no baking paper needed, fat-free baking, easy cleaning

### 04. HEAT

2-3 mm thick base: excellent thermal conductivity and heat retention

### 05. TIME

20% shorter baking time, great culinary results, crispy and browning effects

### 06. ECO

Environmental friendly thanks to lower consumption of energy, water and detergents

## YOUR BENEFITS

#### Available sizes

Home Oven Baking Try  
Nº.EUS3000

45,9 x 36 cm 2,5 cm

Home Oven Baking Try  
Nº.EUS3010

46,5 x 36 cm 2,5 cm

Home Oven Baking Try  
Nº.EUS3020

44,7 x 36 cm 12,5 cm

Home Oven Baking Try  
Nº.EUS3030

45,7 x 36 cm 2,5 cm



# Gratin Pan

N°.3520



Available sizes

Gratin pan N°.3520

53 x 32,5 cm  
grill surface

7 cm

# Lyone Pan

N°.L532



Available sizes  
products available for induction

Lyone pan N°.L532

32 cm  
with stainless steel handle

5 cm

Lyone pan N°.L736

36 cm  
with stainless steel handle

7 cm

# Serving Pan

N°.418



Available sizes \_\_\_\_\_

Serving pan N°.418

18 cm      2 cm  
with casted side handles

Gratin pan N°.522

22 cm      5 cm  
with casted side handles







# PROFESSIONAL GASTRONOMY

Specialized cookware  
for gastronomy

# Gastronorm

N°.51833



Available sizes

products available for induction

GN 1 / 3 N°.51833

32,5 x 17,6 cm 5 cm

GN 1 / 3 N°.101833

32,5 x 17,6 cm 10 cm

GN 1 / 2 N°.52733

26,5 x 32,5 cm 5 cm

GN 2 / 3 N°.103733

35,4 x 32,5 cm 10 cm

GN 2 / 3 N°.53733

35,4 x 32,5 cm 5 cm

GN 1 / 1 N°.25333

53 x 32,5 cm 2 cm

GN 1 / 1 N°.55333

53 x 32,5 cm 5,5 cm

GN 1 / 1 N°.105333

53 x 32,5 cm 10 cm

# Gastronorm

N°.51833G



all products with stainless steel handles

Available sizes

products available for induction

GN 1/3 N°.51833G

32,5 x 17,6 cm 5 cm

GN 1/3 N°.101833G

32,5 x 17,6 cm 10 cm

GN 2/3 N°.53733G

35,4 x 32,5 cm 5,5 cm

GN 2/3 N°.23733G

35,4 x 32,5 cm 5,5 cm

GN 2/3 N°.103733G

35,4 x 32,5 cm 10 cm

GN 1/1 N°.25333G

53 x 32,5 cm 2 cm

GN 1/1 N°.55333G

53 x 32,5 cm 5,5 cm

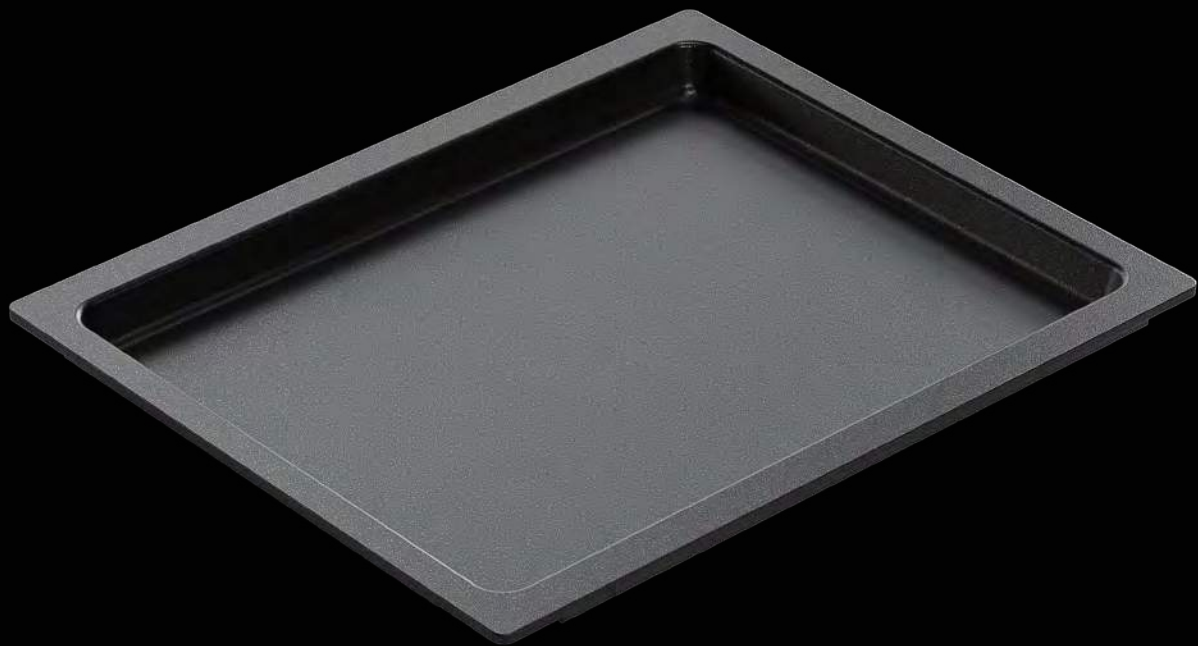
GN 2/3 N°.103733G

53 x 32,5cm 10 cm



# Gastronorm

N°.22733



Available sizes  
products available for induction

GN 1 / 2 N°.22733

26,5 x 32,5 cm 2 cm

GN 1 / 2 N°.22733

26,5 x 32,5 cm 5 cm

GN 2 / 4 N°.25316

53 x 16,2 cm 2 cm

GN 2 / 4 N°.55316

53 x 16,2 cm 2 cm

# Gastronorm

N°.22733G



all products with stainless steel handles

Available sizes  
products available for induction

GN 2 / 4 N°.25316G

53 x 16,2 cm 2 cm

GN 1 / 2 N°.22733G

26,5 x 32,5 cm 5 cm

GN 1 / 2 N°.22733G

26,5 x 32,5 cm 2 cm

GN 2 / 4 N°.55316G

53 x 16,2 cm 2 cm

# Gastronorms Grill

N°.55333Grill



Available sizes  
products available for induction

GN 1 / 1 N°.55333Grill

53 x 32,5 cm 5,5 cm  
grill surface

# Gastronorms Grill

N°.55333GG



Available sizes  
products available for induction

GN 1 / 1 N°.55333GG

53 x 32,5 cm 5,5 cm  
grill surface with stainless steel handles



# Gastronorms 2 Segments

N°.55333GS



Available sizes  
products available for induction

GN 1 / 1 N°.55333GS

53 x 32,5 cm 5,5 cm  
grill surface

# Gastronorms 2 Segments

N°.55333GGS



Available sizes  
products available for induction

GN 1 / 1 N°.55333GGS

53 x 32,5 cm 5,5 cm  
grill surface with stainless steel handles

# Baking Tray

N°.5333WP



Available sizes

GN 1 / 1 multipurpose  
baking tray N°.5333WP

53 x 32,5 cm

GN 1 / 1 Multipurpose  
baking tray N°.5333WBL

53 x 32,5 cm

# Baking Tray

N°.5333BBL-3



Available sizes

GN 1 / 1 baking tray /  
univ. tray N°.5333BBL-3

53 x 32,5 cm

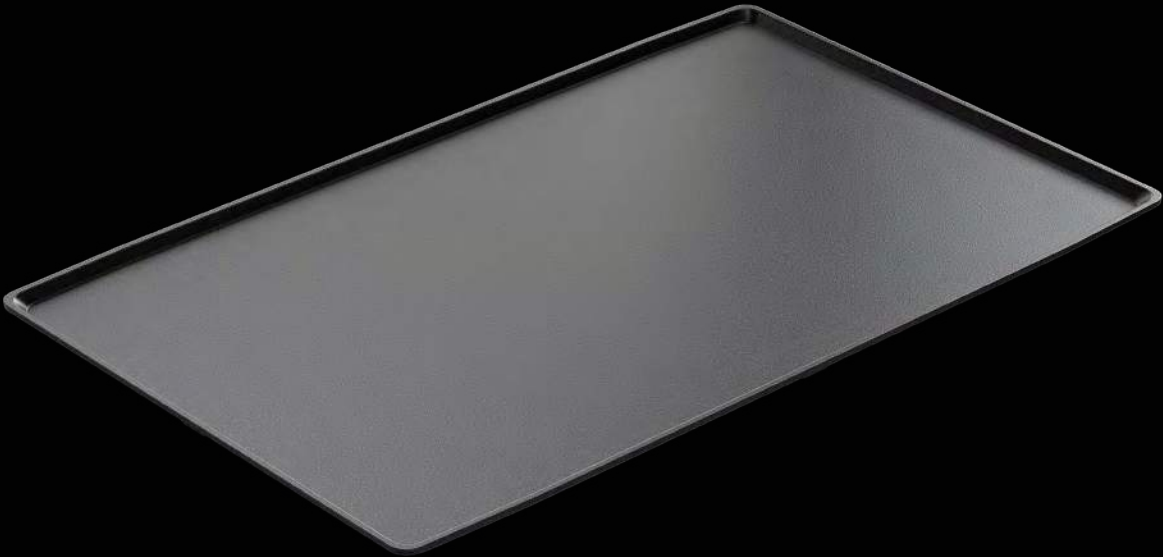
Baker Norm Tray  
univ. tray N°.6040BBL-2

60 x 40 cm



# Baking Tray

N°.5333BP-2



Available sizes

GN 1 / 1 baking tray /  
univ. plate N°.5333BP-2

53 x 32,5 cm 2 cm

# Mould Tray

N°.5333MP



Available sizes

GN 1 / 1 casted mould tray  
N°.5333MP

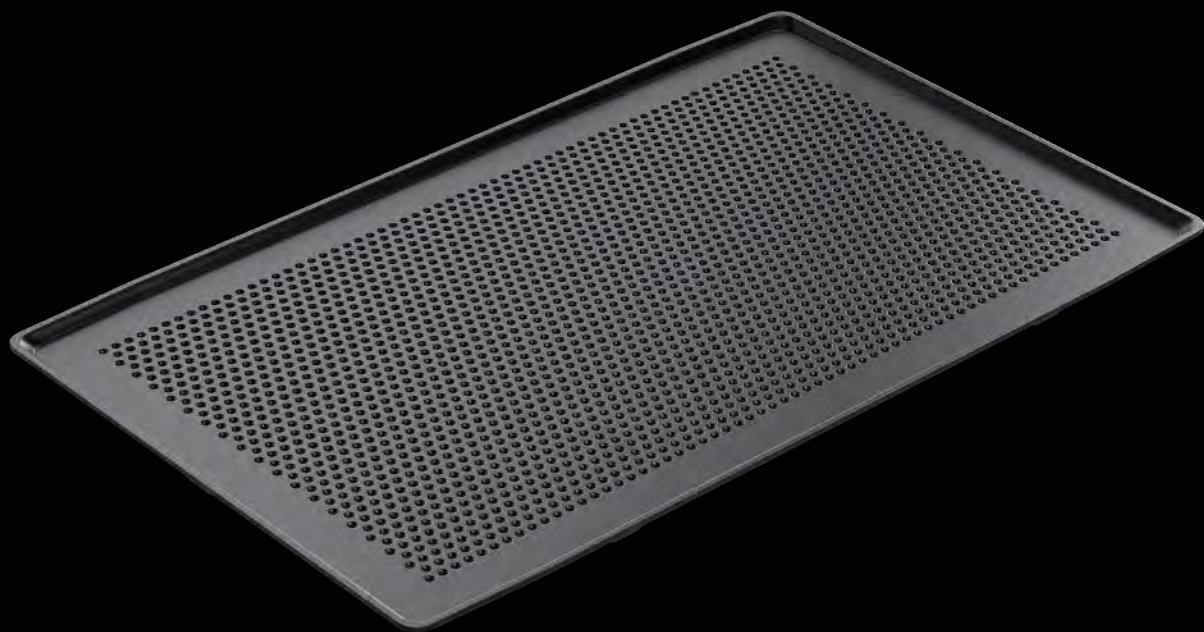
53 x 32,5 cm  
with 11 moulds

GN 2 / 3 casted mould tray  
N°.3733MP

35,4 x 32,5 cm  
with 6 moulds

# Baking Tray

Nº.5333BP-1



Available sizes

GN 1 / 1 baking tray/univ. plate  
Nº.5333BP-1

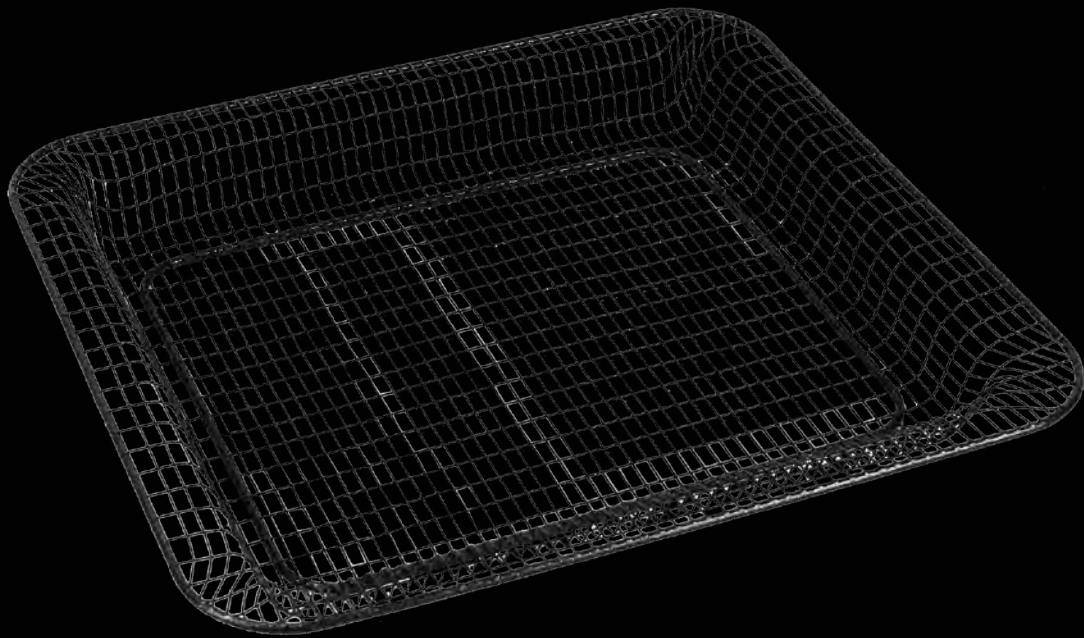
53 x 32,5 cm  
perforated

Baker norm baking tray  
/ univ. tray Nº.6040BBL-1

60 x 40 cm  
perforated

# Combi Basket

Nº.43733FK



Available sizes

GN 2 / 3 Combi Basket  
Nº.43733FK

35,4 x 32,5 cm

GN 1 / 1 Combi Basket  
Nº.45333FK

53 x 32,5 cm



# Large Capacity Pan

N°.738



Available sizes \_\_\_\_\_

Large capacity pan N°.738

↻ 38 cm    ↕ 7 cm  
casted handles

# Large Capacity Pan

N°.750



\_\_\_\_\_ Available sizes

Large capacity pan N°.750

↻ 50 cm    ↕ 8 cm  
casted handles

Large capacity pan N°.965

↻ 65 cm    ↕ 8 cm  
casted handles

Large capacity pan N°.980

↻ 80 cm    ↕ 10 cm  
casted handles

# Large Capacity Pan 2 Segments

N°.965S



Available sizes

Large capacity pan N°.750S

50 cm 8 cm  
casted handles | 2 segments

Large capacity pan N°.965S

65 cm 8 cm  
casted handles | 2 segments

Large capacity pan N°.980S

80 cm 10 cm  
casted handles | 2 segments

# Large Capacity Pan

N°.965-3S



Available sizes

Large capacity pan  
N°.965-3S

65 cm 8 cm  
casted handles | 3 segments

Large capacity pan  
N°.980-3S

80 cm 8 cm  
casted handles | 3 segments