

DUNAVOX

INSTRUCTION MANUAL FOR WINE COOLER

MODEL NO.

DAB-42.117DB
DAB-42.117DSS
DAB-48.125B
DAB-48.125SS

Thanks for buying our wine cooler, Hope our advanced product will give your wine a different joyful taste. Before use, please read and follow all safety rules and operating instructions.

WARNING!

- To prevent damaging the door gasket, make sure to have the door all the way opened when pulling shelves out of the rail compartment.
- The appliance must be positioned so that the plug is accessible. Release the electric cord. Move your cabinet to its final location. Do not move your Cabinet while loaded with wine. You might distort the body. The wine cellar should be installed in a suitable place in order to avoid Touching the compressor with the hand.
- The appliance must be positioned so that the plug is accessible. Release the electric
- **This appliance can be used by children aged from 8 years and above and persons with reduced physical, sensor and mental capabilities or lack of experience and knowledge if they have been given supervision or instruction concerning use of the appliance in a safe way and understand the hazards involved. Children shall not play with the appliance. Cleaning and user maintenance shall not be made by children without supervision.**
- If the supply cord is damaged, it must be replaced by manufacturer of its Service agent or a similarly qualified person in order to avoid a hazard.

PLEASE DON'T TRY TO PLUG INTO OR EXTENSION THE CABLE IN ANY CASE.

IMPORTANT SAFETY INSTRUCTIONS

⚡WARNING⚡	To reduce the risk of fire, electrical shock, or injury when using your appliance, follow these basic precautions:
<ul style="list-style-type: none"> • Read all instructions before using the Wine cooler. • DANGER or WARNING: Risk of child entrapment. Child entrapment and suffocation are not problems of the past. Junked or abandoned appliances are still dangerous . . . even if they will “just sit in the garage a few days”. • Before you throw away your old Wine cooler: Take off the door. Leave the shelves in place so that children may not easily climb inside. • Never allow children to operate, play with, or crawl inside the appliance. • Never clean appliance parts with flammable fluids. The fumes can create a fire hazard or explosion. • Do not store or use gasoline or any other flammable vapors and liquids in the vicinity of this or any other appliance. The fumes can create a fire hazard or explosion. Do not store explosive substances such as aerosol cans with a flammable propellant in this appliance. • WARNING:keep ventilation openings, in the appliance enclosure or in the built-in structure, clear of obstruction; • Do not use mechanical devices or other means to accelerate the defrosting process, other than those Recommended by the manufacturer; • WARNING:To avoid a hazard due to instability of the appliance, it must be fixed in accordance with the instructions. • WARNING:Do not damage the refrigerant circuit; • WARNING:Do not use electrical appliances inside the food storage compartments of the appliance, unless they are the type recommended by the manufacturer. • The refrigerant of these appliances is R600a , Flammable and explosive articles should not be put in or near the cabinet, to avoid the fire or explode caused. 	

-Save these instructions-

INSTALLATION INSTRUCTIONS

➤ **Before Using Your Wine cooler**

- Remove the exterior and interior packing.
- Before connecting the Wine cooler to the power source, let it stand upright for approximately 2 hours. This will reduce the possibility of a malfunction in the cooling system from handling during transportation.
- Clean the interior surface with lukewarm water using a soft cloth.
- This appliance is intended to be used in household and similar applications such as
 - staff kitchen areas in shops, offices and other working environments;
 - farm houses and by clients in hotels, motels and other residential type environments;
 - bed and breakfast type environments;
 - catering and similar non-retail applications.
- When disposing your appliance, please choose an authorized disposal site.

➤ **Installation of Your Wine Cooler**

- This appliance is designed to be for built-in (fully recessed) (Refer to sticker location the back of this appliance).
- **This appliance is intended to be used exclusively for the storage of wine.**
- Place your Wine cooler on a floor that is strong enough to support it when it is fully loaded. To level your Wine cooler, adjust the front leveling leg at the bottom of the Wine cooler.
- This appliance is using flammability refrigerant. So never damage the cooling pipe work during the transportation. Locate the Wine cooler away from direct sunlight and sources of heat (stove, heater, radiator, etc.). Direct sunlight may affect the acrylic coating and heat sources may increase electrical consumption. Extreme cold ambient temperatures may also cause the unit not to perform properly.
- Avoid locating the unit in moist areas.
- Plug the Wine cooler into an exclusive, properly installed-grounded wall outlet. Do not under any circumstances cut or remove the third (ground) prong from the power cord. Any questions concerning power and/or grounding should be directed toward a certified electrician or an authorized Products service center.

➤ **Attention**

- Store wine in sealed bottles;
- Do not overload the cabinet;
- Do not open the door unless necessary;
- Do not cover shelves with aluminum foil or any other shelf material which may prevent air circulation;
- Should the Wine cooler be stored without use for long periods it is suggested, after a careful cleaning, to leave the door ajar to allow air to circulate inside the cabinet in order to avoid possible formations of condensation, mold or odors.

➤ **Ambient Room Temperature Limits**

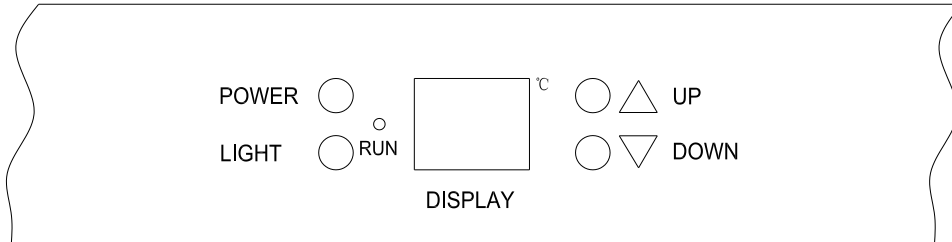
This appliance is designed to operate in ambient temperatures specified by its temperature class marked on the rating plate.

Class	Symbol	Ambient Temperatures range(°C)
Extended Temperate	SN	+ 10 to + 32
Temperate	N	+ 16 to + 32
Subtropical	ST	+ 16 to + 38
Tropical	T	+ 16 to + 43

OPERATING YOUR WINE COOLER AND SETTING THE TEMPERATURE CONTROL

FOR DAB-48.125B/DAB-48.125SS

➤ **Control System Instruction**

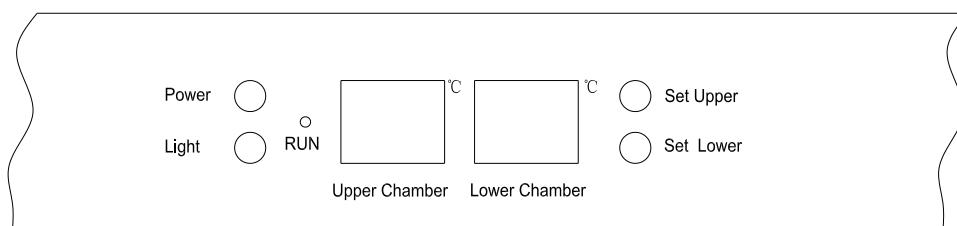


- “ LIGHT ”
To control the inner light turn on/off.
- “ RUN ”
Indicator light illuminates to signify the cooling mode is currently in operation.
- “ POWER ”
To control this appliance turn on/off.
- “UP” BUTTON
Press once the “UP” button, the temperature will raise 1 °C.
- “DOWN” BUTTON
Press once the “DOWN” button, the temperature will lower 1 °C.
- “DISPLAY”
To shows the set temperature .

➤ **Setting The Temperature Controls**

- The temperature setting can be adjusted from 5°C to 18°C
- The temperature preset at the factory is 12°C
- When the system enter the set up temperature. Each press once the UP or DOWN button, the temperature setting will increase or lower 1°C, When the temperature setting reach the upper limit 18°C and lower limit 5°C, the temperature setting will not increase or lower.
- If you want to reveal every indoor actual temperature, please press and hold the " UP " or " DOWN " button for 5 seconds, the LED will flash and display the actual temperature. After stopping pressing the button for 5 seconds, LED figure will stop flash, then revert back to display the set temperature.
- Flashing LED = Cabinet Temperature
- Steady LED = Set Temperature

FOR DAB-42.117DB/DAB-42.117DSS



- “Light ”
Control the interior light ON/OFF.
- “RUN ”
Indicator light illuminates to signify the cooling mode is currently in operation.
- “Power ”
To control this appliance turn on/off.
- “Set Upper” Button
To set the temperature of the upper chamber.
- “Set Lower” Button
To set the temperature of the lower chamber.
- “Upper Chamber”
Display the set temperature in upper compartment.
- “Lower Chamber”
Display the set temperature in lower compartment.

➤ Setting The Temperature Controls

- The temperature setting range as below:
Upper compartment: 5~10°C
Lower compartment: 10~18°C
- The acquiescence temperature as below:
Upper compartment: 5 °C
Lower compartment: 10°C
- When the system will be entering the set up temperature. Each press once the “Set Upper ” button,
the temperature setting of the upper zone will increase 1°C, When the temperature setting reach the upper limit 10°C, the temperature will return 5°C. Each press once the “Set Lower ” button,
the
temperature setting of the lower zone will lower 1°C ,When the temperature setting reach the upper limit 18°C, the temperature will return 10°C.
- If you want to reveal every indoor actual temperature, please press and hold the " Set Upper " or " Set Lower " button for 5 seconds, the LED will flash and display the actual temperature. After stopping pressing the button for 5 seconds, LED figure will stop flash, then revert back to display the set temperature.
- **Flashing word**= Cooler Temperature
Steady word = Set Temperature

➤ **Internal light**

In order to reduce energy consumption, the LED light within this wine cabinet will automatically switch off when closed the door. If you would prefer the LED light to remain on continuously, this is possible. Please press and hold the “LIGHT” button for 5 seconds, the display will show “LP”. After 4 seconds the display will revert back to normal and the light will remain on until manually switched off.

If you would like to revert back and conserve energy (recommended), press and hold the “LIGHT” button for 5 seconds, the display will show “LF”. After 4 seconds the display will revert back to normal, and the light will automatically switch off after 10 minutes

➤ **Note**

- If the unit is unplugged, power lost, or turned off, you must wait 3 to 5 minutes before restarting the unit. If you attempt to restart before this time delay, the Wine cooler will not start.
- When you use the Wine cooler for the first time or restart the Wine cooler after having been shut off for a long time, there could be a few degrees variance between the temperature you select and the one indicated on the LED readout. This is normal and it is due to the length of the activation time. Once the Wine cooler is running for a few hours everything will be back to normal.

➤ **Temperature Recollection Function**

In the event of a power interruption, wine cooler can remember the previous temperature settings, and when the power is recovery, the cooler temperature will go back the same setting temperature as power off.

➤ **Overtime Open the Door Alarm**

When you forget close the door or the door is not closed completely, the buzzer alarm after 5 minutes. Please close the door completely and avoid the cold energy was lost.

➤ **Temperature Alarm**

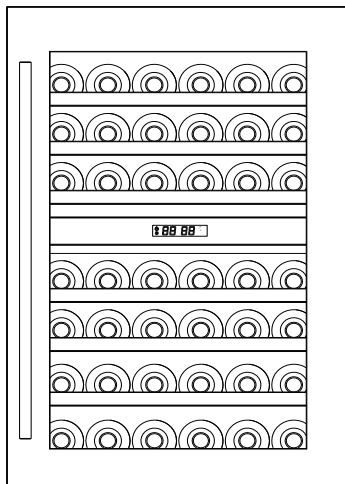
If inner temperature is higher than 23°C, The “HI” is shown in display panel, and the buzzer alarm after one hour continuously. It inform that the inner temperature is too high, please check the reason.

If inner temperature is lower than 0°C, The “LO” is shown in display panel, and the buzzer alarm and the malfunction indicator light light at the same time.

➤ **Storage diagram**

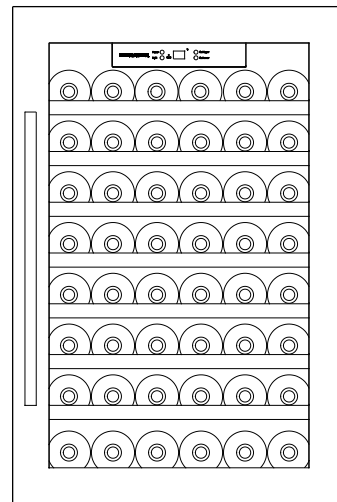
FOR DAB-42.117DB/DAB-42.117DSS

Total: 42 bottles (Max)



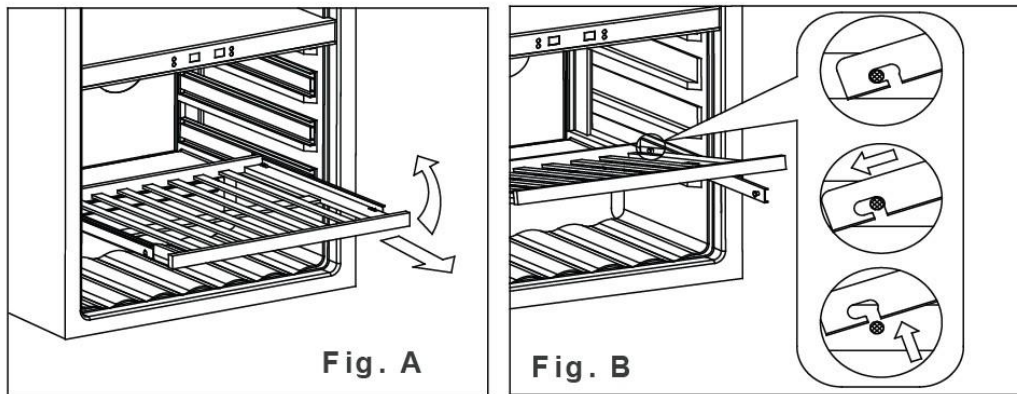
FOR DAB-48.125B/DAB-48.125SS

Total: 48 bottles (Max)



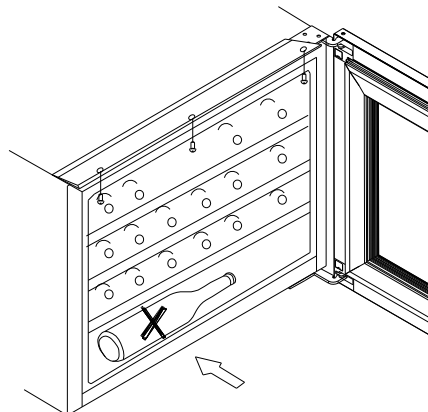
➤ **Shelves**

- To prevent damaging the door gasket, make sure to have the door all the way opened when pulling shelves out of the rail compartment.
- To Remove Shelves:
 1. Fully extend the shelf you wish to remove (Fig. A)
 2. Lift the front of the shelf up (Fig. A)
 3. Holding the shelf track, push the shelf in, then up to release from the rear dampers (Fig. B)



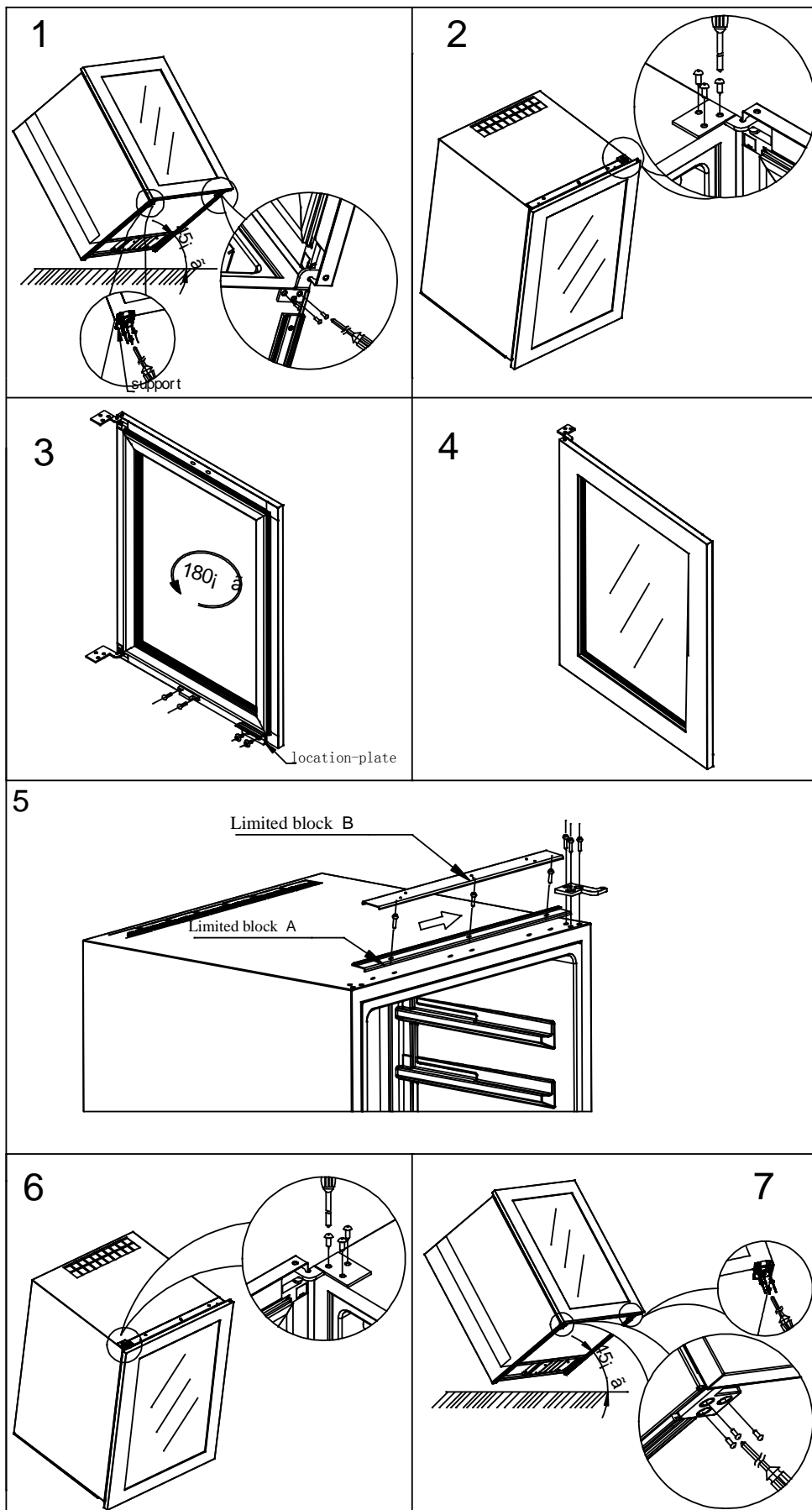
CAUTION!

Do not store bottles crossway on the interior floor! Otherwise, bottles may fall out when the appliance door is opened and this may cause injury or material damage.



➤ **How to change the door opening**

The door can be changed from left and right side. No special requirement, all the door is opened from left side. If require to open from right side please refer to the following direction:



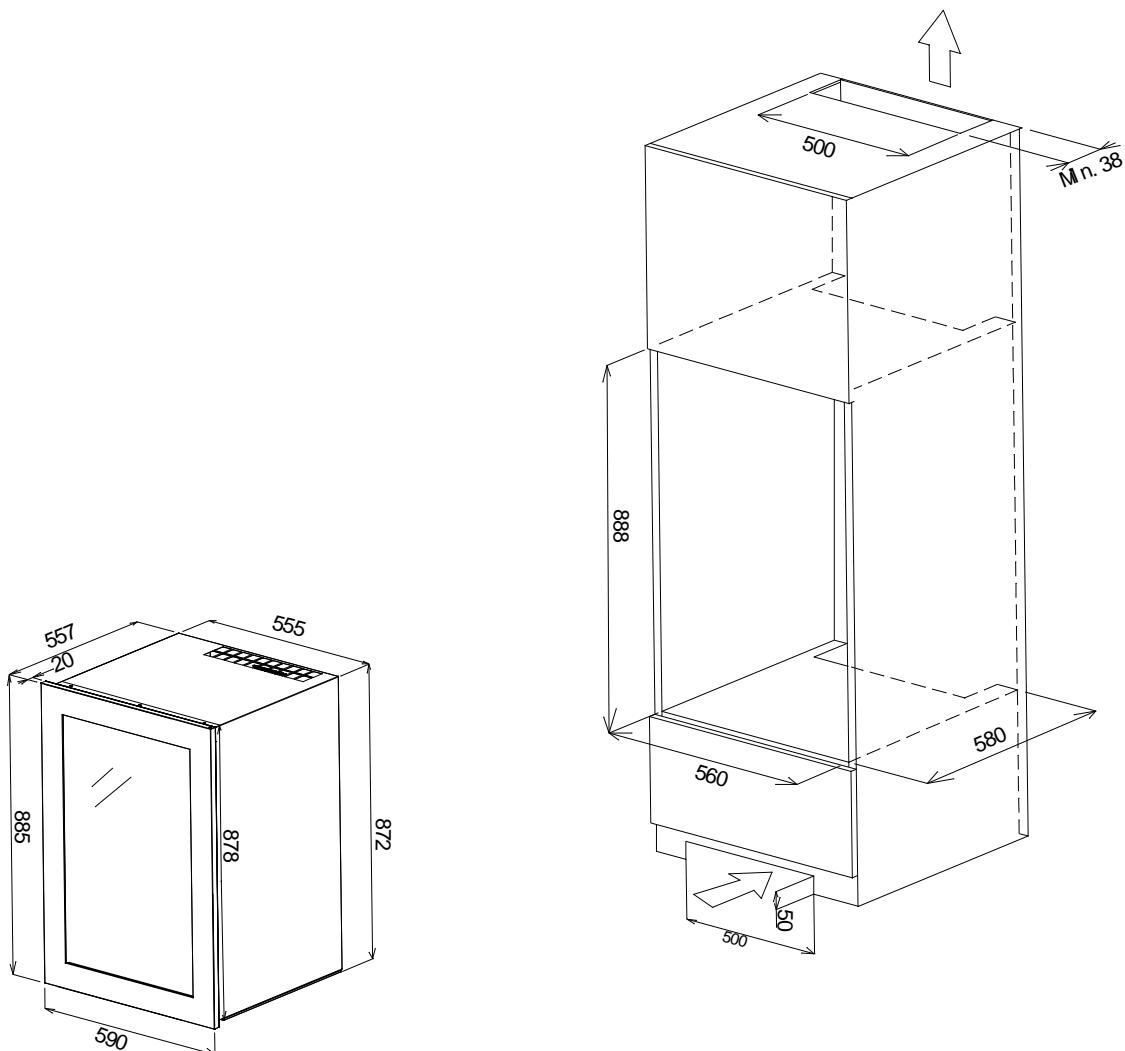
1. Incline the wine cooler with 45 degrees, take out right lower hinge's screws and support's screws with screwdriver(Fig.1)

2. Level the wine cooler Hold the door and take out right upper hinge's screws with screwdriver, then take out the door, put the door safety, unscrew 2 screws at bottom and remove the Reed switch, then install at top of frame, and take out the location-plate's screws and fix location-plate on the other side ,and rotate door at 180 degree (Fig.2 & Fig.3 & Fig.4)

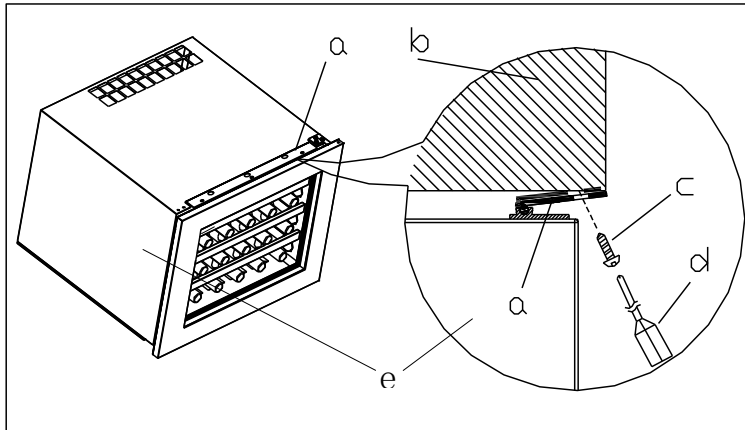
3. Remove limited block B as per the arrows in picture, then release all the screws on limited block A, and take away limited block A.

Install the limited block A at the right side with screws, then install limited block B, then fit the door with screws ,then fix the support on the lower right side. (see Fig.5& Fig.6& Fig.7)

➤ **Installation specifications for built-in purposes**



1. After installed wine cooler into kitchen cabinet, please adjust limited block (a) close to kitchen cabinet (b),
2. Please fix the 3 pcs screws through the limited block (a) screw hold into kitchen cabinet (b), please find below picture for reference.



a、 Limited block b、 Kitchen cabinet c、 Screw d、 Screwdriver e、 Wine cooler

CARE AND MAINTENANCE

➤ Cleaning Your Wine cooler

- Turn off the power, unplug the appliance, and remove all items including shelves and rack.
- Wash the inside surfaces with a warm water and baking soda solution. The solution should be about 2 tablespoons of baking soda to a quart of water.
- Wash the shelves with a mild detergent solution.
- Wring excess water out of the sponge or cloth when cleaning area of the controls, or any electrical parts.
- Wash the outside cooler with warm water and mild liquid detergent. Rinse well and wipe dry with a clean soft cloth.

➤ Power Failure

- Most power failures are corrected within a few hours and should not affect the temperature of your appliance if you minimize the number of times the door is opened. If the power is going to be off for a longer period of time, you need to take the proper steps to protect your contents.

➤ Vacation Time

- **Short vacations:** Leave the Wine cooler operating during vacations of less than three weeks.
- **Long vacations:** If the appliance will not be used for several months, remove all items and turn off the appliance. Clean and dry the interior thoroughly. To prevent odor and mold growth, leave the door open slightly: blocking it open if necessary.

➤ Moving Your Wine cooler

- Remove all items.
- Securely tape down all loose items (shelves) inside your appliance.
- Turn the adjustable leg up to the base to avoid damage.
- Tape the door shut.
- Be sure the appliance stays secure in the upright position during transportation. Also protect outside of appliance with a blanket, or similar item.

➤ Energy Saving Tips

- The Wine cooler should be located in the coolest area of the room, away from heat producing appliances, and out of the direct sunlight.

PROBLEMS WITH YOUR WINE COOLER?


You can solve many common Wine cooler problems easily, saving you the cost of a possible service call. Try the suggestions below to see if you can solve the problem before calling the servicer.

TROUBLESHOOTING GUIDE

PROBLEM	POSSIBLE CAUSE
Wine cooler does not operate.	Not plugged in. The appliance is turned off. The circuit breaker tripped or a blown fuse.
Wine cooler is not cold enough.	Check the temperature control setting. External environment may require a higher setting. The door is opened too often. The door is not closed completely. The door gasket does not seal properly.
Turns on and off frequently.	The room temperature is hotter than normal. A large amount of contents has been added to the Wine cooler. The door is opened too often. The door is not closed completely. The temperature control is not set correctly. The door gasket does not seal properly.
The light does not work.	Not plugged in. The circuit breaker tripped or a blown fuse. The bulb has burned out. The light button is "OFF".
Vibrations.	Check to assure that the Wine cooler is level.
The Wine cooler seems to make too much noise.	The rattling noise may come from the flow of the refrigerant, which is normal. As each cycle ends, you may hear gurgling sounds caused by the flow of refrigerant in your Wine cooler. Contraction and expansion of the inside walls may cause popping and crackling noises. The Wine cooler is not level.
The door will not close properly.	The Wine cooler is not level. The door was reversed and not properly installed. The gasket is dirty. The shelves are out of position.

Before disposal of the appliance.

1. Disconnect the main plug from the main socket.
2. Cut off the main cable and discard it.

	Correct disposal of this product
	<p>This symbol on the product, or in its packaging, indicates that this product may not be treated as household waste. Instead, it should be taken to the appropriate waste collection point for the recycling of electrical and electronic equipment. By ensuring this product is disposed of correctly, you will help prevent potential negative consequences for the environment and human health, which could otherwise be caused by the inappropriate waste handling of this product. For more detailed information about the recycling of this product, please contact your local council, your household waste disposal service, or the shop where you purchased the product.</p>